

# HILLTOP PARK

Designed by Heather Jones  
[www.heatherjonesstudio.com](http://www.heatherjonesstudio.com)

Featuring

Conservatory  
heather jones | studio



Finished quilt measures: 57" x 57"

**Pattern Level: Enthusiastic Novice**

"I am a total beginner and want to learn more!"

ROBERT KAUFMAN  
F A B R I C S

For questions about this pattern, please email [Patterns@RobertKaufman.com](mailto:Patterns@RobertKaufman.com).

# Fabric and Supplies Needed

Fabric amounts based on yardage that is 42" wide.

Color	Fabric	Name/SKU	Yardage	Color	Fabric	Name/SKU	Yardage
	A	CCCS-14193-62 INDIGO <i>* includes binding</i>	2-2/3 yards			AHN-16641-238 GARDEN	
	B	CHS-577-42 Conservatory Charm Square Pack, containing:	4 packs			AHN-16644-38 CHARTREUSE	
		AHN-16642-239 SORBET				AHN-16640-238 GARDEN	
		AHN-16639-239 SORBET				AHN-16639-238 GARDEN	
		AHN-16644-239 SORBET				AHN-16644-238 GARDEN	
		AHN-16643-239 SORBET				AHN-16643-366 ICE FRAPPE	
		AHN-16644-24 PLUM				AHN-16641-366 ICE FRAPPE	
		AHN-16640-239 SORBET				AHN-16642-238 GARDEN	
		AHN-16643-9 NAVY				AHN-16644-9 NAVY	
Copyright 2017, Robert Kaufman For individual use only - Not for resale				You will also need: Backing: 3-5/8 yards of 44" wide fabric OR 2 yards of 108" wide backing			



## Notes Before You Begin

- Read through all of the instructions before beginning.
- All of the seam allowances are 1/4" unless otherwise noted.
- Press seam allowances open unless otherwise noted.
- Width of fabric (WOF) is equal to at least 42" wide.
- Right sides together has been abbreviated to RST.
- Remember to measure twice and cut once!
- This pattern will not use all of the charm squares from four packs, but that many are necessary to make the version as shown with the same fabrics duplicated throughout the design.

## Cutting Instructions

From **Fabric A**, cut:

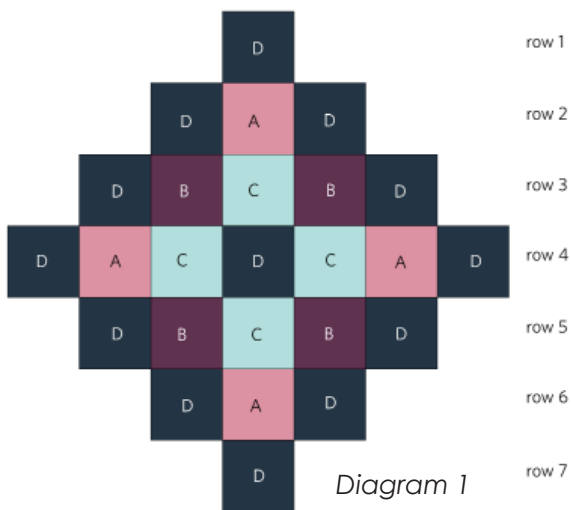
fifteen 5" x WOF strips. Subcut:

one hundred seventeen 5" squares

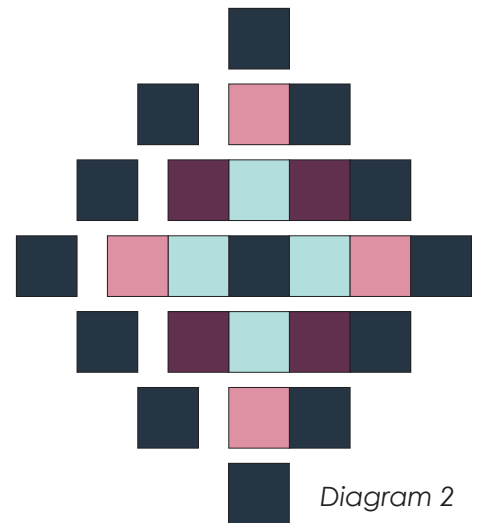
six 2-1/2" x WOF strips for the binding

*Note: this fabric will be referred to as D in the instructions below.*

## Construct the Blocks



1. Choose three different prints from the charm pack sets to use in each block. You will need four charm squares of each of the three different prints (4 A pieces, 4 B pieces, and 4 C pieces) and (13) D (background) pieces for each block.



2. Construct Row 2 of the block by sewing the following pieces in this order, right sides together, and following Diagram 2: D-A-D. Press seams to the side toward the right. Repeat this step to construct Row 6.
3. Construct Row 3 of the block by sewing the following pieces in this order, right sides together, and following Diagram 2: D-B-C-B-D. Press seams to the side toward the left. Repeat this step to construct Row 5.
4. Construct Row 4 of the block by sewing the following pieces in this order, right sides together, and following Diagram 2: D-A-C-D-C-A-D. Press seams to the side toward the right.
5. Sew one D piece to the top of Row 2, following Diagram 2. Press seam to the side.

6. Sew Rows 2, 3, 4, 5, and 6 together, following Diagram 2, and nestling seams where possible. Press seams to the side.
7. Sew one D piece to the bottom of Row 6, following Diagram 2. Press seam to the side.

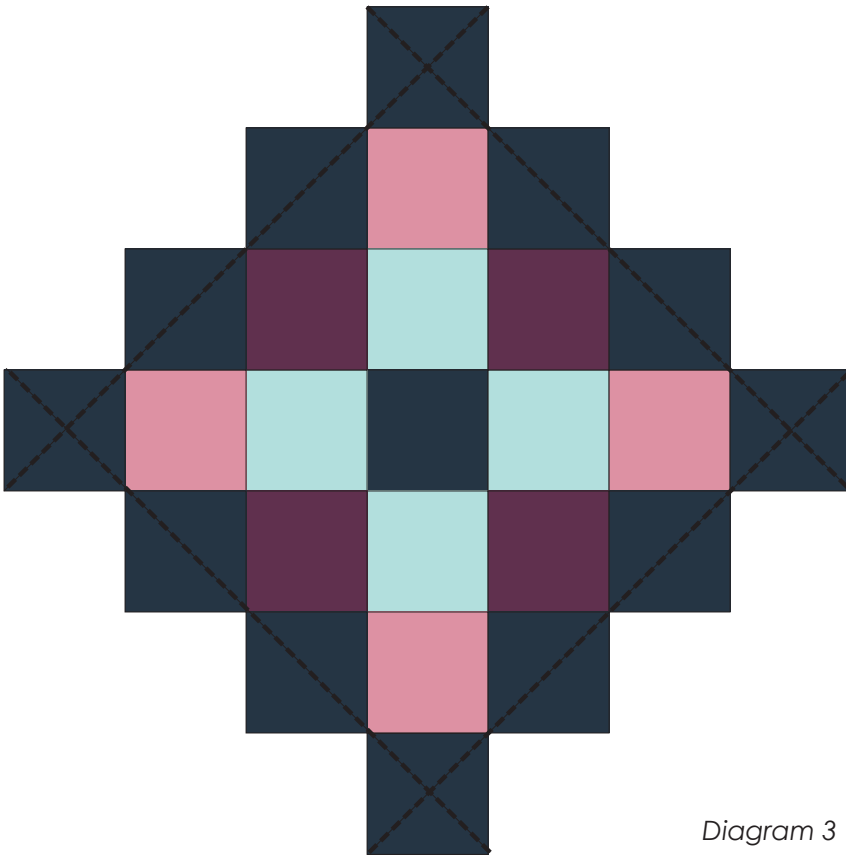


Diagram 3

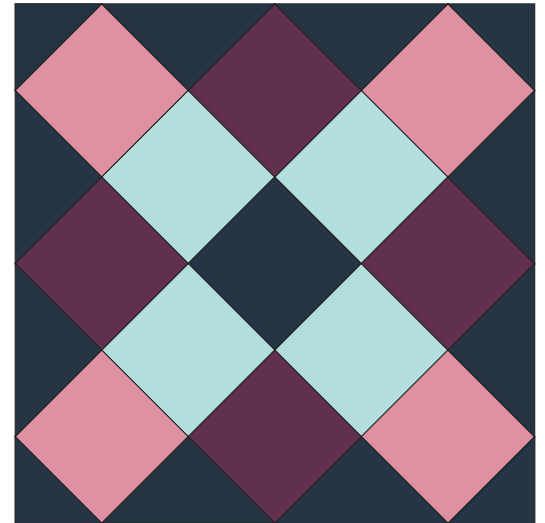
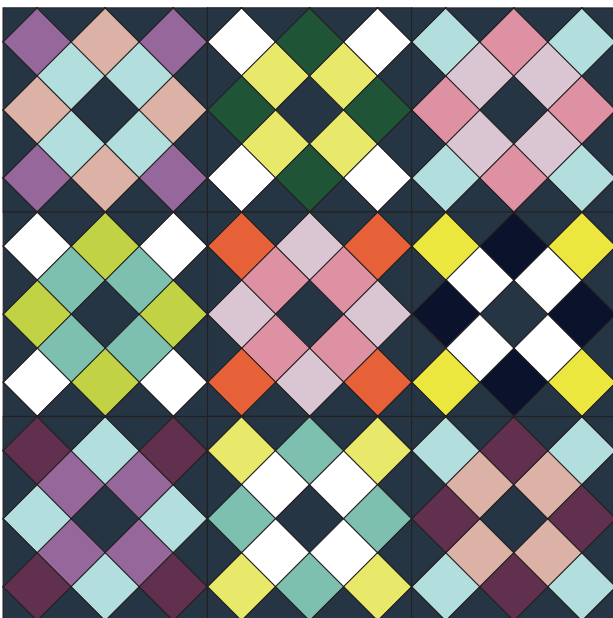


Diagram 4

8. Square up and trim the block with a rotary cutter and straight edge so that it measures 19-1/2" x 19-1/2" and set aside. When the block is trimmed it will look like the illustration in Diagram 4.
9. Repeat Steps 1-8 eight more times to make a total of nine quilt blocks.

## Construct the Quilt Top



10. Arrange the nine blocks to make three rows of three blocks. Pin and sew three blocks together, following the diagram, to construct Row 1. Press seams to the side towards the right.
11. Pin and sew three blocks together, following the diagram, to construct Row 2. Press seams to the side towards the left.
12. Pin and sew three blocks together, following the diagram, to construct Row 3. Press seams to the side towards the right.
13. Pin and sew the three rows together, following the diagram, nestling the seams where possible, to finish the quilt top.

Your quilt top is complete! Baste, quilt, bind and enjoy!