

# GOODIE SACK

Designed by Robert Kaufman Fabrics  
[www.robertkaufman.com](http://www.robertkaufman.com)

Featuring **PUMPKIN FUN**  
Ann Kelle



Option 1



Option 2



Option 3



Option 4

Each finished project measures: 22" x 14" x 5-1/2"  
See page 2 for fabric options.

**Pattern Level: Enthusiastic Novice**

"I am a total beginner and want to learn more!"

**ROBERTKAUFMAN**  
F A B R I C S

For questions about this pattern, please email [Patterns@RobertKaufman.com](mailto:Patterns@RobertKaufman.com).

## Fabric and Supplies Needed

*Fabric amounts based on yardage that is 42" wide.*

	Color	Fabric Name/SKU	Yardage	Color	Fabric Name/SKU	Yardage
Option 1		A AAK-15724-8 ORANGE	1/2 yard		B EZC-12872-285 EMBER	1/2 yard
Option 2		A AAK-15980-2 BLACK	1/2 yard		B EZC-12873-148 PUMPKIN	1/2 yard
Option 3		A AAK-15979-2 BLACK	1/2 yard		B EZC-12872-282 SPOOKY	1/2 yard
Option 4		A AAK-15981-6 PURPLE	1/2 yard		B EZC-12873-25 EGGPLANT	1/2 yard

Copyright 2016, Robert Kaufman  
For individual use only - Not for resale

## Notes Before You Begin

- Read through all of the instructions before beginning.
- All of the seam allowances are 1/4" unless otherwise noted.
- Press seam allowances open unless otherwise noted.
- Width of fabric (WOF) is equal to at least 42" wide.
- Right sides together has been abbreviated to RST.
- Remember to measure twice and cut once!

## Cutting Instructions

**From each of Fabrics A and B, cut:**

two pattern pieces

*Tip: To fit the pattern on the fabric, fold parallel to the selvedge edge.*



## Assemble the Bag

**Step 1:** Place the outer pieces right sides together, then sew the three straight sides, backstitching at the beginning and end of each side. Repeat with the lining pieces, leaving a 4" opening in the center of the bottom seam for turning. Press the seams open or flat.

**Step 2:** Lay the Outer bag body flat in front of you, with the bottom of the bag closest to you. Fold the sides in toward the center by 3", aligning the fold with the bottom marking on pattern. Repeat for the lining. Sew the folded part down along previous stitching lines, backstitching beginning and end. Repeat for the lining piece.



**Step 3:** Turn outer piece right side out and insert it into the lining, right sides together, so all the parts line up and it looks like an inside out bag. Ensure that the side seams and handle align. Begin sewing at the marked point on the hand and sew down and around, stopping at the the next handle marking. Backstitch at the beginning and end of each seam. You will essentially sew four U-shapes, leaving the tops of the handles unsewn.



**Step 4:** Turn the bag right side out through the opening left in the bottom of the lining. Press all the seams along the top, curved portion of the back, working the seam flat with your fingers and iron. Roll the seam slightly to keep the lining from showing.

**Step 5:** Move the ends of the outer handle out of the way and arrange the ends of the lining handles right sides together and raw edges aligned.



Move the lining aside, and position the outer handle end pieces so they can be right sides together, and sew the tops together. Be sure that you don't twist the fabric. Press the seam open as far as you can. When you place the handle fabrics wrong sides together, it should look like a nice flat bag handle. Repeat for the remaining handle.

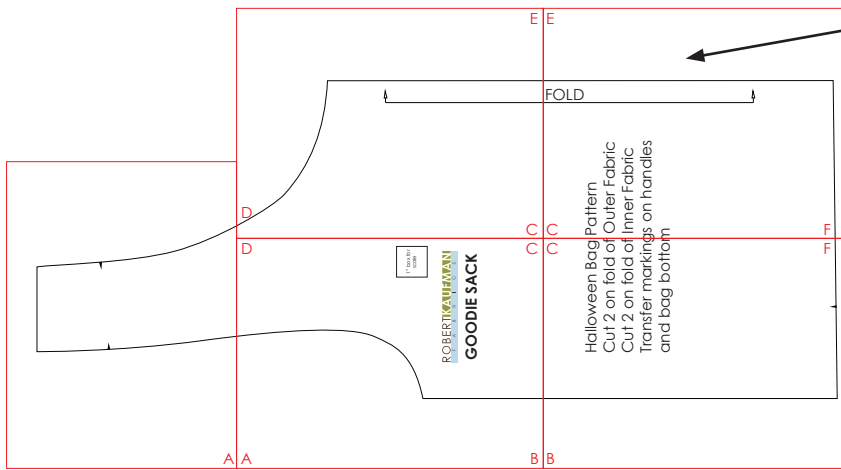


**Step 6:** Press the unsewn seam allowance in, and then topstitch all around the bag handles using a 1/8" seam, backstitching at the beginning and end of each part of the bag.

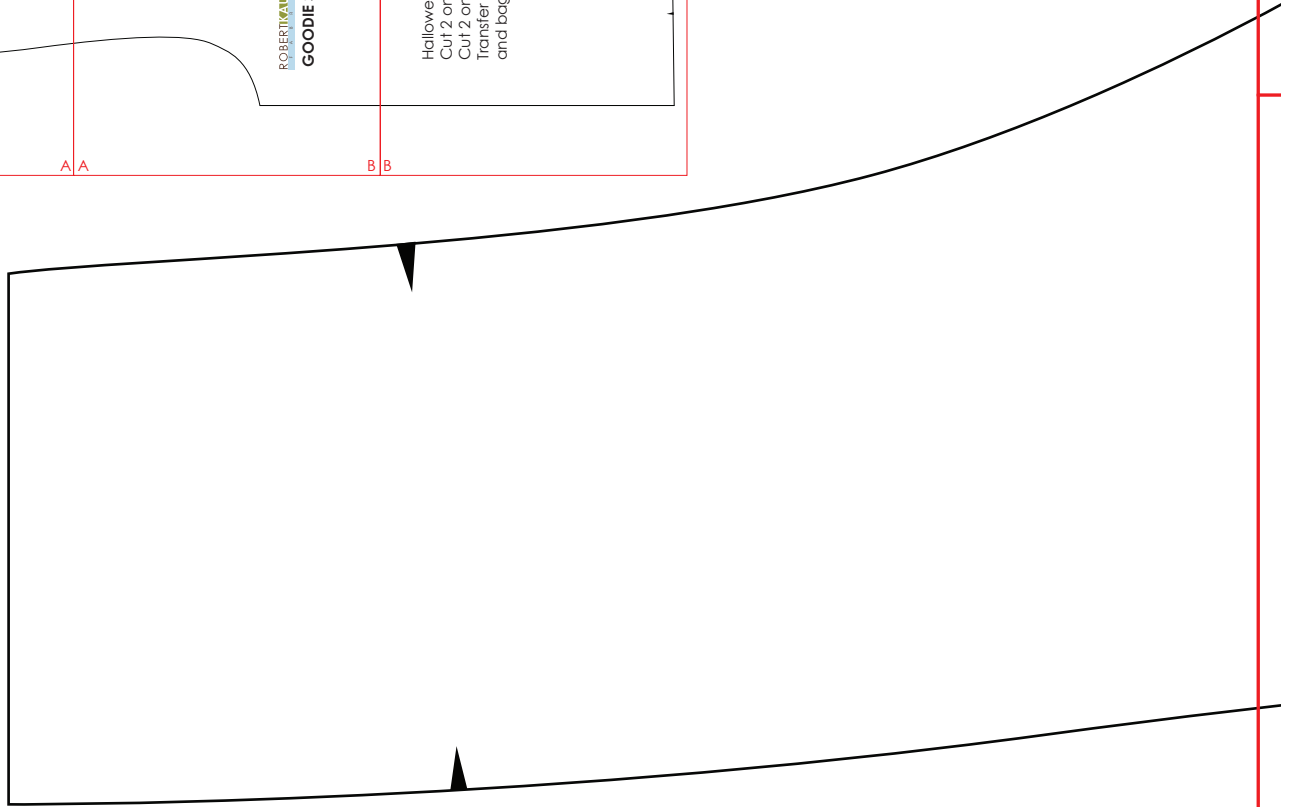


Fill the bag with candy, and enjoy!

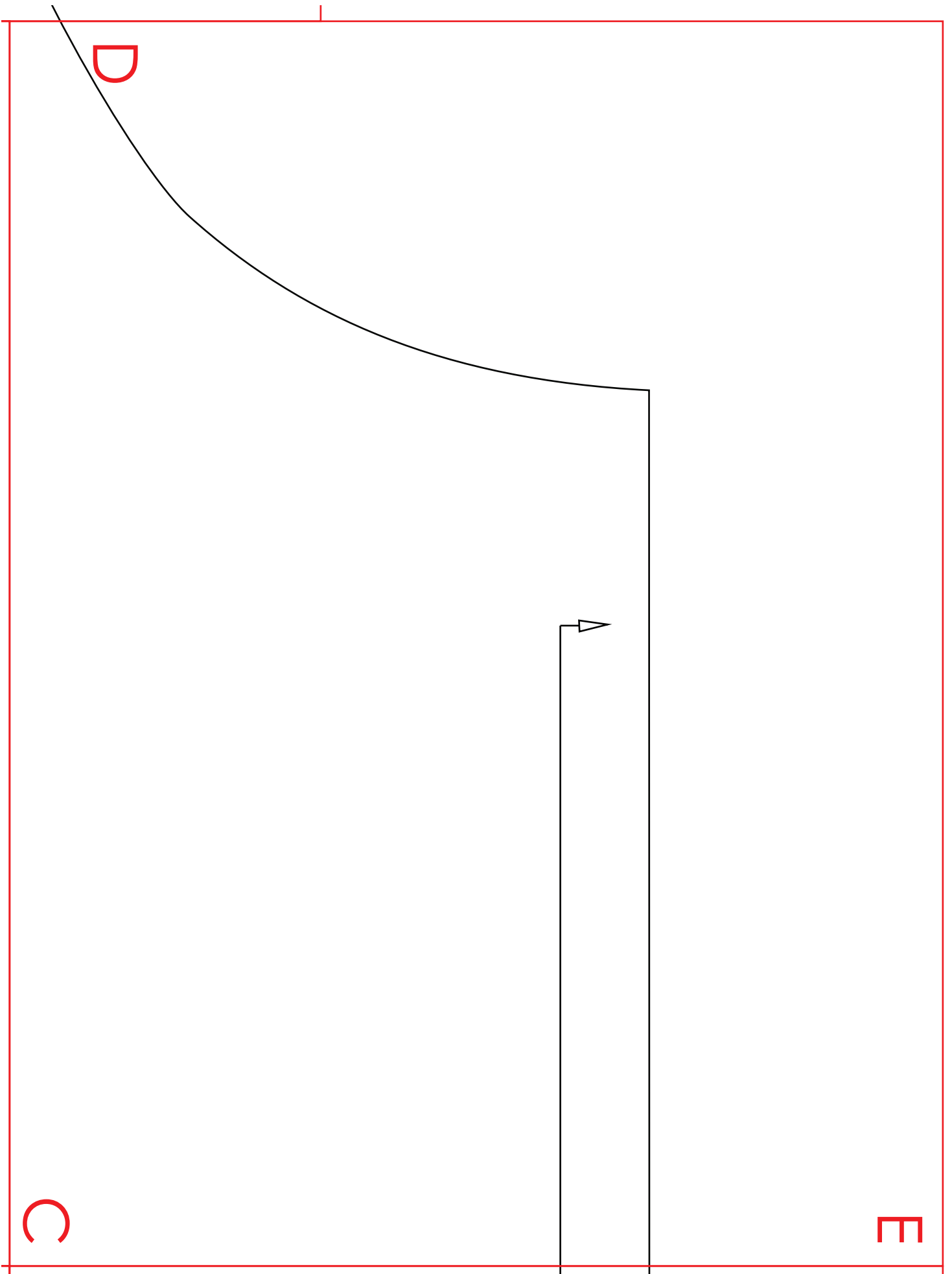
## Pattern Piece



Align and tape the pieces on pages 5-9 together to create one pattern piece as shown to the left.



A



A

D

1" box for  
scale

ROBERT KAUFMAN  
F A B R I C S

**GOODIE SACK**

B

C



g Pattern  
f Outer Fabric  
f Inner Fabric  
gs on handles  
m

FOLD





B



Halloween Bag  
Cut 2 on fold of  
Cut 2 on fold of  
Transfer marking  
and bag bottom

T

