

GAZEBO MEDALLION

Designed by Elise Lea for RK
www.robertkaufman.com

Featuring

ARTISAN BATIKS

Gazebo_{by} Robert Kaufman



Finished quilt measures: 74" x 74"













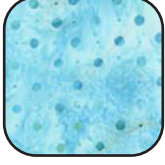




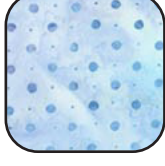
Difficulty Rating: **Advanced**

ROBERT KAUFMAN
F A B R I C S

For questions about this pattern, please email Patterns@RobertKaufman.com.

Fabric and Supplies Needed

Fabric amounts based on yardage that is 44" wide.

Color	Fabric	Name/SKU	Yardage	Color	Fabric	Name/SKU	Yardage
	A	AMD-7000-62 INDIGO	3 yards		J	AMD-17742-55 SWEET PEA	1/4 yard
	B	AMD-16861-213 TEAL	1 yard		K	AMD-17741-70 AQUA	1/8 yard
	C	AMD-17742-213 TEAL	1/4 yard		L	AMD-17741-77 BLUEBERRY	5/8 yard
	D	AMD-16860-213 TEAL	1/3 yard		M	AMD-16859-77 BLUEBERRY	1/3 yard
	E	AMD-16859-213 TEAL	1/4 yard		N	AMD-16859-22 VIOLET	1/2 yard
	F	AMD-17741-213 TEAL	1/8 yard		O	AMD-17742-77 BLUEBERRY	1/3 yard
	G	AMD-16860-55 SWEET PEA	3/8 yard		P	AMD-17741-247 CORNFLOWER	1/4 yard
	H	AMD-17740-55 SWEET PEA	1/2 yard		Q	AMD-17740-247 CORNFLOWER	1/2 yard
	I	AMD-17741-55 SWEET PEA	2/3 yard		R	AMD-16860-247 CORNFLOWER	1/8 yard

Fabric amounts based on yardage that is 44" wide.

Color	Fabric	Name/SKU	Yardage	Color	Fabric	Name/SKU	Yardage
	S	AMD-17742-247 CORNFLOWER	3/8 yard		U	AMD-16861-22 VIOLET	3/8 yard
	T	AMD-16861-247 CORNFLOWER	1/4 yard		Binding*	AMD-7000-62 INDIGO <i>*Also used for Fabric A</i>	5/8 yard
Copyright 2018, Robert Kaufman <i>For individual use only - Not for resale</i>				You will also need: 4-5/8 yards for backing			

Notes Before You Begin

- Read through all of the instructions before beginning.
- All of the seam allowances are 1/4" unless otherwise noted.
- Press seam allowances open unless otherwise noted.
- Width of fabric (WOF) is equal to at least 44" wide.
- Right sides together has been abbreviated to RST.
- Remember to measure twice and cut once!

Cutting Instructions

Tip: Due to the large number of fabrics and pieces cut for this quilt, it is recommended that you cut each fabric and place the pieces in stacks by Border number. Label these stacks and the cutting sizes of each for quick piecing later during construction!

From Fabric A, cut:

two 5-1/4" x WOF strips. Subcut:

sixteen 5-1/4" squares for Border 5 flying geese

one 4" x WOF strip. Subcut:

four 4" squares for the Center Medallion

one 3-1/2" x WOF strip. Subcut:

four 3-1/2" squares for the Center Medallion

four 3-1/2" x 6-1/2" rectangles for the Center Medallion

fourteen 3" x WOF strips. Subcut:

one hundred ninety-two 3" squares for Border 7 flying geese

seventeen 2-1/2" x WOF strips. Subcut:

two 2-1/2" x 20-1/2" strips for Border 2

two 2-1/2" x 24-1/2" strips for Border 2

twenty 2-1/2" x 10-1/2" rectangles for Border 5

sixteen 2-1/2" x 8-1/2" rectangles for Border 5

sixty-four 2-1/2" squares for Border 5

From Fabric B, cut:

one 4-3/4" x WOF strip. Subcut:

one 4-3/4" square for the Center Medallion

Trim the remainder of the strip to 3" wide, then subcut:

four 3" x 5-1/2" rectangles for Border 7 flying geese

Trim the remainder of the strip to 2-5/8" wide, then subcut:

four 2-5/8" squares for Border 3

seven 4" x WOF strips. Sew together, end-to-end, then trim to:

two 4" x 67-1/2" strips for the top/bottoms Border 9

two 4" x 74-1/2" strips for sides of Border 9

From Fabric C, cut:

one 3" x WOF strip. Subcut:

four 3" x 5-1/2" rectangles for Border 7 flying geese

one 2-3/8" x WOF strip. Subcut:

eight 2-3/8" squares for Border 3. Cut each in half once on the diagonal.

From Fabric D, cut:

one 4" x WOF strip. Subcut:

four 4" squares for the Center Medallion

Trim the remainder of the strip to 3" wide, then subcut:

four 3" x 5-1/2" rectangles for Border 7 flying geese

one 2-7/8" x WOF strip. Subcut:

eight 2-7/8" squares for Border 5. Cut each in half once on the diagonal.

one 2-3/8" x WOF strip. Subcut:

eight 2-3/8" squares for Border 3. Cut each in half once on the diagonal.

From Fabric E, cut:

one 3" x WOF strip. Subcut:

four 3" x 5-1/2" rectangles for Border 7 flying geese

one 2-7/8" x WOF strip. Subcut:

eight 2-7/8" squares for Border 5. Cut each in half once on the diagonal.

Trim the remainder of the strip to 2-5/8" wide, then subcut:

four 2-5/8" squares for Border 3

From Fabric F, cut:

one 3" x WOF strip. Subcut:

four 3" x 5-1/2" rectangles for Border 7 flying geese

Trim the remainder of the second strip to 2-5/8" wide, then subcut:

four 2-5/8" squares for Border 3

From Fabric G, cut:

one 3" x WOF strip. Subcut:

eight 3" x 5-1/2" rectangles for Border 7 flying geese

two 2-7/8" x WOF strips. Subcut:

sixteen 2-7/8" squares for Border 5 flying geese

Trim the remainder of the second strip to 2-3/8" wide, then subcut:

eight 2-3/8" squares for Border 3. Cut each in half once on the diagonal.

From Fabric H, cut:

one 3" x WOF strip. Subcut:

four 3" x 5-1/2" rectangles for Border 7 flying geese

two 2-7/8" x WOF strips. Subcut:

sixteen 2-7/8" squares for Border 5 flying geese

Trim the remainder of the second strip to 2-3/8" wide, then subcut:

eight 2-3/8" squares for Border 3. Cut each in half once on the diagonal.

four 1-1/2" x WOF strips. Sew together, end-to-end, then trim to:

one 1-1/2" x 65-1/2" strips for the top of Border 8

one 1-1/2" x 67-1/2" strips for the right edge of Border 8

From Fabric I, cut:

two 3-1/2" x WOF strips. Subcut:

eight 3-1/2" squares for the Center Medallion

four 3-1/2" x 6-1/2" rectangles for the Center Medallion flying geese

one 4" x WOF strip. Subcut:

two 4" squares for the Center Medallion

Trim the remainder of the strip to 3" wide, then subcut:

four 3" x 5-1/2" for the Border 7 flying geese

one 2-3/8" x WOF strip. Subcut:

eight 2-3/8" squares for Border 3. Cut each in half once on the diagonal.

three 2" x WOF strips. Sew together, end-to-end, then trim to:

one 2" x 52-1/2" strips for the bottom of Border 6

one 2" x 55-1/2" strips for the left edge of Border 6

From Fabric J, cut:

one 3-3/8" x WOF strip. Subcut:

four 3-3/8" squares for Border 5.

one 3" x WOF strip. Subcut:

four 3" x 5-1/2" rectangles for Border 7 flying geese

Trim the remainder of the strip to 2-5/8" wide, then subcut:

four 2-5/8" squares for Border 3.

From Fabric K, cut:

one 3-3/8" x WOF strip. Subcut:

four 3-3/8" squares for Border 5.

Trim the remainder of the strip to 3" wide, then subcut:

four 3" x 5-1/2" rectangles for Border 7 flying geese

From Fabric L, cut:

one 3-3/8" x WOF strip. Subcut:

four 3-3/8" squares for Border 5.

two 3" x WOF strips. Subcut:

eight 3" x 5-1/2" rectangles for Border 7 flying geese

Trim the remainder of the strip to 2-5/8" wide, then subcut:

four 2-5/8" squares for Border 3.

three 2" x WOF strips. Sew together, end-to-end, then trim to:

one 2" x 52-1/2" strips for the top of Border 6

one 2" x 55-1/2" strips for the right edge of Border 6

From Fabric M, cut:

one 3" x WOF strip. Subcut:

four 3" x 5-1/2" rectangles for Border 7 flying geese

one 2-3/8" x WOF strip. Subcut:

eight 2-3/8" squares for Border 3. Cut each in half once on the diagonal.

two 1-1/2" x WOF strips. Trim to:

two 1-1/2" x 20-1/2" strips for the top/bottom of Border 1

two 1-1/2" x 18-1/2" strips for the side edges of Border 1

From Fabric N, cut:

one 3-1/2" x WOF strip. Subcut:

eight 3-1/2" squares for the Center Medallion

two 3" x WOF strips. Subcut:

eight 3" x 5-1/2" rectangles for Border 7 flying geese

one 2-7/8" x WOF strip. Subcut:

eight 2-7/8" squares for Border 5. Cut each in half once on the diagonal.

Trim the remainder of the strip to 2-5/8" wide, then subcut:

four 2-5/8" squares for Border 3.

From Fabric O, cut:

two 3" x WOF strips. Subcut:

eight 3" x 5-1/2" rectangles for Border 7 flying geese

one 2-7/8" x WOF strip. Subcut:

eight 2-7/8" squares for Border 5. Cut each in half once on the diagonal.

Trim the remainder of the strip to 2-5/8" wide, then subcut:

four 2-5/8" squares for Border 3.

From Fabric P, cut:

one 3" x WOF strip. Subcut:

four 3" x 5-1/2" rectangles for Border 7 flying geese

Trim the remainder of the strip to 2-3/8" wide, then subcut:

eight 2-3/8" squares for Border 3. Cut each in half once on the diagonal.

one 3-3/8" x WOF strip. Subcut:

four 3-3/8" squares for Border 5.

From Fabric Q, cut:

one 4" x WOF strip. Subcut:

two 4" squares for the Center Medallion

Trim the remainder of the strip to 3-7/8" wide, then subcut:

two 3-7/8" squares for the Center Medallion. Cut each in half once on the diagonal.

Trim the remainder of the strip to 2-5/8" wide, then subcut:

four 2-5/8" squares for Border 3.

one 3" x WOF strip. Subcut:

four 3" x 5-1/2" rectangles for Border 7 flying geese

four 1-1/2" x WOF strips. Sew together, end-to-end, then trim to:

one 1-1/2" x 65-1/2" strips for the bottom of Border 8

one 1-1/2" x 67-1/2" strips for the left edge of Border 8

From Fabric R, cut:

one 3" x WOF strip. Subcut:

four 3" x 5-1/2" rectangles for Border 7 flying geese

Trim the remainder of the second strip to 2-5/8" wide, then subcut:

four 2-5/8" squares for Border 3

From Fabric S, cut:

one 3" x WOF strip. Subcut:

four 3" x 5-1/2" rectangles for Border 7 flying geese

two 2-7/8" x WOF strips. Subcut:

sixteen 2-7/8" squares for Border 5 flying geese

Trim the remainder of the second strip to 2-3/8" wide, then subcut:

eight 2-3/8" squares for Border 3. Cut each in half once on the diagonal.

From Fabric T, cut:

one 3" x WOF strip. Subcut:

four 3" x 5-1/2" rectangles for Border 7 flying geese

Trim the remainder of the strip to 2-7/8" wide, then subcut:

two 2-7/8" squares for Border 5 flying geese

one 2-7/8" x WOF strips. Subcut:

fourteen 2-7/8" squares for Border 5 flying geese for a total of sixteen from this fabric

From Fabric U, cut:

one 3" x WOF strip. Subcut:

four 3" x 5-1/2" rectangles for Border 7 flying geese

Trim the remainder of the second strip to 2-3/8" wide, then subcut:

eight 2-3/8" squares for Border 3. Cut each in half once on the diagonal.

four 1-1/2" x WOF strips. Then trim to:

two 1-1/2" x 30-1/2" strips for the top/bottom of Border 4

two 1-1/2" x 32-1/2" strips for the side edges of Border 4

From the Binding Fabric, cut:

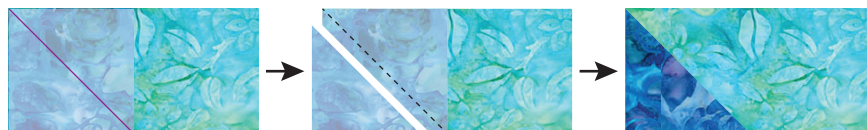
eight 2-1/2" x WOF strips

Assemble the Center Medallion

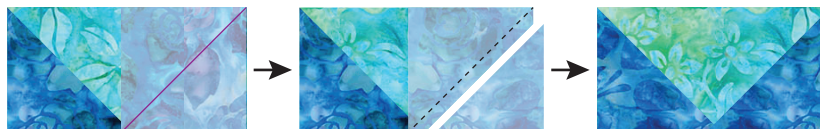
Step 1: Sew a 3-7/8" Fabric Q triangle to opposite sides of a 4-3/4" Fabric B square. Press seam allowances toward the triangles. Repeat on remaining sides of the Fabric B square. Trim the Square-in-a-Square (SIAS) block to 6-1/2" square.



Step 2: Place a 3-1/2" Fabric N square RST at one end of a 3-1/2" x 6-1/2" Fabric I rectangle. Mark a diagonal line on the wrong side of the square, as shown. Sew on the marked line and trim away the excess fabric, leaving a 1/4" seam allowance. Press toward the triangle.

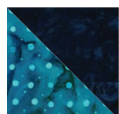


Step 3: Repeat Step 2 at the remaining end of the rectangle. The resulting flying geese block should measure 3-1/2" x 6-1/2".



Repeat to make four like this.

Step 4: Repeat Steps 2 and 3 with eight 3-1/2" Fabric I squares and four 3-1/2" x 6-1/2" Fabric A rectangles to make four flying geese units.



Step 5: Pair a 4" Fabric A square with a 4" Fabric D square, RST. Mark a diagonal line on the wrong side of one square. Sew 1/4" away from both sides of the marked line. Cut on the marked line, creating two half-square triangles (HSTs). Press toward the darker fabric. Trim to 3-1/2" square. Repeat to make eight A/D HSTs.

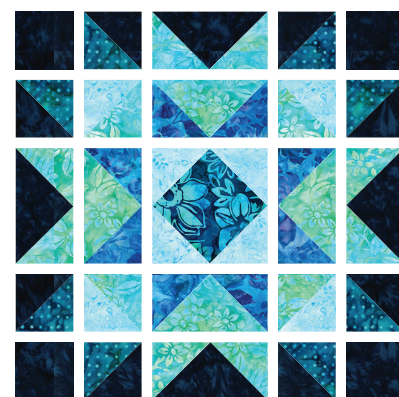


Step 6: Repeat Step 5 with two 4" Fabric Q squares and two 4" Fabric I squares to make four Q/I HSTs, each trimmed to 3-1/2" square.

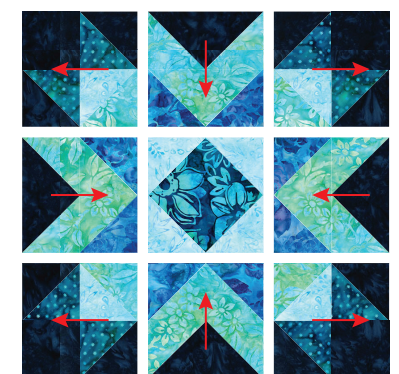
Step 7: Gather:

- one SIAS unit from Step 1
- four N/I flying geese units
- four I/A flying geese units
- eight A/D HSTs
- four Q/I HSTs
- four 3-1/2" Fabric A squares

Arrange as shown, noting the orientation of the flying geese and half-square triangle units.



Step 8: Sew the units together to form a nine-patch unit. Press the seams as indicated by the arrows.



Step 9: Sew the Center Medallion together in three rows of three. Press. The resulting Center Medallion should measure 18-1/2" square.

Assemble Border 1

Step 10: Sew the 1-1/2" x 18-1/2" Fabric M side borders to the quilt center. Press toward the borders. Sew the 1-1/2" x 20-1/2" Fabric M top/bottom borders to the quilt center. Press toward the borders.

Assemble Border 2

Step 11: Sew the 2-1/2" x 20-1/2" Fabric A side borders to the quilt center. Press toward the borders. Sew the 2-1/2" x 24-1/2" Fabric A top/bottom borders to the quilt center. Press toward the borders.

Assemble Border 3

Step 12: Sew a 2-3/8" Fabric U triangle to opposite sides of a 2-5/8" Fabric Q square. Press seam allowances toward the triangles. Repeat on remaining sides of the Fabric Q square. Trim the SIAS block to 3-1/2" square.



Step 13: Repeat Step 12 with all remaining 2-5/8" squares to make a total of thirty-six 3-1/2" SIAS units. Pair the fabrics to your liking or refer to the cover sample, if desired.

Step 14: Sew eight completed Step 13 units together to form a row. Press. Repeat to make a second row. Sew these rows to the left and right edges of the quilt center. Press. Sew ten completed Step 13 units together to form a row. Press. Repeat to make a second row. Sew these rows to the top and bottom edges of the quilt center. Press.

Assemble Border 4



Step 15: Sew the 1-1/2" x 30-1/2" Fabric U side borders to the quilt center. Press toward the borders. Sew the 1-1/2" x 32-1/2" Fabric U top/bottom borders to the quilt center. Press toward the borders.

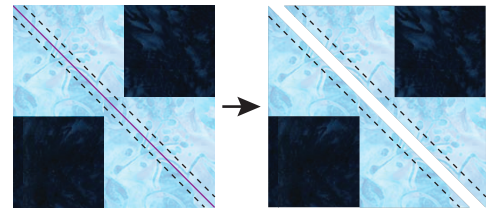
Assemble Border 5

Step 16: Sew a 2-7/8" Fabric D triangle to opposite sides of a 3-3/8" Fabric J square. Press seam allowances toward the triangles. Repeat on remaining sides of the Fabric J square. Trim the SIAS block to 4-1/2" square.



Step 17: Repeat Step 16 with all remaining 3-3/8" squares (Fabrics J, K, L and V) and 2-7/8" triangles to make a total of sixteen 4-1/2" SIAS units. Pair the fabrics to your liking or refer to the cover sample, if desired.

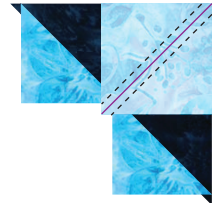
Step 18: Pin two 2-7/8" Fabric T squares in opposing corners of a 5-1/4" Fabric A square, RST. The squares will overlap slightly in the center of the large square. Using a ruler, draw a diagonal line through the squares.



Step 19: Sew scant 1/4" seam on each side of the diagonal line. Set the seam by pressing it flat. Cut along the diagonal line, creating two identical units.

Step 20: Press the fabric toward smaller triangles. Repeat with the second unit.

Step 21: Place one 2-7/8" Fabric T square at the corner of sewn block unit. Draw diagonal line in pencil. Sew a scant 1/4" seam on each side of diagonal line. Set seam (press). Cut along diagonal line, creating two identical units.



Step 22: Press the seam toward smaller triangle. Trim off small dog ears left by the seam allowance. Trim to 2-1/2" x 4-1/2" if necessary. Repeat to make four flying geese blocks.



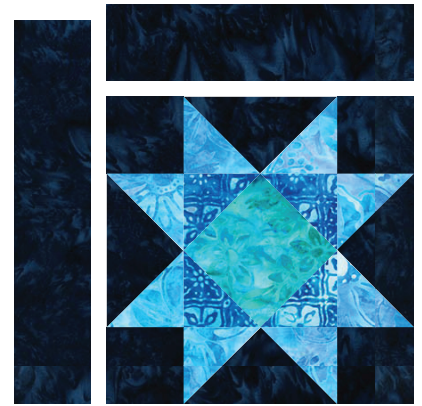
Step 23: Repeat Steps 18-22 with all remaining 5-1/4" Fabric A squares and 2-7/8" squares (Fabrics G, H, S and T) to make a total of sixty-four flying geese blocks.

Step 24: Gather:
one SIAS unit from Step 16
four matching flying geese units from Step 23
four 2-1/2" Fabric A squares

Arrange as shown, noting the orientation of the flying geese. Sew together in three rows of three, pressing the seams away from the flying geese units. The resulting unit should measure 8-1/2" square. Repeat to make sixteen units like this. Pair the fabrics to your liking or refer to the cover sample, if desired.



Step 25: Sew a 2-1/2" x 8-1/2" Fabric A rectangle to the top of each Step 24 unit. Press toward the rectangle. Sew a 2-1/2" x 10-1/2" Fabric A rectangle to the left edge of the unit. Press toward the rectangle. The block should measure 10-1/2" square. Repeat to make sixteen blocks.



Step 26: Sew three completed Step 25 units and one 2-1/2" x 10-1/2" Fabric A rectangle together to form a row, noting the orientation of the blocks in the Quilt Assembly Diagram. Press. Repeat to make a second row. Sew these rows to the left and right edges of the quilt center. Press. Sew five completed Step 25 units and one 2-1/2" x 10-1/2" Fabric A rectangle together to form a row, noting the orientation of the blocks in the Quilt Assembly Diagram. Press. Repeat to make a second row. Sew these rows to the top and bottom edges of the quilt center. Press.

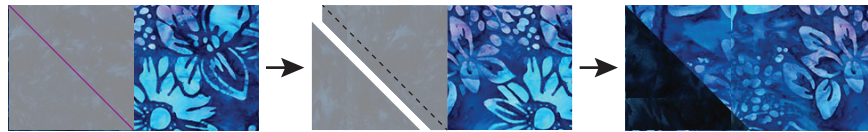


Assemble Border 6

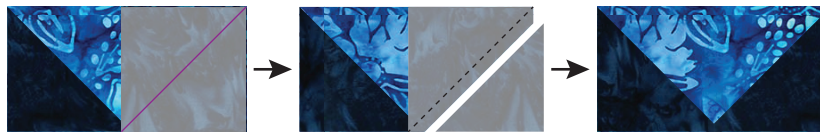
Step 27: Sew the 2" x 52-1/2" Fabric L top border to the quilt center. Sew the 2" x 52-1/2" Fabric I bottom border to the quilt center. Press toward the borders. Sew the 2" x 55-1/2" Fabric L right side border to the quilt center. Sew the 2" x 55-1/2" Fabric I left side border to the quilt center. Press toward the borders.

Assemble Border 7

Step 28: Place a 3" Fabric A square RST at one end of a 3" x 5-1/2" Fabric B rectangle. Mark a diagonal line on the wrong side of the square, as shown. Sew on the marked line and trim away the excess fabric, leaving a 1/4" seam allowance. Press toward the triangle.



Step 29: Repeat Step 28 at the remaining end of the rectangle. The resulting flying geese block should measure 3" x 5-1/2".



Repeat to make four like this.

Step 30: Repeat Steps 28 and 29 with each 3" x 5-1/2" rectangle to make ninety-six flying geese units.

Step 31: Arrange the flying geese units around the quilt center, noting the fabric placement and orientation of the units in the Quilt Assembly Diagram. Gather the twenty-two units that make the top border. Sew together and press. Sew this row to the top of the quilt center. Press. Repeat with the twenty-two units at the bottom of the quilt.

Step 32: Gather the twenty-six units on the left edge of the quilt, noting that the two blocks at the bottom of the column are pointing a different direction. Sew these two blocks together as a pair, then continue to sew the column together. Sew this column to the left edge of the quilt center. Press. Repeat with the right edge, noting the orientation of the two blocks at the top of the column. Press.



Assemble Border 8

Step 33: Sew the 1-1/2" x 65-1/2" Fabric H top border to the quilt center. Sew the 1-1/2" x 65-1/2" Fabric Q bottom border to the quilt center. Press toward the borders. Sew the 1-1/2" x 67-1/2" Fabric H right side border to the quilt center. Sew the 1-1/2" x 67-1/2" Fabric Q left side border to the quilt center. Press toward the borders.

Assemble Border 9

Step 34: Sew the 4" x 67-1/2" Fabric B top/bottom borders to the quilt center. Press toward the borders. Sew the 4" x 74-1/2" Fabric B side borders to the quilt center. Press toward the borders.

Your quilt top is complete! Baste, quilt, bind and enjoy!