

# Gallery

Designed by Robert Kaufman Fabrics

Featuring

*Vincent van Gogh*





Finished quilt measures: 27" x 34"

**Pattern Level: Confident Beginner**

*"I have basic block construction down  
and would like to learn a new trick!"*

**ROBERT KAUFMAN**  
F A B R I C S

## Fabric and Supplies Needed

Color	Fabric	Name/SKU	Yardage	Color	Fabric	Name/SKU	Yardage
	A	AVG-15100-17 IRIS	2/3 yard		B	AVG-15103-169 EARTH	3/8 yard

You will also need:  
1 yard Backing Fabric  
30" x 37" Quilt Batting

## Notes Before You Begin

- Please read through all of the instructions before beginning.
- All of the seam allowances are 1/4" unless otherwise noted.
- Width of fabric (WOF) is equal to at least 42" wide.
- Press all seam allowances open after each seam is sewn, unless otherwise noted.
- Remember to measure twice and cut once!

## Cutting Instructions

### Fabric A

- Fussy-cut around the rectangular "painting" leaving 1/4" of the blue outer line all around. (the rectangle will measure about 23" x 30").

### Fabric B

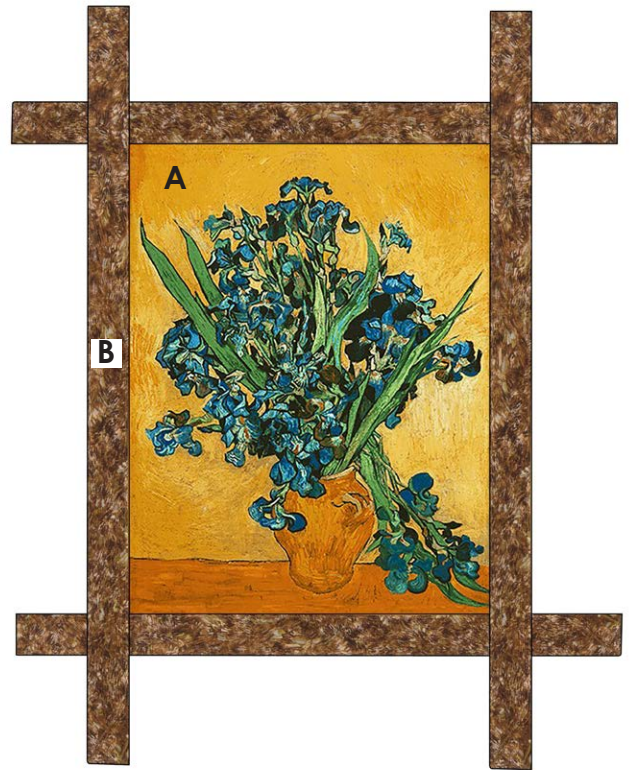
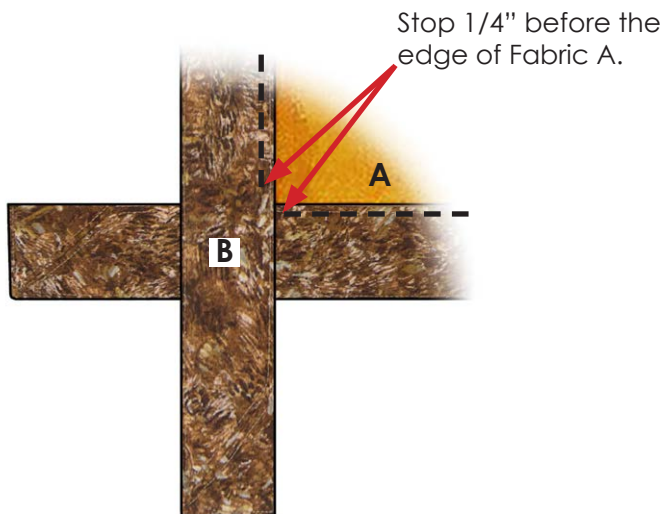
- Cut four strips 3" x WOF



## Assembly Instructions

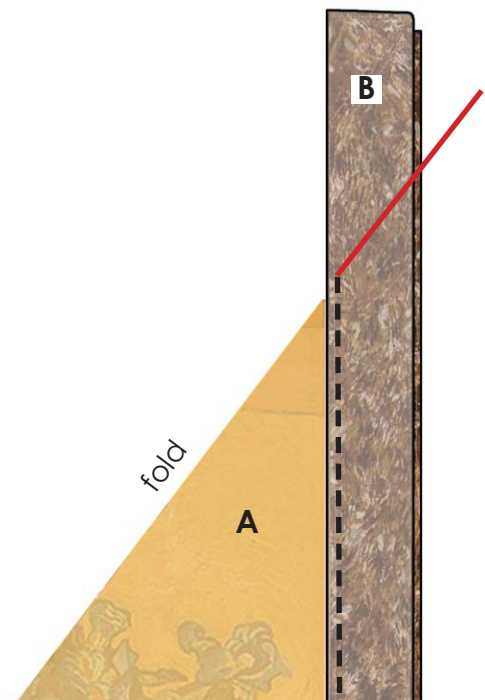
### Step 1: Attach the Borders

- Sew a Fabric B strip to the top and the bottom of the Fabric A rectangle, starting and stopping 1/4" before each corner and backstitching.
- Sew a Fabric B strip to the sides of the Fabric A rectangle, starting and stopping 1/4" before each corner and backstitching.
- Press all seam allowances toward the borders.



### Step 2: Miter the Borders

- Fold the quilt in half diagonally with right sides together. Two perpendicular borders will now be laying with one on top of the other. Align the raw edges.
- With a ruler, mark a line (shown in red) that extends from the diagonal fold to the raw edges of the borders.
- Sew along the marked line, beginning at the original stitching. Trim seam allowance to 1/4".
- Repeat for the other three corners.

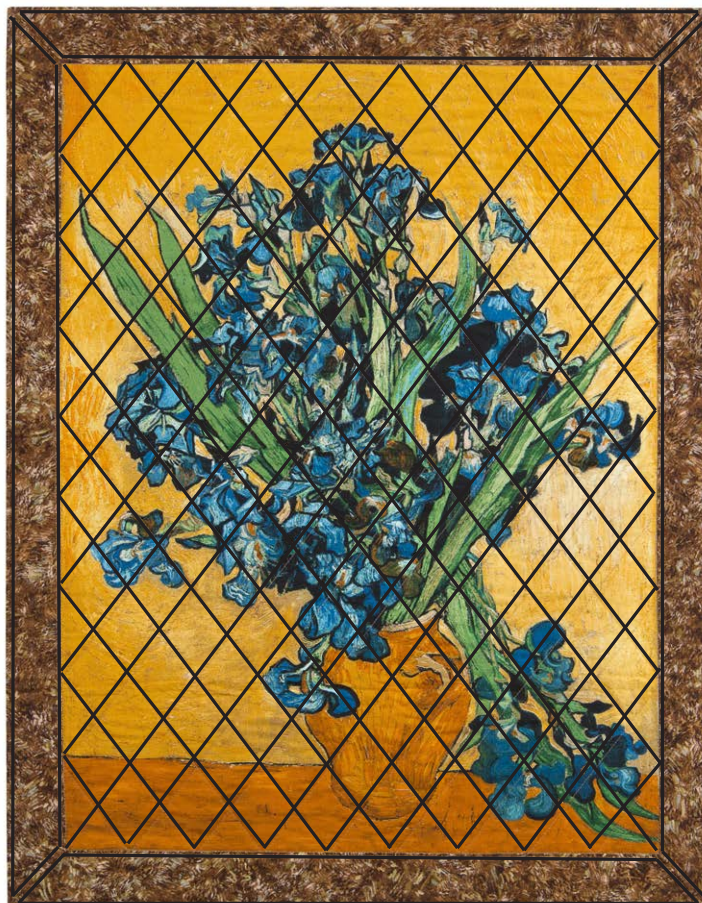


### Step 3: Finishing

- Layer the quilt top and batting and either spray or pin baste together.
- Stitch in the ditch all around the quilt between fabric A and B.
- Sew around the perimeter of the quilt top and batting using a 1/4" seam allowance. Trim the excess batting.
- Cut the backing to be the same size as the quilt top, layer them with right sides together and sew around the perimeter using a 1/2" seam allowance. Leave a 4" opening on the bottom center edge.
- Flip the quilt right side out, push the corners out, and press flat. Fold the raw edges of the opening in and either hand stitch closed, or edge-stitch it closed as you quilt.
- Quilt as desired! You may follow the black lines on the diagram below to quilt it like the sample.



Stitch in the ditch



Your quilt is complete!