

FRENCH PLUMES

Designed by Robert Kaufman Fabrics
www.robertkaufman.com

Featuring Palais Jardin



Finished quilt measures: 64" x 84"

Quilt shown in "ANTIQUE" colorstory. For alternate "PEACOCK" colorstory see page 17.

Pattern Level: Advanced Expert







*"My skills are sharp, so I'm ready to
take on the hard stuff."*

ROBERTKAUFMAN
F A B R I C S

For questions about this pattern, please email Patterns@RobertKaufman.com.

Fabric and Supplies Needed

Fabric amounts based on yardage that is 42" wide.

Color	Fabric	Name/SKU	Yardage	Color	Fabric	Name/SKU	Yardage
	A	ATRM-16940-199 ANTIQUÉ	2/3 yard (one panel)		D	SRKM-16942-15 IVORY	3/4 yard
	B	SRKM-16942-213 TEAL	2-5/8 yards		E	ATRM-16941-199 ANTIQUÉ	1 yard
	C	ATRM-16941-14 NATURAL	1-7/8 yards		Binding*	SRKM-16942-213 TEAL <i>*Also used for Fabric B</i>	5/8 yard
<p>Copyright 2017, Robert Kaufman For individual use only - Not for resale</p>				<p>You will also need: 5-1/4 yards for backing</p>			

Notes Before You Begin

- Read through all of the instructions before beginning.
- All of the seam allowances are 1/4" unless otherwise noted.
- Press seam allowances open unless otherwise noted.
- Width of fabric (WOF) is equal to at least 42" wide.
- Right sides together has been abbreviated to RST.
- Remember to measure twice and cut once!

Cutting Instructions

From Fabric A, fussy cut:

one 20-1/2" x 40-1/2" rectangle for the center panel

From Fabric B, cut:

four 2-1/2" x WOF strips. Sew together, end-to-end, the trim to yield:

two 2-1/2" x 20-1/2" top and bottom 1st borders

two 2-1/2" x 44-1/2" side 1st borders

seven 1-1/2" x WOF strips. Sew together, end-to-end, the trim to yield:

two 1-1/2" x 54" top and bottom 4th borders

two 1-1/2" x 76" side 4th borders

one 5" x WOF strip. Subcut:

twelve 3-1/2" x 5" rectangles. Cut each in half along one diagonal (six from upper left to lower right and six from upper right to lower left), setting aside for Template 7.

two 4-3/4" x WOF strips. Subcut:

twenty-four 3" x 4-3/4" rectangles. Cut each in half along one diagonal (six from upper left to lower right and six from upper right to lower left), setting aside for Template 8.

two 3-3/4" x WOF strips. Subcut:

sixteen 3-3/4" squares. Set aside for the HSTs in the corner pieced border.

two 6-1/2" squares. Cut each square in half along one diagonal for the corner blocks.

six of Template 1

two of Template 2

two of Template 2-Reversed

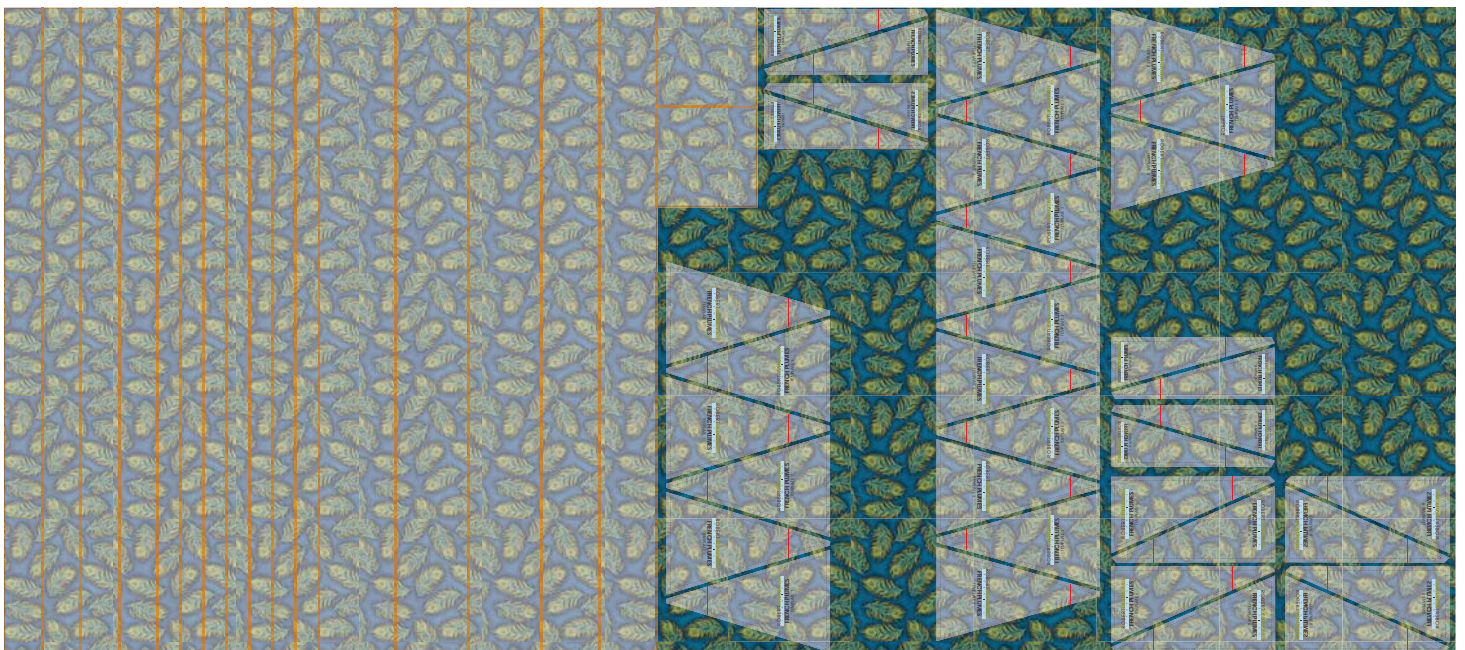
fourteen of Template 3

two of Template 4

two of Template 4-Reversed

four of Template 6

four of Template 6-Reversed



From Fabric C, cut:

one 5" x WOF strip. Subcut:

twelve 3-1/2" x 5" rectangles. Cut each in half along one diagonal (six from upper left to lower right and six from upper right to lower left), setting aside for Template 7.

two 4-3/4" x WOF strips. Subcut:

twenty-four 3" x 4-3/4" rectangles. Cut each in half along one diagonal (six from upper left to lower right and six from upper right to lower left), setting aside for Template 8.

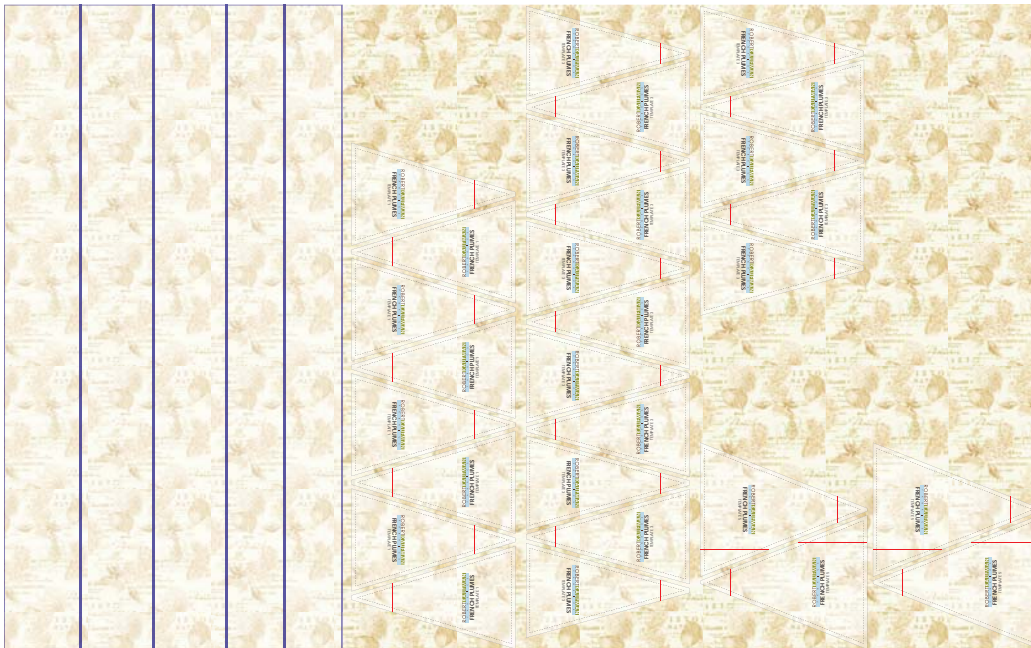
two 3-3/4" x WOF strips. Subcut:

sixteen 3-3/4" squares. Set aside for the HSTs in the corner pieced border.

eight of Template 1

sixteen of Template 3

four of Template 5



From Fabric D, cut:

twelve 1-1/2" x WOF strips. Sew together, end-to-end, then trim to yield:

two 1-1/2" x 44-1/2" top/bottom 2nd borders

two 1-1/2" x 66-1/2" side 2nd borders

two 1-1/2" x 52" top/bottom 3rd borders

two 1-1/2" x 74" side 3rd borders

four 3-1/4" squares

From Fabric E, cut:

seven 4-1/2" x WOF strips. Sew together, end-to-end, then trim to yield:

two 4-1/2" x 56" top/bottom 5th borders

two 4-1/2" x 84" side 5th borders

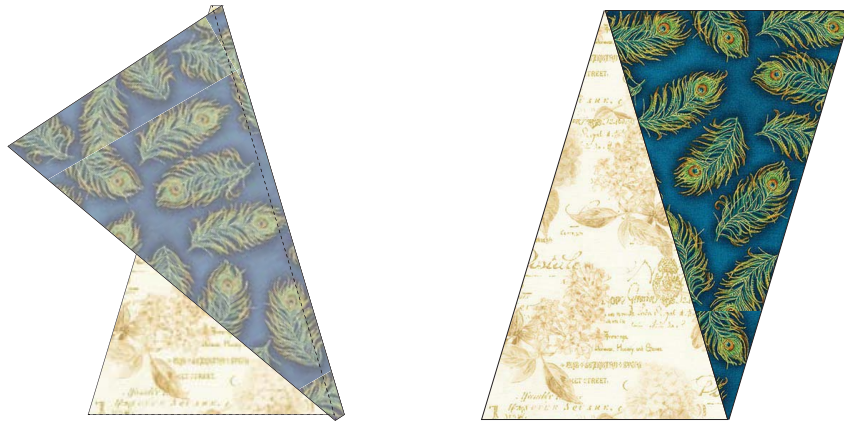
From the binding, cut:

eight 2-1/2" x WOF strips

Assemble the Quilt Center

Step 1: Sew the 20-1/2" Fabric B 1st borders to the top and bottom of the Fabric A center panel. Press toward the borders. Sew the 44-1/2" Fabric B 1st borders to the sides of the Fabric A center panel. Press toward the borders.

Step 2: Sew one Fabric C/Template 1 piece to one Fabric B/Template 1 piece, as shown, using the notches in the templates to properly offset the triangles. Be sure the Fabric B triangle will be on the right edge of the Fabric C triangle. Press toward the darker fabric. Repeat to make six pairs of triangles.



Step 3: Sew three completed Step 2 pairs together, as shown. Press toward the darker fabric. Sew a Fabric C/Template 1 triangle to the remaining long edge of the last Fabric B triangle. Press. Sew one Fabric B/Template 2 and one Fabric B/Template 2-Reversed piece to the left and right edges of the pieced unit. Press toward the Template 2 pieces. This is the top pieced unit. Repeat to make the bottom pieced unit. Units should measure 10-1/2" x 24-1/2".



Step 4: Using the same process as in Steps 2 and 3, sew together:

eight Fabric C/Template 3 pieces

seven Fabric B/Template 3 pieces

one Fabric B/Template 4

one Fabric B/Template 4-Reversed

to form one side unit, as shown. Press toward the darker fabrics. This is one side pieced unit. Repeat to make the second side pieced unit. Units should measure 10-1/2" x 44-1/2".



Step 5: Arrange the following pieces to form one corner pieced unit:

one Fabric C/Template 5 unit

one Fabric B/Template 6 unit

one Fabric B/Template 6-Reversed unit

one Fabric B triangle cut from the 6-1/2" squares

Sew the Template 6 and 6-Reversed units to the long edges of the Fabric C triangle. Press. Sew the 6-1/2" triangle to the remaining edge of the Fabric C piece. Press. This is the corner block. It should measure 10-1/2" square. Repeat to make a total of four corner blocks.





Step 6: Sew a completed Step 4 side pieced unit to the left and right edges of the quilt center. Press toward the quilt center.

Step 7: Sew a completed corner block from Step 5 to the 10-1/2" edges of each completed Step 3 unit. Note the block orientation and fabric placement. Press. Repeat with the remaining Step 3 unit.

Step 8: Sew a completed Step 7 side pieced unit to the top and bottom edges of the quilt center. Note the block orientation and fabric placement. Press toward the quilt center.

Step 9: Sew the 44-1/2" Fabric D top and bottom 2nd borders to the quilt center. Press toward the borders. Sew the 66-1/2" Fabric D side 2nd borders to the sides of the quilt center. Press toward the borders.

Assemble the Pieced Border

Step 10: Pair a 3-3/4" Fabric B square with a 3-3/4" Fabric C square, RST. Mark a diagonal line on the wrong side of one square. Sew 1/4" away from both sides of the marked line. Cut on the marked line, creating two half-square triangles (HSTs). Press toward the darker fabric. Trim to 3-1/4" square. Repeat to make a total of thirty-two B/C HSTs.



Step 11: Sew four B/C HSTs together in a row, as shown. Note the fabric placement and HST orientation. Repeat to make eight rows of four.



The following units are constructed using paper piecing. Sew the pieces in the order indicated on the templates. Shorten your stitch length to aid in the removal of the paper. Trim seam allowances to 1/4" as each new piece is added.

Step 12: Sew six of Template 7, using the 3-1/2" x 5" rectangles and placing the fabric as follows:

- Section 1- Fabric B
- Section 2- Fabric C
- Section 3- Fabric B
- Section 4- Fabric C
- Section 5- Fabric B
- Section 6- Fabric C
- Section 7- Fabric B
- Section 8- Fabric C



Leave the paper backing in place for now.

Step 13: Paying careful attention to the fabric placement and block orientation, sew three completed Step 12 units together. Press. Sew one completed Step 11 unit to each end of the row. Sew a Fabric D square to each end of the row. Press. Remove the paper backing from the templates. This is the top pieced border. Repeat to make the bottom pieced border.



Step 14: Sew twelve of Template 8, using the 3" x 4-3/4" rectangles and placing the fabric as follows:

- Section 1- Fabric B
- Section 2- Fabric C
- Section 3- Fabric B
- Section 4- Fabric C
- Section 5- Fabric B
- Section 6- Fabric C
- Section 7- Fabric B
- Section 8- Fabric C



Leave the paper backing in place for now.

Step 15: Paying careful attention to the fabric placement and block orientation, sew six completed Step 14 units together. Press. Sew one completed Step 11 unit to each end of the row. Remove the paper backing from the templates. This is a side pieced border. Repeat to make the second side pieced border.



Step 16: Sew the side pieced borders from Step 15 to the left and right edges of the quilt, noting the fabric orientation. Press toward the quilt center. Sew the top and bottom pieced borders from Step 13 to the remaining edges of the quilt, noting the fabric orientation. Press toward the quilt center.

Step 17: Sew the 52" Fabric D top and bottom 3rd borders to the quilt center. Press toward the borders. Sew the 74" Fabric D side 3rd borders to the sides of the quilt center. Press toward the borders.

Step 18: Sew the 54" Fabric B top and bottom 4th borders to the quilt center. Press toward the borders. Sew the 76" Fabric B side 4th borders to the sides of the quilt center. Press toward the borders.

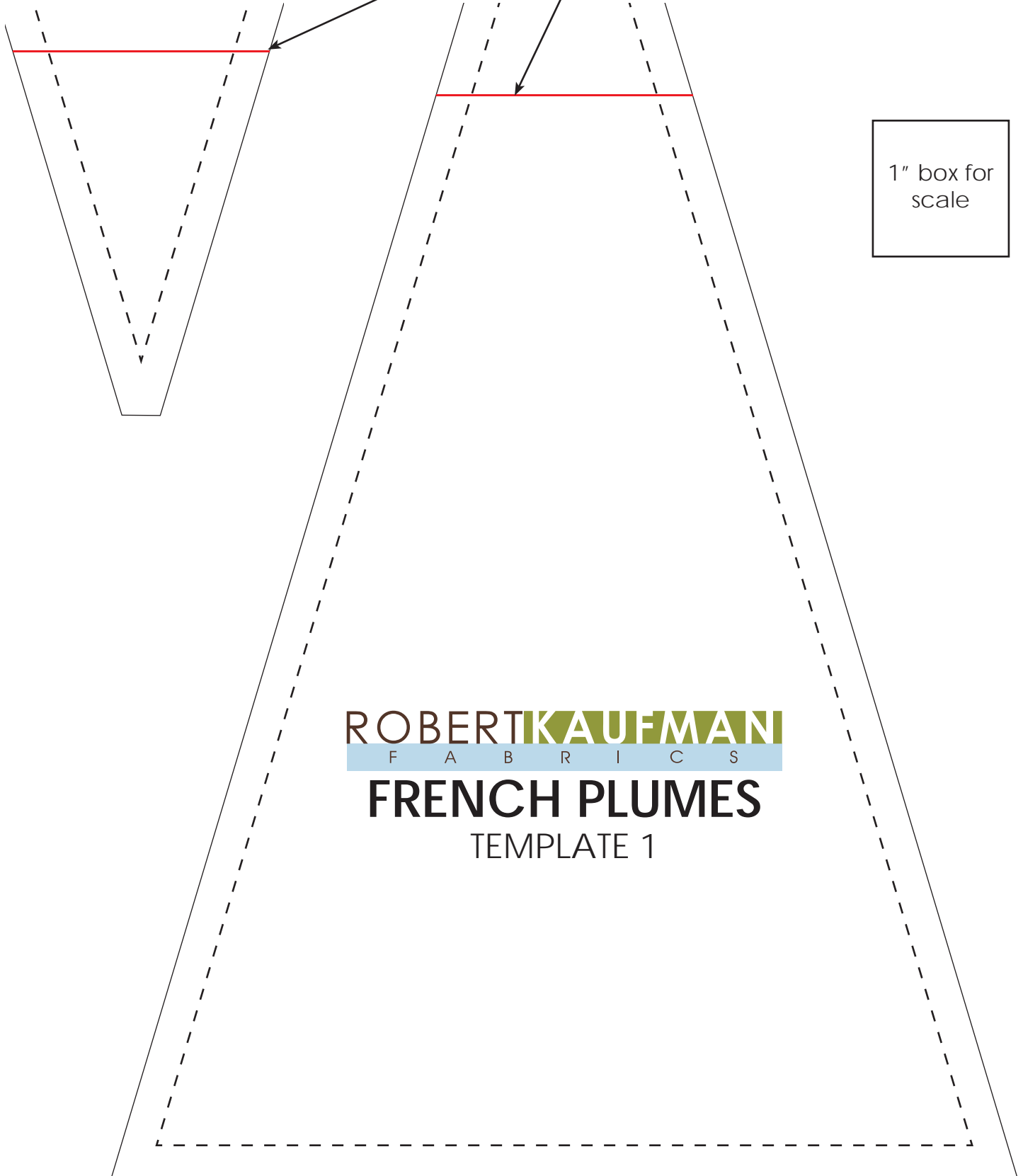
Step 19: Sew the 56" Fabric E top and bottom 5th borders to the quilt center. Press toward the borders. Sew the 84" Fabric E side 5th borders to the sides of the quilt center. Press toward the borders.

Your quilt top is complete! Baste, quilt, bind and enjoy!

Templates

Print at 100%.

Align two parts of Template 1 along red line and tape together.

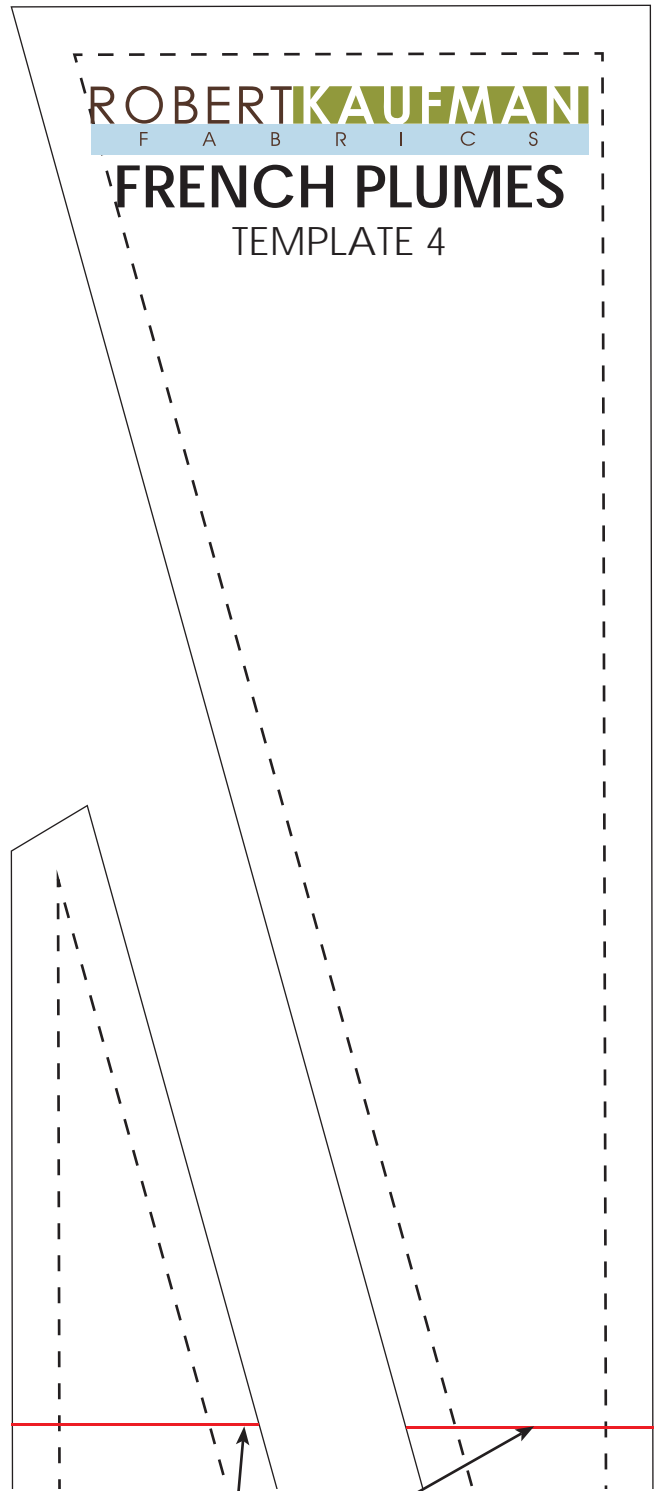
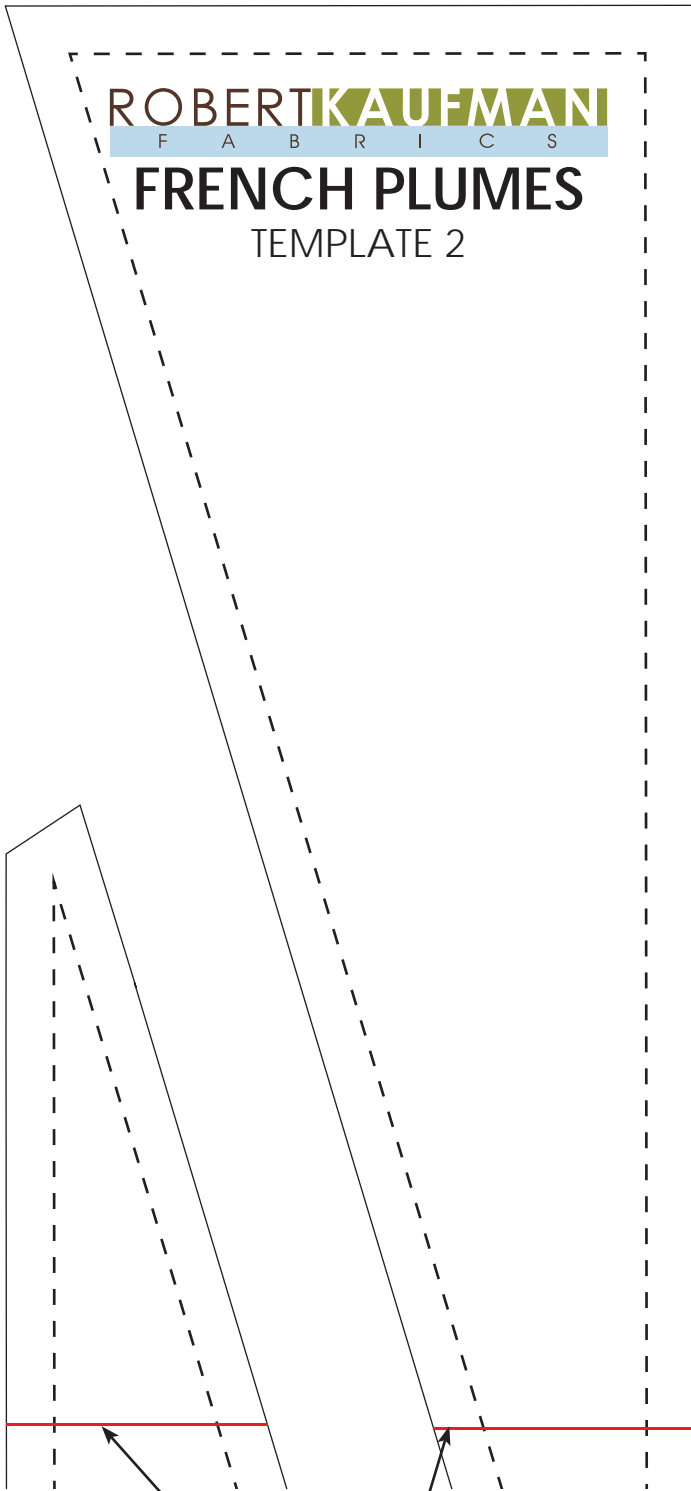


1" box for scale

ROBERT KAUFMAN
F A B R I C S

FRENCH PLUMES

TEMPLATE 1

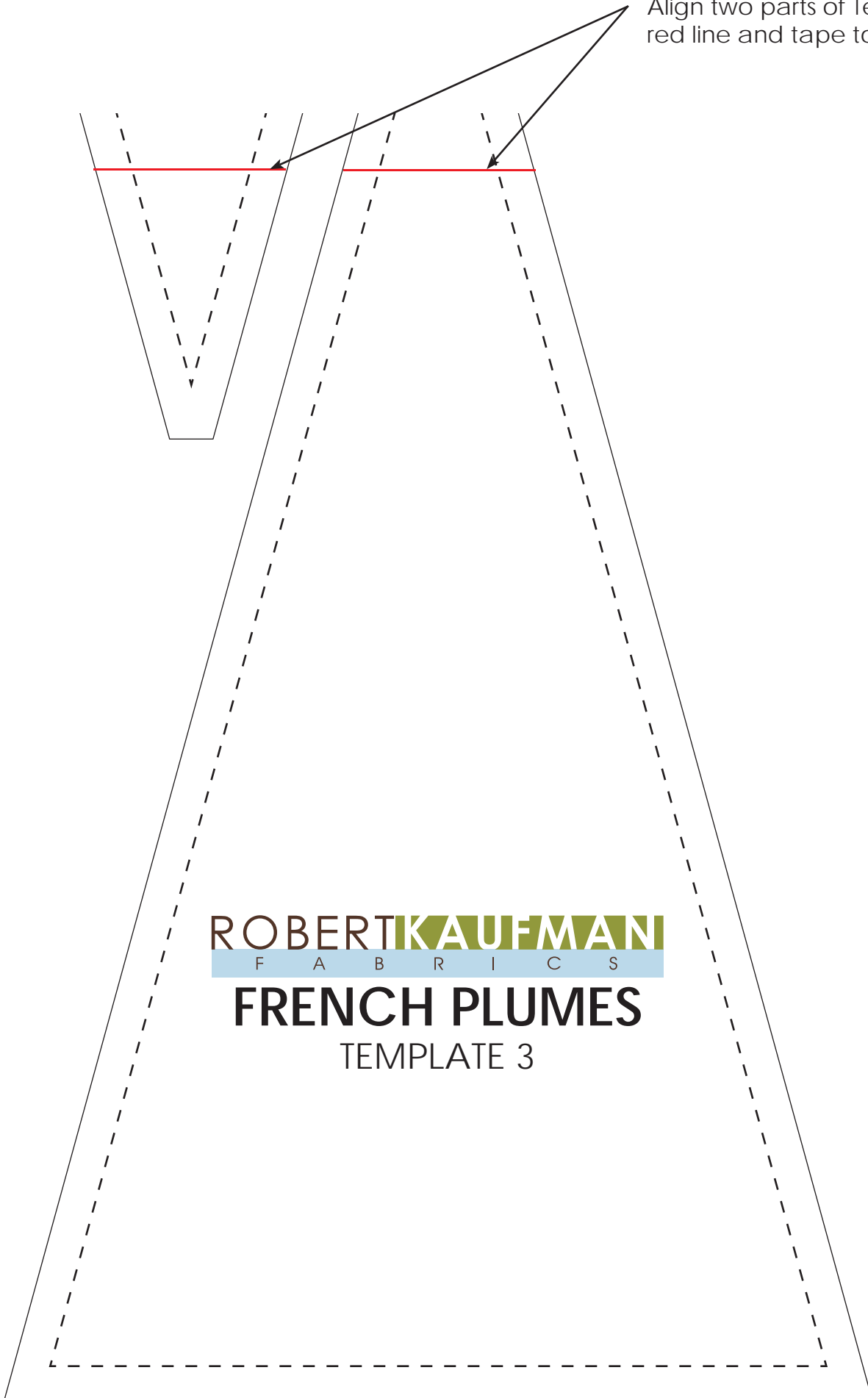


Align two parts of Template 4 along red line and tape together.

Align two parts of Template 2 along red line and tape together.

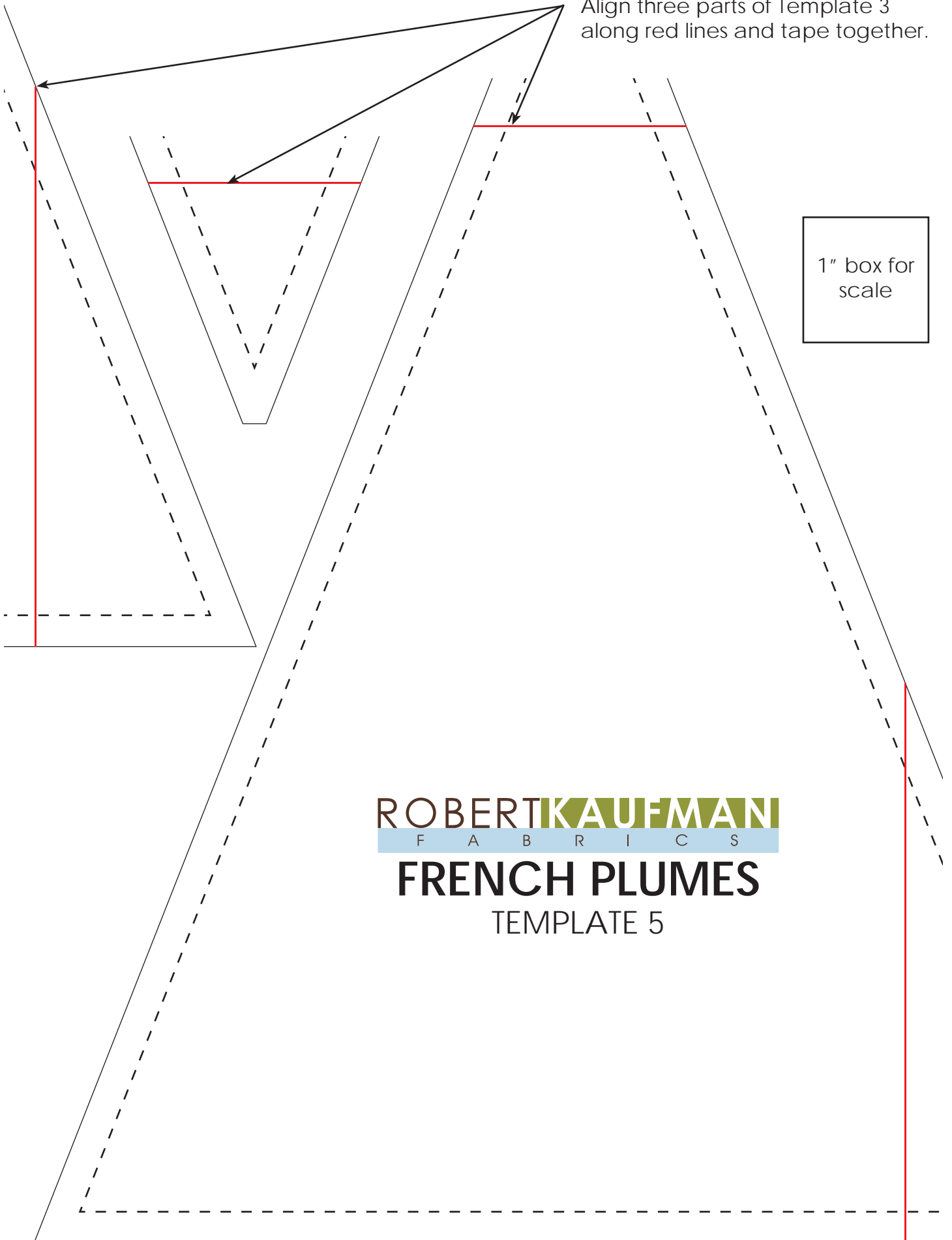


Align two parts of Template 3 along red line and tape together.



1" box for
scale

Align three parts of Template 3
along red lines and tape together.



1" box for
scale

ROBERT KAUFMAN
F A B R I C S

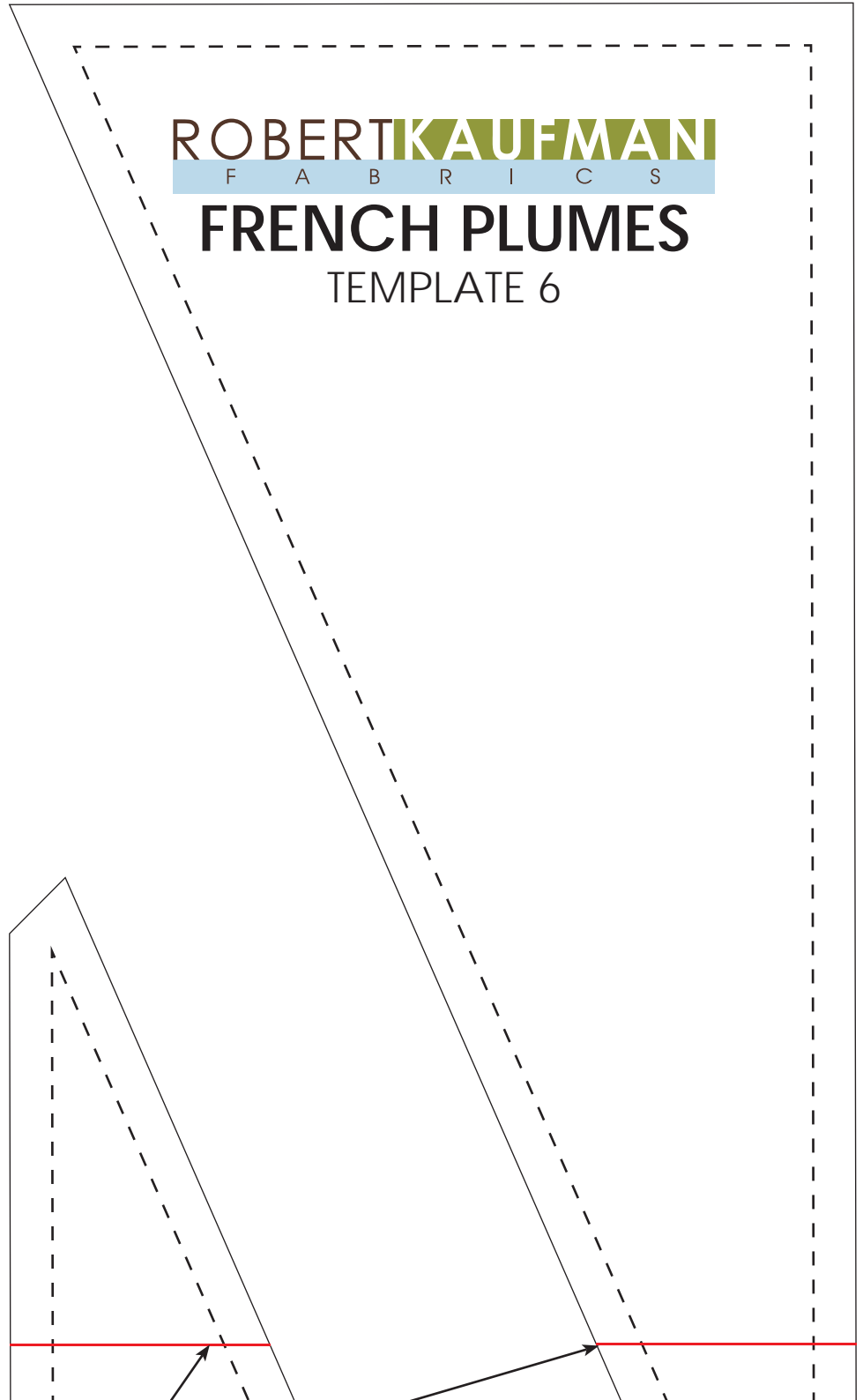
FRENCH PLUMES

TEMPLATE 5

ROBERT KAUFMAN
F A B R I C S

FRENCH PLUMES

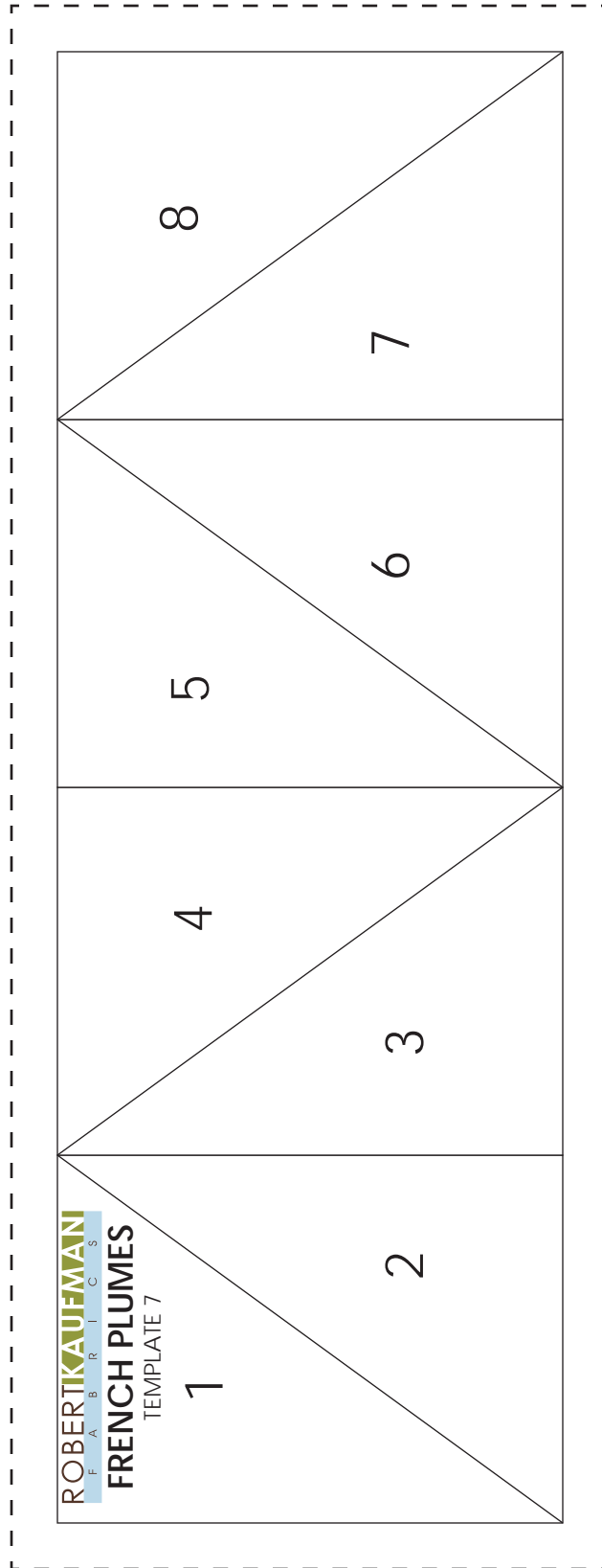
TEMPLATE 6



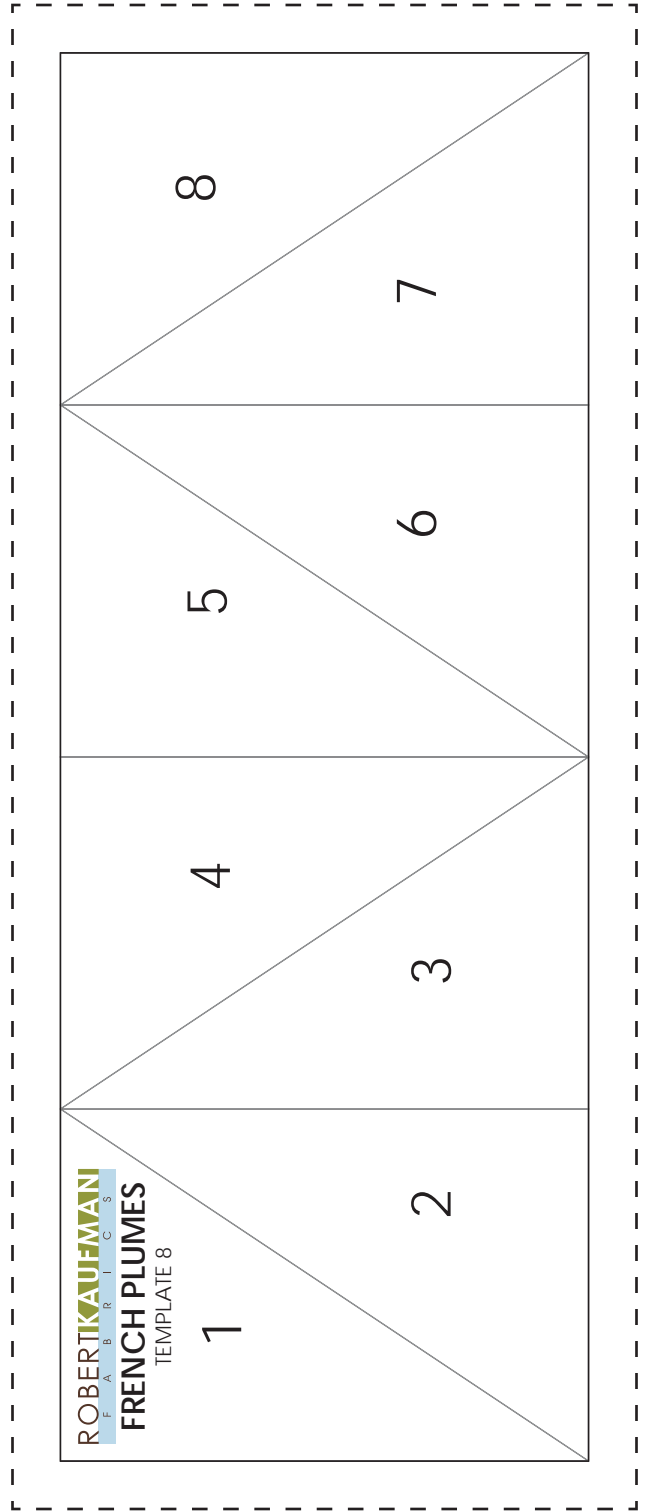
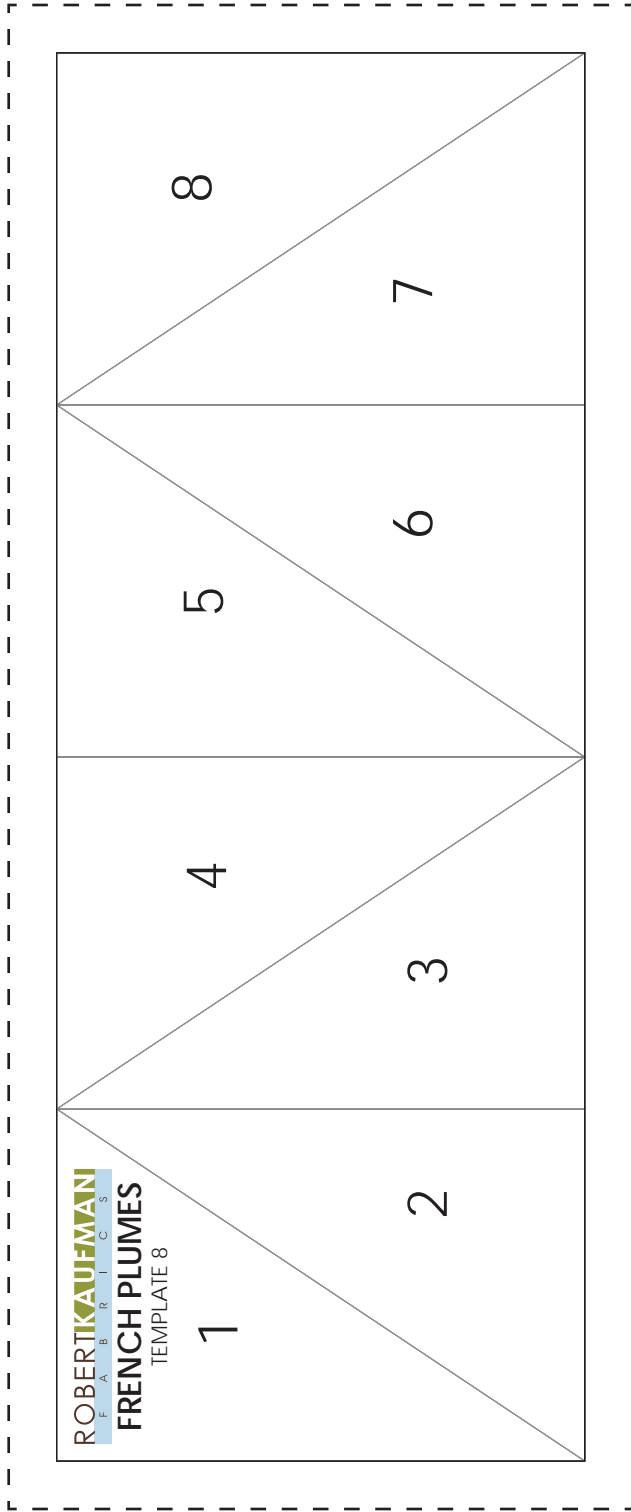
Align two parts of Template 1 along red line and tape together.

1" box for
scale

Print six copies of Template 7 onto printer or foundation paper. Print at 100% (do not scale).



Print twelve copies of Template 8 onto printer or foundation paper. Print at 100% (do not scale).









1" box for scale

FRENCH PLUMES - Peacock Colorstory



Fabric and Supplies Needed

Fabric amounts based on yardage that is 42" wide.

Color	Fabric	Name/SKU	Yardage	Color	Fabric	Name/SKU	Yardage
	A	ATRM-16940-78 PEACOCK	2/3 yard (one panel)		D	ATRM-16941-14 NATURAL	3/4 yard
	B	ATRM-16941-61 PERIWINKLE	2-5/8 yards		E	SRKM-16942-34 SAGE	1 yard
	C	SRKM-16942-78 PEACOCK	1-7/8 yards		Binding*	SRKM-16942-78 PEACOCK <i>*Also used for Fabric B</i>	5/8 yard

Copyright 2017, Robert Kaufman
For individual use only - Not for resale

You will also need:
5-1/4 yards for backing