

# FOXTROT

Designed by Robert Kaufman Fabrics  
[www.robertkaufman.com](http://www.robertkaufman.com)

Featuring  
**Fabulous Foxes**



Finished quilt measures: 60" x 72"

Shown in "NAVY". For alternate "PINK" colorstory see pages 7-8.

**Pattern Level: Confident Beginner**

*"I have basic block construction down  
and would like to learn a new trick!"*

**ROBERTKAUFMAN**  
F A B R I C S

## Fabric and Supplies Needed

*Fabric amounts based on yardage that is 40" wide.*

Color	Fabric	Name/SKU	Yardage	Color	Fabric	Name/SKU	Yardage
	A	AHE-15637-4 BLUE	2/3 yard		F	AHE-15638-1 WHITE	3/4 yard
	B	AHE-15638-3 RED	2/3 yard		G	K001-1314 ROYAL	2/3 yard
	C	AHE-15638-9 NAVY	2/3 yard		H	K001-1480 CHINESE RED	3/4 yard
	D	AHE-15637-2 BLACK	2/3 yard		I	AHE-15634-9 NAVY <i>(includes binding)</i>	1 yard
	E	K001-1387 WHITE	1-3/4 yard		J	AHE-15634-12 GREY	1/2 yard
Copyright 2015, Robert Kaufman For individual use only - Not for resale				You will also need: 4 yards for backing			

### Notes Before You Begin

- Read through all of the instructions before beginning.
- All of the seam allowances are 1/4" unless otherwise noted.
- Press seam allowances open unless otherwise noted.
- Width of fabric (WOF) is equal to at least 40" wide.
- Right sides together has been abbreviated to RST.
- Remember to measure twice and cut once!

### Printing Instructions

Prepare sixty copies of foundation paper Template A (page 6) on copy paper. Trim to the outer seam allowance marking.



## Cutting Instructions

From **Fabric A-D**, cut:

- Three 7" x WOF strips. Subcut fifteen 7" squares.

From **Fabric E**, cut:

- Twenty-four 2-1/4" x WOF strips. Subcut one hundred twenty pieces 2-1/4" x 7-1/2".

From **Fabric F**, cut:

- Six 3-7/8" x WOF strips. Subcut sixty 3-7/8" squares. Cut each square in half diagonally once to create two triangles for a total of one hundred twenty triangles.

From **Fabric G**, cut:

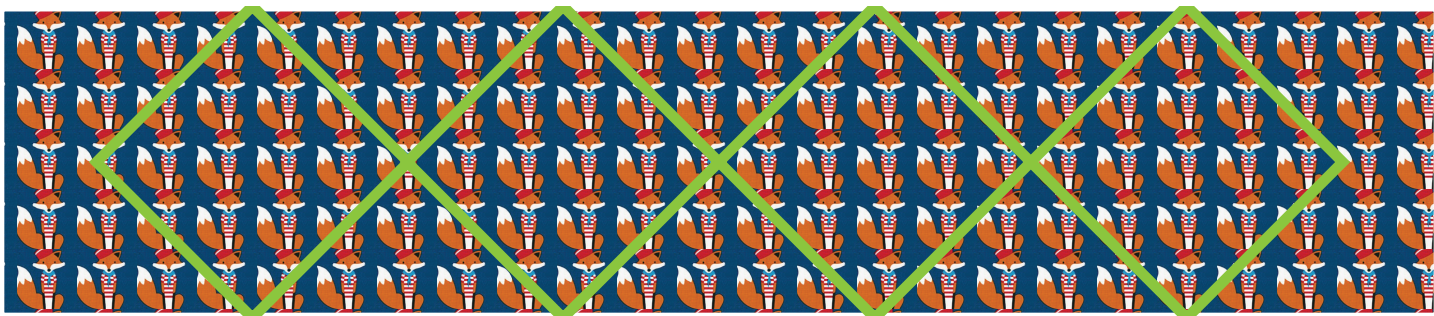
- Three 3-1/2" x WOF strips. Subcut thirty 3-1/2" squares.
- Five 1-7/8" x WOF strips. Subcut thirty 1-7/8" x 6-1/8" rectangles.

From **Fabric H**, cut:

- Three 3-1/2" x WOF strips. Subcut thirty 3-1/2" squares.
- Eight 1-7/8" x WOF strips. Subcut thirty 1-7/8" x 9" rectangles.

From **Fabric I**, cut:

- Two 8-3/4" x WOF strips. Subcut eight 6-1/8" squares, cut on point.



From **Fabric J**, cut:

- Two 8-3/4" x WOF strips. Subcut seven 6-1/8" squares, cut on point.

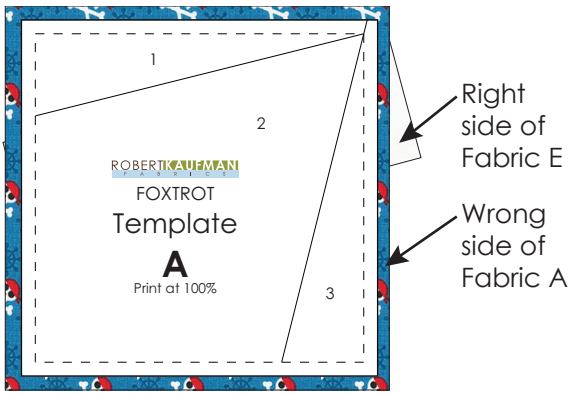
From **binding fabric**, cut:

- Seven 2-1/2" x WOF strips.

## Assembling the A Blocks



These blocks are constructed using a foundation paper piecing method. Paper piece the templates in numerical order, placing a Fabric A-D 7" square in the "2" position and Fabric E rectangles in the "1" and "3" positions.

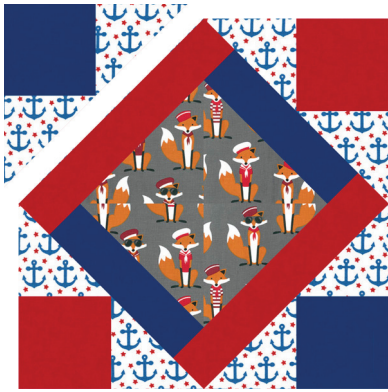


Trim the blocks to the template edge, yielding sixty 6-1/2" squares. Remove the paper. Arrange one A, B, C and D block in a two by two layout, referring to the Block Assembly Diagram. Sew together. Press seams open.

Repeat to create fifteen 12-1/2" A Blocks.



### Assembling the B Blocks

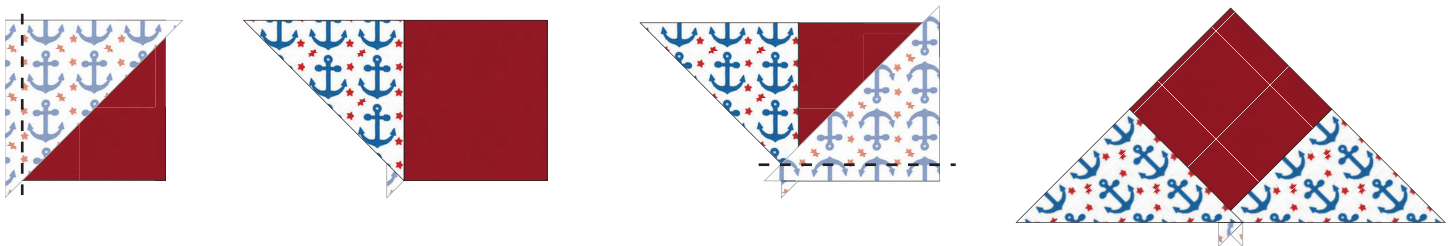


Sew a Fabric G rectangle to the lower left and upper right sides of each Fabric I and J squares, which are set on point. Press seams away from the square.

Sew a Fabric H rectangle to the upper left and lower right sides of each Fabric I and J squares, which are set on point. Press seams away from the square.

Repeat for all I and J squares. These will be referred to as the center square units.

Sew a short side of a Fabric F triangle to two adjacent sides of a 3-1/2" Fabric G and H square. Press seams away from the square.



Repeat for all Fabric G and H squares. These will be referred to as the triangle units.

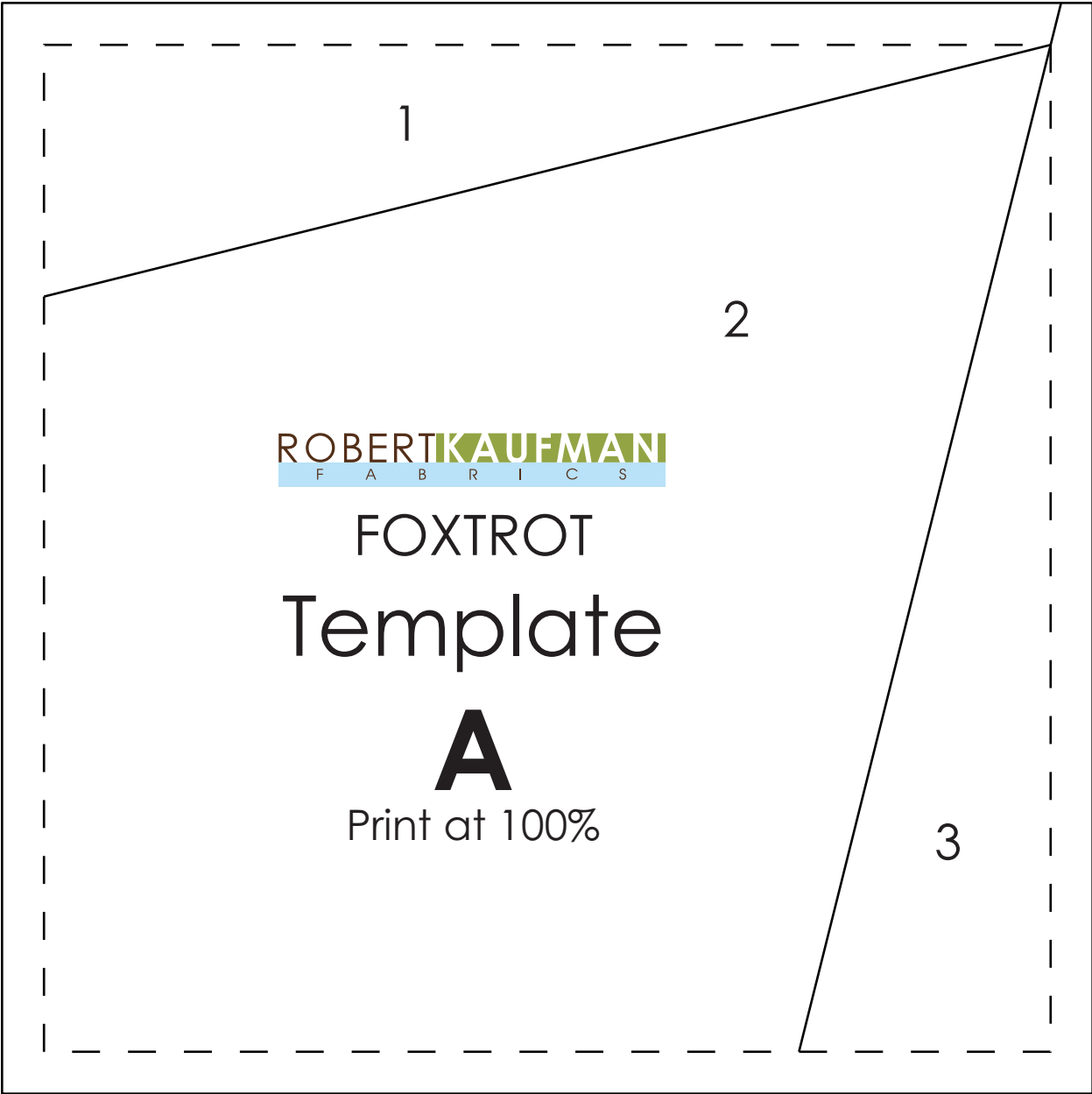
Sew Fabric H triangle units to upper right and lower left sides of a center square unit, pressing seams away from the triangle. Repeat, sewing Fabric G triangle units to the remaining center square unit sides, pressing seams toward the triangle.

Repeat for all remaining center square units to complete fifteen 12-1/2" B Blocks.

## Assembling the Quilt

Arrange the blocks in a layout of six rows of five blocks each, alternating the Block As and Bs, noting the color placement for the center squares of the B Blocks on the Quilt Assembly Diagram.





ROBERT KAUFMAN  
F A B R I C S

FOXTROT  
Template

**A**

Print at 100%










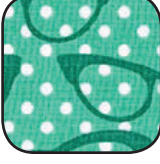






# PINK Colorstory

Fabric amounts based on yardage that is 40" wide.

Color	Fabric	Name/SKU	Yardage	Color	Fabric	Name/SKU	Yardage
	A	AHE-15635-10 PINK	2/3 yard		F	K001-1291 PINK	3/4 yard
	B	AHE-15635-70 AQUA	2/3 yard		G	K001- 445 KALE <i>(includes binding)</i>	1-1/8 yard
	C	AHE-15680-10 PINK	2/3 yard		H	K001-1295 POMEGRANATE	3/4 yard
	D	AHE-15680-70 AQUA	2/3 yard		I	AHE-15636-10 PINK	1/2 yard
	E	K001-1387 WHITE	1-3/4 yard		J	AHE-15636 - 70 AQUA	1/2 yard

Copyright 2015, Robert Kaufman  
For individual use only - Not for resale

You will also need:  
4 yards for backing