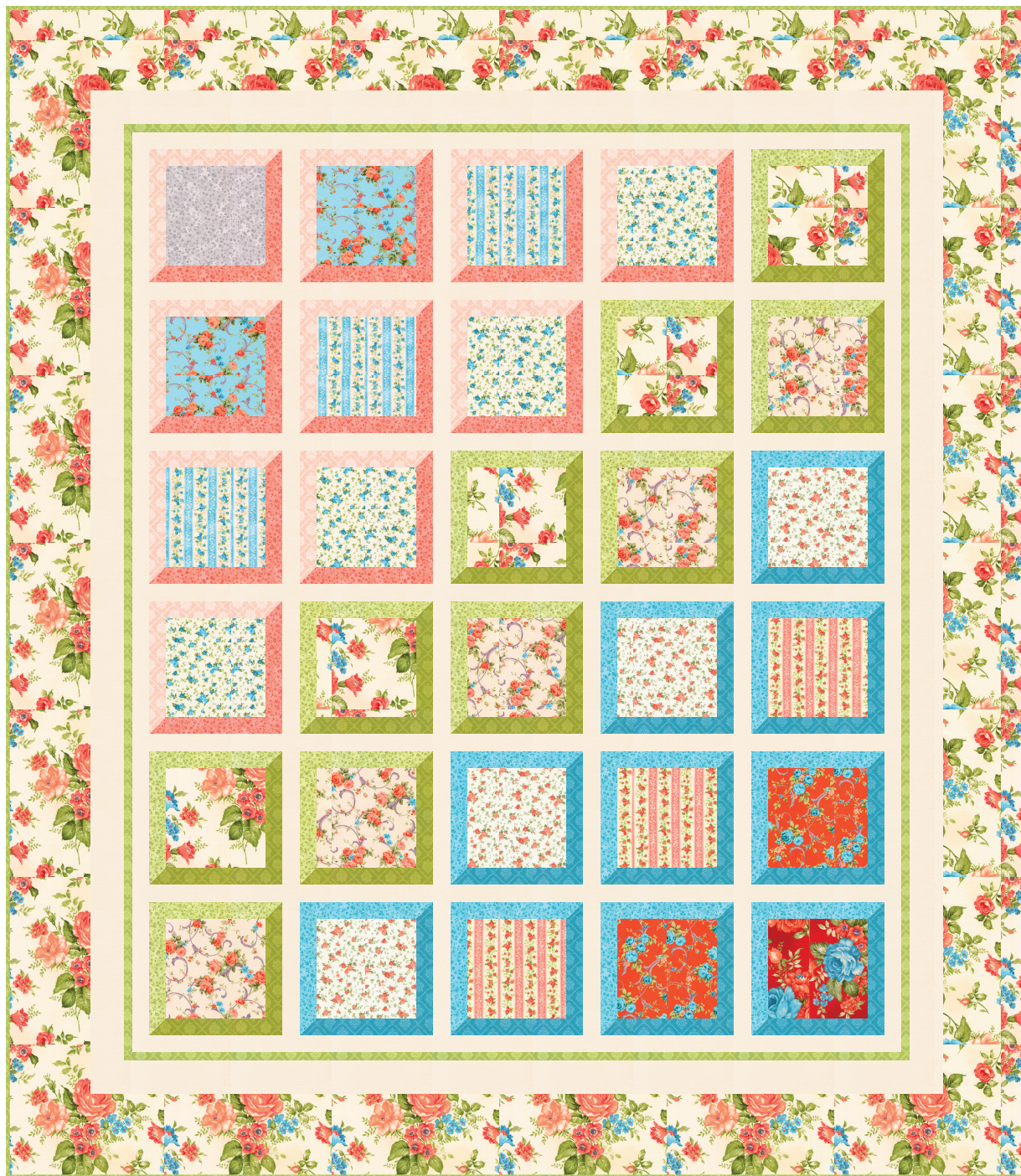


# FLOWER BOX

Designed by Elise Lea for RK  
[www.robertkaufman.com](http://www.robertkaufman.com)

Featuring **Cassandra** STUDIO RK



Finished quilt measures: 61" x 71"

Difficulty Rating: **Beginner**

**ROBERTKAUFMAN**  
F A B R I C S




For questions about this pattern, please email [Patterns@RobertKaufman.com](mailto:Patterns@RobertKaufman.com).

## Fabric and Supplies Needed

*Fabric amounts based on yardage that is 42" wide.*

Color	Fabric	Name/SKU	Yardage	Color	Fabric	Name/SKU	Yardage
	A	K001-1037 BONE	1-1/4 yard		I	SRKD-18685-149 APRICOT	1/4 yard
	B	SRKD-18683-304 SHADOW	1/4 yard		J	SRKD-18684-149 APRICOT	1/4 yard
	C	SRKD-18684-63 SKY	1/4 yard		K	SRKD-18682-238 GARDEN	1/4 yard
	D	SRKD-18685-63 SKY	1/4 yard		L	SRKD-18687-149 APRICOT	1/4 yard
	E	SRKD-18686-63 SKY	1/4 yard		M	SRKD-18683-149 APRICOT	1/4 yard
	F	SRKD-18682-84 CREAM	1-1/4 yard		N	SRKD-18683-43 LEAF	1/4 yard
	G	SRKD-18684-84 CREAM	1/4 yard		O	SRKD-18687-47 GRASS	1/4 yard
	H	SRKD-18686-149 APRICOT	1/4 yard		P	SRKD-18683-63 SKY	1/4 yard

Fabric amounts based on yardage that is 42" wide.

Color	Fabric	Name/SKU	Yardage	Color	Fabric	Name/SKU	Yardage
	Q	SRKD-18687-63 SKY	1/4 yard		Binding*	SRKD-18687-43 LEAF	5/8 yard
	R	SRKD-18687-43 LEAF	1/4 yard	<i>*Also used for Fabric R</i>			
Copyright 2019, Robert Kaufman For individual use only - Not for resale				You will also need: 4 yards for backing			

## Notes Before You Begin

- Read through all of the instructions before beginning.
- All of the seam allowances are 1/4" unless otherwise noted.
- Press seam allowances open unless otherwise noted.
- Width of fabric (WOF) is equal to at least 42" wide.
- Right sides together has been abbreviated to RST.
- Remember to measure twice and cut once!

## Cutting Instructions

### From Fabric A, cut:

six 2-1/2" x WOF strips. Sew together, end-to-end, then trim:

two 2-1/2" x 51-1/2" top/bottom Border 3 strips

two 2-1/2" x 56-1/2" side Border 3 strips

seventeen 1-1/2" x WOF strips. Sew ten strips together, end-to-end, then trim:

two 1-1/2" x 46-1/2" top/bottom Border 1 strips

two 1-1/2" x 54-1/2" side Border 1 strips

four 1-1/2" x 53-1/2" column sashing strips

From the remaining seven strips, cut:

twenty-five 1-1/2" x 8-1/2" block sashing strips

### From each of Fabrics Fabric B and K, cut:

one 6-1/2" square for the block centers

### From each of Fabrics C and J, cut:

one 6-1/2" x WOF strip. Subcut:

two 6-1/2" squares for the block centers



**From each of Fabrics D and I, cut:**

one 6-1/2" x WOF strip. Subcut:  
three 6-1/2" squares for the block centers

**From each of Fabrics E and H, cut:**

one 6-1/2" x WOF strip. Subcut:  
four 6-1/2" squares for the block centers

**From Fabric F, cut:**

six 5-1/2" x WOF strips. Sew together, end-to-end, then trim:  
two 5-1/2" x 61-1/2" top/bottom Border 4 strips  
two 5-1/2" x 60-1/2" side Border 4 strips  
one 6-1/2" x WOF strip. Subcut:  
five 6-1/2" squares for the block centers

**From Fabric G, cut:**

one 6-1/2" x WOF strip. Subcut:  
five 6-1/2" squares for the block centers

**From each of Fabrics L-Q, cut:**

one 2" x WOF strip. Subcut:  
ten 2" squares for the block border HSTs  
four 1-1/2" x WOF strips. Subcut:  
ten 1-1/2" x 6-1/2" rectangles for the block borders  
ten 1-1/2" x 7-1/2" rectangles for the block borders

**From Fabric R, cut:**

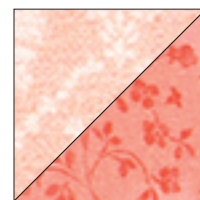
five 1" x WOF strips. Sew together, end-to-end, then trim:  
two 1" x 47-1/2" top/bottom Border 2 strips  
two 1" x 55-1/2" side Border 2 strips

**From the Binding Fabric, cut:**

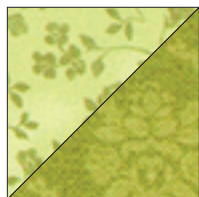
seven 2-1/2" x WOF strips

## Assemble the Half-Square Triangles

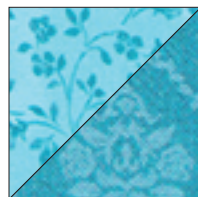
**Step 1:** Pair a 2" Fabric L square with a 2" Fabric M square, RST. Mark a diagonal line on the wrong side of one square. Sew 1/4" away from both sides of the marked line. Cut on the marked line, creating two half-square triangles (HSTs). Press toward the darker fabric. Trim to 1-1/2" square. Repeat to make twenty L/M HSTs.



**Step 2:** Repeat Step 1 to make:



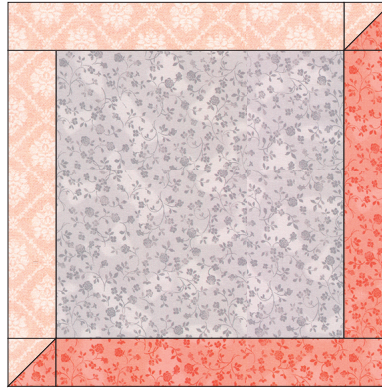
twenty N/O HSTs



twenty P/Q HSTs



## Assemble the Blocks



### Step 3: Gather:

the 6-1/2" Fabric B square

two L/M HSTs

one 1-1/2" x 6-1/2" Fabric L strip

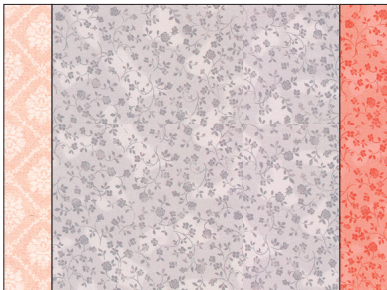
one 1-1/2" x 7-1/2" Fabric L strip

one 1-1/2" x 6-1/2" Fabric M strip

one 1-1/2" x 7-1/2" Fabric M strip



Arrange the units into three rows, as shown. Note the fabric placement and block orientation in the Block Assembly Diagram.



**Step 4:** Sew the units together to form the rows. Press the seams toward the 1-1/2" strips.

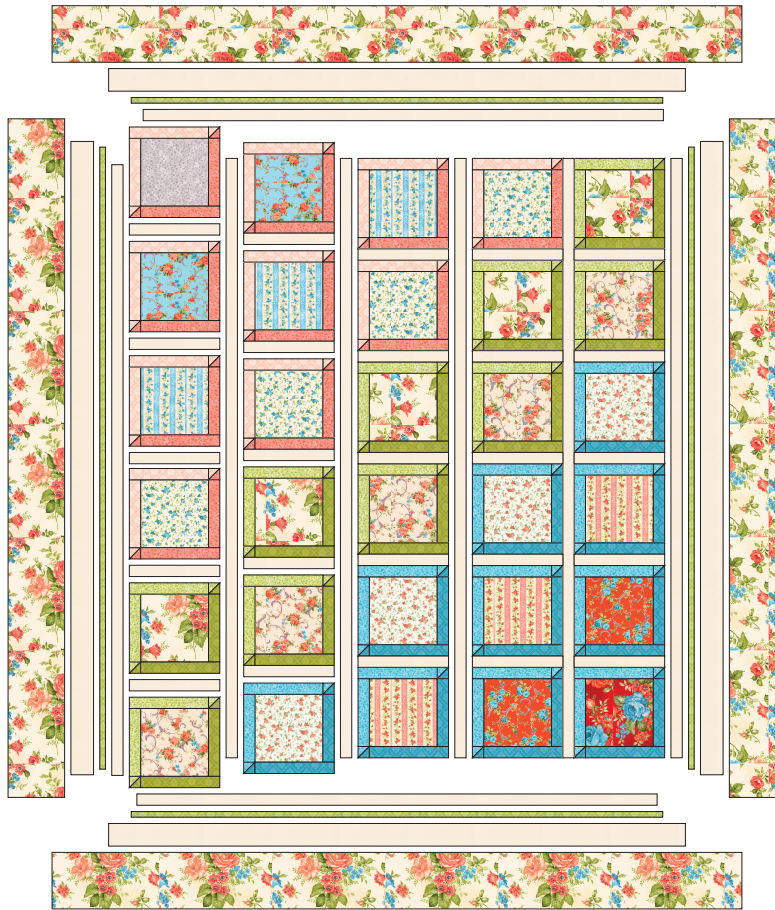
**Step 5:** Sew the rows together, nesting the seams and pressing the seams to one side to form the block.

The resulting block should measure 8-1/2" square.



**Step 6:** Repeat Steps 3-5 to make the remaining twenty-nine blocks. Refer to the Quilt Assembly Diagram for fabric pairings.

## Assemble the Quilt



**Step 7:** Arrange the Blocks together in columns as indicated in the Quilt Assembly Diagram. Sew each column together, using block sashing strips between each block. Press seams toward the sashing. Repeat to make five block columns.

**Step 8:** Sew the 1-1/2" x 53-1/2" sashing and block columns together. Press seams open or to the sashing.

**Step 9:** Sew the side Border 1 strips to the sides of the quilt center. Press toward the borders. Sew the top and bottom Border 1 strips to the quilt center. Press toward the borders.

**Step 10:** Sew the side Border 2 strips to the sides of the quilt center. Press toward the borders. Sew the top and bottom Border 2 strips to the quilt center. Press toward the borders.

**Step 11:** Sew the side Border 3 strips to the sides of the quilt center. Press toward the borders. Sew the top and bottom Border 3 strips to the quilt center. Press toward the borders.

**Step 12:** Sew the side Border 4 strips to the sides of the quilt center. Press toward the borders. Sew the top and bottom Border 4 strips to the quilt center. Press toward the borders.

Your quilt top is complete! Baste, quilt, bind and enjoy!

This pattern may be used for personal purposes only and may not be reproduced in any form without the express permission from Robert Kaufman Fabrics. This pattern is not for resale. All patterns, unless otherwise attributed, are © Robert Kaufman Co., Inc. 2005-2019. All rights reserved.