

FARM LIFE

Designed by Robert Kaufman Fabrics Featuring
www.robertkaufman.com

down on the farm



Finished quilt measures: 51-1/2" x 55-1/2"

Pattern Level: Enthusiastic Novice

"I am a total beginner and want to learn more!"

ROBERTKAUFMAN
F A B R I C S

For questions about this pattern, please email Patterns@RobertKaufman.com.

Fabric and Supplies Needed

Fabric amounts based on yardage that is 42" wide.

Color	Fabric	Name/SKU	Yardage	Color	Fabric	Name/SKU	Yardage
	A	AJQ-17487-276 COUNTRY	2/3 yard (one panel)		D	ETJ-9864-178 SABLE	1-1/8 yard
	B	ETJ-9864-105 GARNET	1/2 yard		E	ETJ-9864-167 CHOCOLATE	1/2 yard
	C	ETJ-9864-135 MUSTARD	1/3 yard		Binding*	P-5689-93 SCARLET	1/2 yard
Copyright 2017, Robert Kaufman For individual use only - Not for resale				You will also need: 3-1/3 yards for backing			

Notes Before You Begin

- Read through all of the instructions before beginning.
- All of the seam allowances are 1/4" unless otherwise noted.
- Press seam allowances open unless otherwise noted.
- Width of fabric (WOF) is equal to at least 42" wide.
- Right sides together has been abbreviated to RST.
- Remember to measure twice and cut once!

Cutting Instructions

From Fabric A, cut:

one 12-1/2" x 20-1/2" center block
 four 12-1/2" x 10-1/2" corner blocks

From Fabric B, cut:

two 2-1/2" x WOF strips. Subcut one of each length from each strip to yield:
 two 2-1/2" x 12-1/2" top/bottom border strips for the center block
 two 2-1/2" x 24-1/2" side border strips for the center block
 five 1-1/2" x WOF strips. Sew together, end-to-end, then trim to yield:
 two 1-1/2" x 40-1/2" top/bottom inner borders
 two 1-1/2" x 46-1/2" side inner borders

From Fabric C, cut:

one 3" x WOF strip. Subcut:

eight 4-1/2" x 3" rectangles for the top/bottom pieced sections

two 3-1/2" x WOF strips. Subcut:

sixteen 3-1/2" squares for the side pieced sections

Fabric Fabric D, cut:

five 5" x WOF strips. Sew together, end-to-end, then trim to yield:

two 5" x 55-1/2" side outer borders

two 5" x 42-1/2" top/bottom outer borders

one 3" x WOF strip. Subcut:

eight 4-1/2" x 3" rectangles for the top/bottom pieced sections

two 3-1/2" x WOF strips. Subcut:

sixteen 3-1/2" squares for the side pieced sections

From Fabric E, cut:

two 3" x WOF strips. Subcut:

sixteen 4-1/2" x 3" rectangles for the top/bottom pieced sections

three 3-1/2" x WOF strips. Subcut:

thirty-two 3-1/2" squares for the side pieced sections

From the Binding Fabric, cut:

six 2-1/2" x WOF strips

Assemble the Quilt Center

Step 1: Sew the Fabric B top/bottom block border strips to the Fabric A center block. Press toward the border. Sew the Fabric B side block border strips to the Fabric A center block. Press toward the border. Set aside.



Step 2: Gather two Fabric C rectangles and two Fabric E rectangles. Sew together along the short edges to form a row, alternating fabrics as shown. Press toward the Fabric E rectangles. Repeat to make four rows like this.

Step 3: Repeat Step 2 with two Fabric D and two Fabric E rectangles. Repeat to make four rows like this.



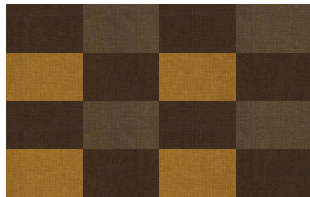
Step 4: Gather two completed Step 2 units and two completed Step 3 units. Sew together as shown to make the top pieced unit. Press the row seams open or to one side. Repeat to make the bottom pieced unit.

Step 5: Gather four Fabric C squares and four Fabric E squares. Sew together to form a column, alternating fabrics as shown. Press toward the Fabric E squares. Repeat to make four columns like this.

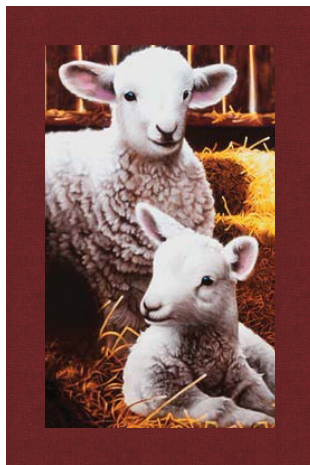


Step 6: Repeat Step 5 with four Fabric D and four Fabric E squares. Repeat to make four columns like this.

Step 7: Gather two completed Step 5 units and two completed Step 6 units. Sew together as shown to make a side pieced unit. Press the seams open or to one side. Repeat to make a second side pieced unit.



Step 8: Sew a side pieced unit to the left and right edges of the center block, noting the orientation of the fabrics in the Quilt Assembly Diagram. Press toward the center block. This is the center row of the quilt.



Step 9: Sew a Fabric A corner block to the left and right edges of the top pieced unit, noting the orientation of the fabrics in the Quilt Assembly Diagram. Press toward the corner blocks. This is the top row of the quilt. Repeat to make the bottom row, paying careful attention to the placement/orientation in the Quilt Assembly Diagram.



Step 10: Sew the top, center and bottom rows of the quilt together to form the quilt center, pressing the seams open.

Add the Borders



Step 11: Sew the Fabric B top and bottom inner borders to the quilt center. Press toward the borders. Sew the Fabric B side inner borders to the sides of the quilt center. Press toward the borders.

Step 12: Sew the Fabric D top and bottom outer borders to the quilt center. Press toward the borders. Sew the Fabric D side outer borders to the sides of the quilt center. Press toward the borders.

Your quilt top is now complete! Baste, quilt, bind and enjoy!