

# Dresden Blooms

Bright colorstory  
designed by Jean Ann Wright for Robert Kaufman Fabrics

FREE!  
PATTERN

featuring  
Flower Shop



68" x 88"



**ROBERT KAUFMAN**  
F A B R I C S  
[www.robertkaufman.com](http://www.robertkaufman.com)

Pattern will be available to download free from  
[www.robertkaufman.com](http://www.robertkaufman.com) beginning May 2011



# Dresden Blooms

Bright color story  
designed by Jean Ann Wright for Robert Kaufman Fabrics

FREE!  
PATTERN

featuring  
Flower Shop



68" x 88"



**ROBERT KAUFMAN**  
F A B R I C S  
[www.robertkaufman.com](http://www.robertkaufman.com)

Pattern will be available to download free from  
[www.robertkaufman.com](http://www.robertkaufman.com) beginning May 2011



## Dresden Blooms quilt pattern

designed by Jean Ann Wright for Robert Kaufman Fabrics

featuring fabrics from Flower Shop

Quilt size: 68" x 88"

Block size: 10"

		Yardage	Bright	Vintage
Fabric A	fan blocks, border #2	2-1/4 yds	EKJ-11284-195	EKJ-11284-200
Fabric B	rail fence blocks	1-1/2 yd	EKJ-11285-195	EKJ-11285-200
Fabric C	fan blocks	1/2 yd	EKJ-11286-7	EKJ-11286-70
Fabric D	fan blocks	1/2 yd	EKJ-11286-108	EKJ-11286-10
Fabric E	fan/churn dash blocks	3/4 yd	EKJ-11286-129	EKJ-11286-129
Fabric F	binding and backing	6-1/4 yds	EKJ-11287-195	EKJ-11287-200
Fabric G	sashings, churn dash	1/4 yd	EKJ-11288-195	EKJ-11288-200
Fabric H	border #1	1 yard	EKJ-11289-2	EKJ-11289-3
Fabric I	churn dash blocks	1/8 yd	EKJ-11446-43	EKJ-11446-43
Fabric J	fan blocks	2/3 yd	EKJ-11446-195	EKJ-11446-200
Fabric K	2/3 yd (1 yd)	1/2 yd	EKJ-11290-195	EKJ-11290-200

### Cutting

**Fabric A** Cut (8) 8-1/2" x 72-1/2" length of fabric strips for side borders and (2) 8-1/2" x 68-1/2" length of fabric strips for top/bottom borders. Using Template A, cut (8) fan block base pieces from remaining fabric.

**Fabric B** Cut (9) 4-1/2" x wof strips, recut into (36) 4-1/2" x 10-1/2" strips

**Fabric C** Using Template B, cut (16) fan blades

**Fabric D** Using Template B, cut (16) fan blades

**Fabric E** Using Template B, cut (8) fan blades. Cut (3) 4-7/8" x wof strips, recut into (18) 4-7/8" squares

**Fabric F** Cut the backing into two equal pieces and sew together selvedge to selvedge. Trim backing to 4" larger all around than quilt top. Using fabric remaining after preparing backing, cut (4) 2-1/4" x length of fabric strips for binding.

**Fabric G** Cut (5) 2-1/2" x WOF strips, recut into (18) 2-1/2" x 10-1/2" sashing strips; Cut (4) 2-1/2" x WOF strips, recut into (36) 2-1/2" x 4-1/2" strips

**Fabric H** Cut (8) 1-1/2" x wof strips, recut into (2) 1-1/2" x 70-1/2" side borders and (2) 1-1/2" x 52-1/2" top/bottom borders

## Cutting (continued)

**Fabric I** Cut (1) 2-1/2" x wof strip, recut into (9) 2-1/2" squares

---

**Fabric J** Cut (2) 10-1/2" x wof strips, recut into (8) 10-1/2" squares

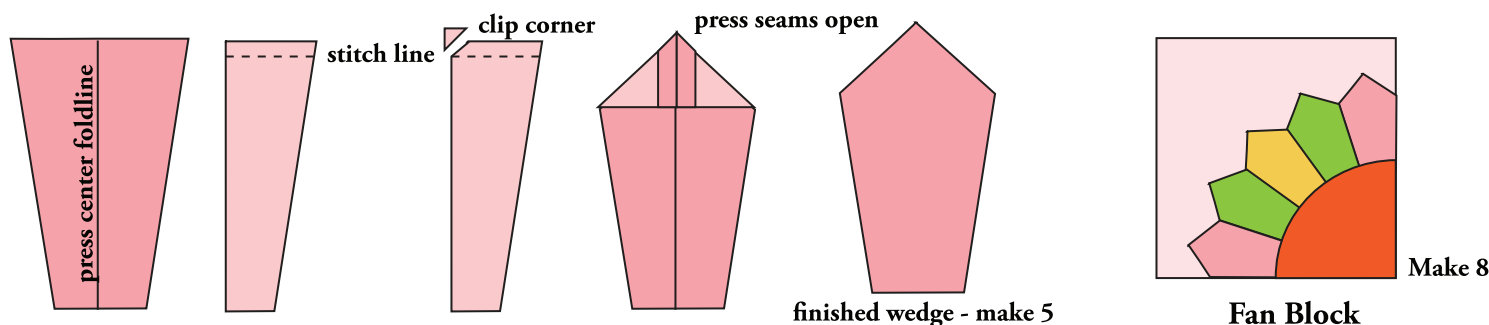
---

**Fabric K** Cut (3) 4-7/8" x wof strips, recut into (18) 4-7/8" squares

---

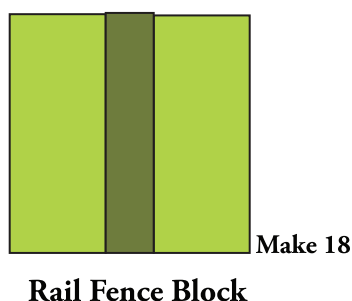
## Making the Quilt

1. Fan Blades: Refer to the fan block sewing diagram to sew the fan blades as follows: a) fold the fan wedge in half lengthwise with right sides together and press the fold line firmly. b) Sew across the wide top of the fan blade from the outside edge to the fold line using a 1/4" seam allowance. c) clip the corner on the folded size from the top to the seam line. d) fold the top of the fan blade down from the center point and press the seam allowance open. e) turn the fan blade right sides out and press the folded angles of the fan blades firmly in place (the raw edges on the long sides and the bottom of the fan blades will still be showing). Make 5 fan blades for each block.

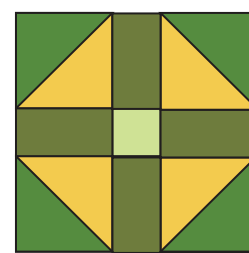


2. Fan Block Assembly: Sew (5) fan blades together to form a quarter circle. Press seams open. Position the quarter circle of fan blades on the 10-1/2" background square. Pin in place. Turn a 1/4" seam allowance under on the curved side of the fan base piece. Position on top of the fan blade quarter circle (there will be a generous overlap) with the raw edges of the two straight sides of the fan base even with the outside edges of the bottom corner of the background square. Applique the fan base in place by hand or machine. *Optional: trim away excess background fabric from back of fan base piece.* Make 8 blocks.

3. Churn Dash Block Assembly: Draw a diagonal line from corner to corner on the wrong side of the (18) **Fabric E** 4-7/8" squares. Position a **Fabric K** and a **Fabric E** 4-7/8" square with right sides together. Stitch 1/4" from each side of the drawn line. Cut the squares apart on the drawn line to make the corner areas of the churn dash block. Press both seams towards the darker fabric to yield (36) half square triangle units. Following the churn dash block diagram, sew a half square triangle unit to each side of (18) **Fabric G** rectangles to make a row. Sew the remaining (18) **Fabric G** rectangles to each side of a **Fabric I** 2-1/2" square to make a block center row. Make 9. Sew the half square triangle row to each side of the center row. Make 9 blocks.

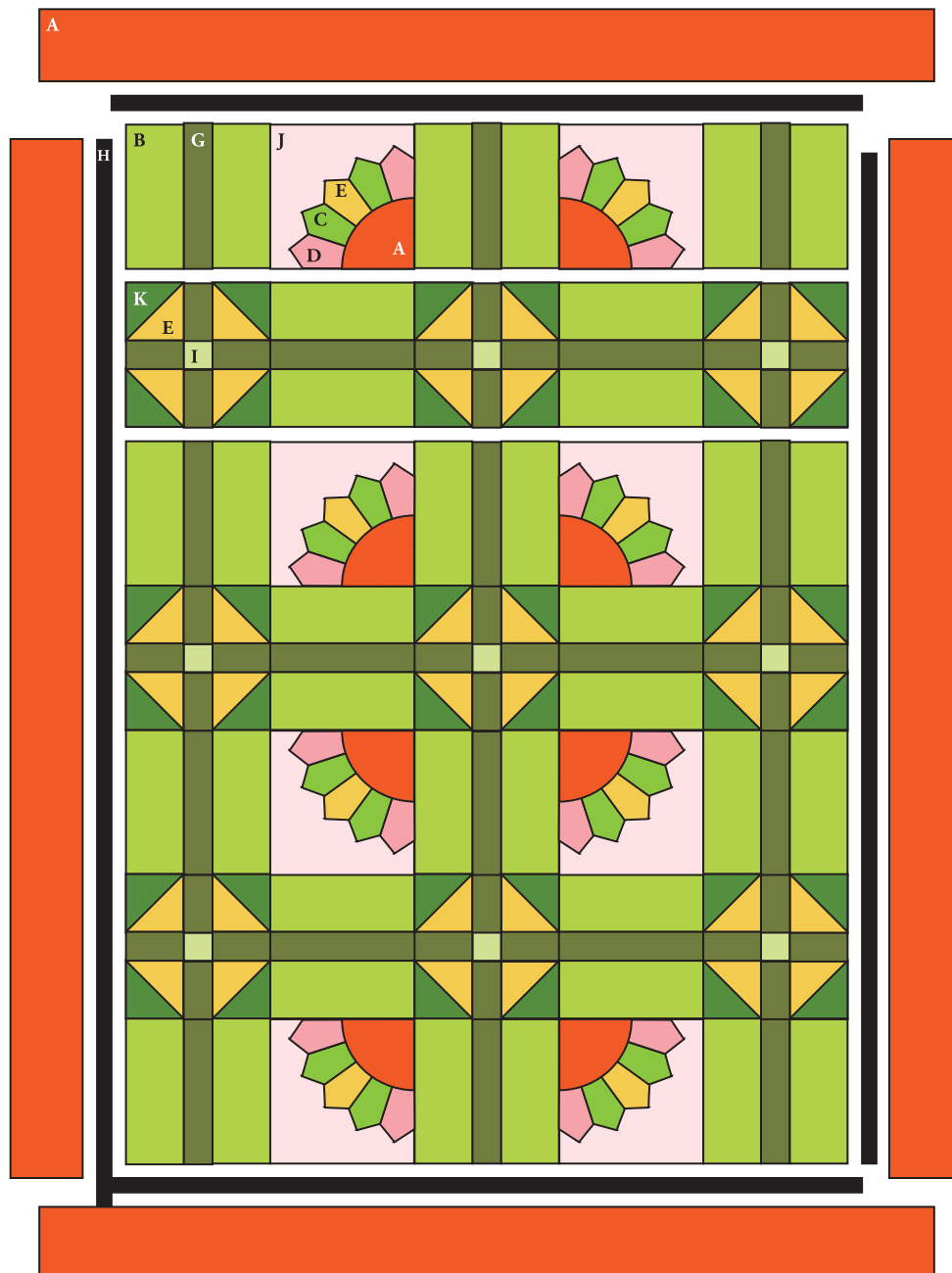


Rail Fence Block



Churn Dash Block

4. Rail Fence Blocks: Join a **Fabric B** 4-1/2" x 10-1/2" strip to each side of a 2-1/2" x 10-1/2" **Fabric G** strip. Make 18.
5. Quilt Assembly: Referring to the quilt assembly diagram, sew (4) rows with 3 rail fence blocks and (2) fan blocks. Sew (3) rows with (3) churn dash blocks and (2) rail fence blocks. Carefully watch orientation of the rail fence blocks. The fan block rows have vertical rail fence blocks and the churn dash rows have horizontal rail fence blocks. Sew the rows together alternating the fan rows and churn dash rows to complete the quilt center.
6. Border #1: Sew the **Fabric H** side borders to opposite sides of the quilt center. Sew the **Fabric H** top/bottom borders to the top and bottom of the quilt top.
7. Border #2: Sew the **Fabric A** borders to the quilt center in the same manner as border #1 to complete the quilt top.
8. Finishing: Layer the quilt top, batting and backing. Quilt the layers together. Bind the edges to complete the quilt.



Quilt Assembly Diagram

