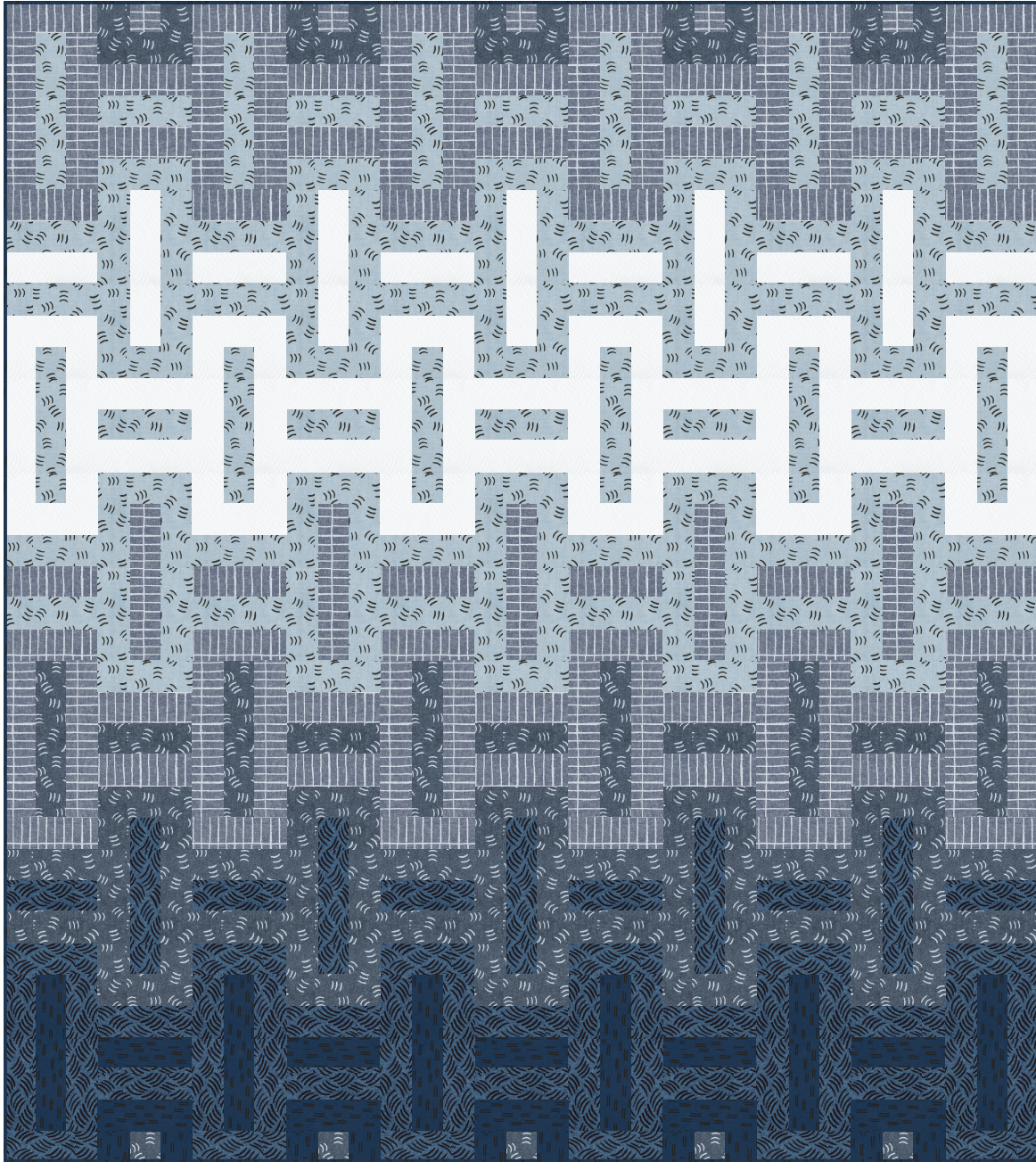


# CITY BLOCKS

Designed by Erin Dollar  
[www.erindollar.com](http://www.erindollar.com)

Featuring **balboa**  
ERIN DOLLAR



Finished quilt measures: 66" x 74"

Quilt shown in "DENIM" colorstory. For alternate "NEUTRAL" colorstory see pages 10-11.

Difficulty Rating: **Beginner**

**ROBERT KAUFMAN**  
F A B R I C S

For questions about this pattern, please email [Patterns@RobertKaufman.com](mailto:Patterns@RobertKaufman.com).

## Fabric and Supplies Needed

*Fabric amounts based on yardage that is 42" wide.*

Color	Fabric	Name/SKU	Yardage	Color	Fabric	Name/SKU	Yardage
	A	AOU-18256-1 WHITE	3/4 yard		E	AOU-18256-78 PEACOCK	3/4 yard
	B	AOU-18259-407 CHAMBRAY	1-1/4 yard		F	AOU-18257-69 MIDNIGHT	1/2 yard
	C	AOU-18258-67 DENIM	1-1/4 yard		Binding*	AOU-18257-69 MIDNIGHT <i>*Also used for Fabric F</i>	5/8 yard
	D	AOU-18259-266 NAUTICAL	7/8 yard	<div>You will also need: 4-1/8 yards for backing</div>			
Copyright 2018, Robert Kaufman For individual use only - Not for resale							

## Notes Before You Begin

- Read through all of the instructions before beginning.
- All of the seam allowances are 1/4" unless otherwise noted.
- Press seam allowances open unless otherwise noted.
- Width of fabric (WOF) is equal to at least 42" wide.
- Right sides together has been abbreviated to RST.
- Remember to measure twice and cut once!

**From Fabric A, cut:**

nine 2-1/2" x WOF strips. Subcut:  
seventeen 2-1/2" x 10-1/2" rectangles  
twenty-eight 2-1/2" x 6-1/2" rectangles

**From Fabric B, cut:**

seventeen 2-1/2" x WOF strips. Subcut:  
thirty-two 2-1/2" x 10-1/2" rectangles  
fifty-four 2-1/2" x 6-1/2" rectangles

**From Fabric C, cut:**

sixteen 2-1/2" x WOF strips. Subcut:  
twenty-nine 2-1/2" x 10-1/2" rectangles  
fifty 2-1/2" x 6-1/2" rectangles  
five 2-1/2" squares

**From Fabric D, cut:**

eleven 2-1/2" x WOF strips. Subcut:  
sixteen 2-1/2" x 10-1/2" rectangles  
thirty-two 2-1/2" x 6-1/2" rectangles  
fifteen 2-1/2" squares

**From Fabric E, cut:**

nine 2-1/2" x WOF strips. Subcut:  
seventeen 2-1/2" x 10-1/2" rectangles  
twenty-eight 2-1/2" x 6-1/2" rectangles

**From Fabric F, cut:**

five 2-1/2" x WOF strips. Subcut:  
ten 2-1/2" x 10-1/2" rectangles  
ten 2-1/2" x 6-1/2" rectangles  
six 2-1/2" squares

**From the Binding Fabric, cut:**

eight 2-1/2" x WOF strips

## Assemble the Block 1

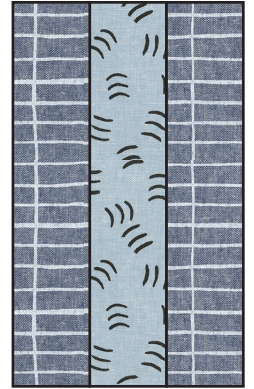
**Step 1:** Sew together in this order, along the longest edges:

2-1/2" x 10-1/2" Fabric C

2-1/2" x 10-1/2" Fabric B

2-1/2" x 10-1/2" Fabric C

Press toward the darker fabric. Repeat to make six of this block.



## Assemble the Block 2

**Step 2:** Sew together in this order, along the longest edges:

2-1/2" x 6-1/2" Fabric D

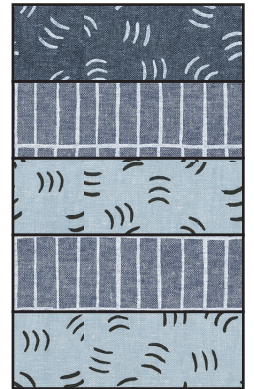
2-1/2" x 6-1/2" Fabric C

2-1/2" x 6-1/2" Fabric B

2-1/2" x 6-1/2" Fabric C

2-1/2" x 6-1/2" Fabric B

Press toward the darker fabric. Repeat to make five of this block.



## Assemble the Block 3

**Step 3:** Sew together in this order, along the longest edges:

2-1/2" x 6-1/2" Fabric C

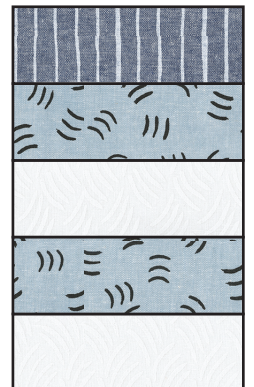
2-1/2" x 6-1/2" Fabric B

2-1/2" x 6-1/2" Fabric A

2-1/2" x 6-1/2" Fabric B

2-1/2" x 6-1/2" Fabric A

Press toward the darker fabric. Repeat to make six of this block.



## Assemble the Block 4

**Step 4:** Sew together in this order, along the longest edges:

2-1/2" x 10-1/2" Fabric B

2-1/2" x 10-1/2" Fabric A

2-1/2" x 10-1/2" Fabric B

Press toward the darker fabric. Repeat to make five of this block.



## Assemble the Block 5

**Step 5:** Sew together in this order, along the longest edges:

2-1/2" x 10-1/2" Fabric A

2-1/2" x 10-1/2" Fabric B

2-1/2" x 10-1/2" Fabric A

Press toward the darker fabric. Repeat to make six of this block.



## Assemble the Block 6

**Step 6:** Sew together in this order, along the longest edges:

2-1/2" x 6-1/2" Fabric B

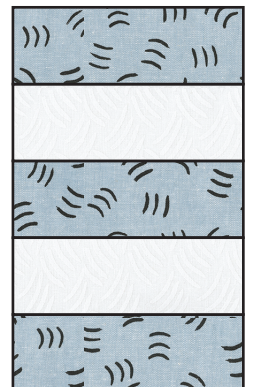
2-1/2" x 6-1/2" Fabric A

2-1/2" x 6-1/2" Fabric B

2-1/2" x 6-1/2" Fabric A

2-1/2" x 6-1/2" Fabric B

Press toward the darker fabric. Repeat to make five of this block.





## Assemble the Block 7

**Step 7:** Sew together in this order, along the longest edges:

2-1/2" x 6-1/2" Fabric A

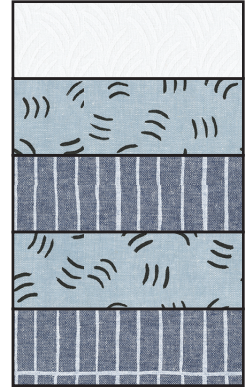
2-1/2" x 6-1/2" Fabric B

2-1/2" x 6-1/2" Fabric C

2-1/2" x 6-1/2" Fabric B

2-1/2" x 6-1/2" Fabric C

Press toward the darker fabric. Repeat to make six of this block.



## Assemble the Block 8

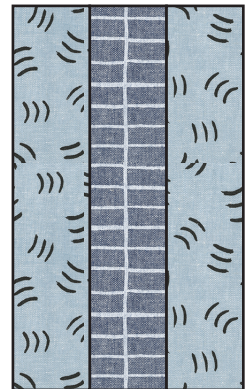
**Step 8:** Sew together in this order, along the longest edges:

2-1/2" x 10-1/2" Fabric B

2-1/2" x 10-1/2" Fabric C

2-1/2" x 10-1/2" Fabric B

Press toward the darker fabric. Repeat to make five of this block.



## Assemble the Block 9

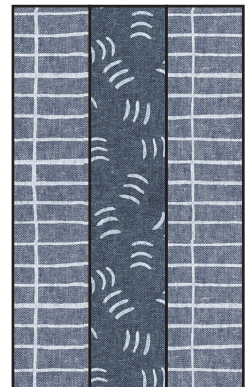
**Step 9:** Sew together in this order, along the longest edges:

2-1/2" x 10-1/2" Fabric C

2-1/2" x 10-1/2" Fabric D

2-1/2" x 10-1/2" Fabric C

Press toward the darker fabric. Repeat to make six of this block.



## Assemble the Block 10

**Step 10:** Sew together in this order, along the longest edges:

2-1/2" x 6-1/2" Fabric B

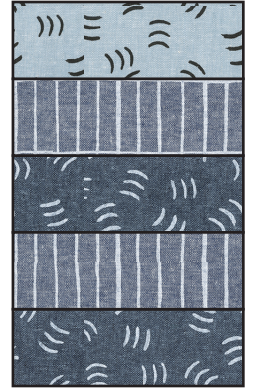
2-1/2" x 6-1/2" Fabric C

2-1/2" x 6-1/2" Fabric D

2-1/2" x 6-1/2" Fabric C

2-1/2" x 6-1/2" Fabric D

Press toward the darker fabric. Repeat to make five of this block.



## Assemble the Block 11

**Step 11:** Sew together in this order, along the longest edges:

2-1/2" x 6-1/2" Fabric C

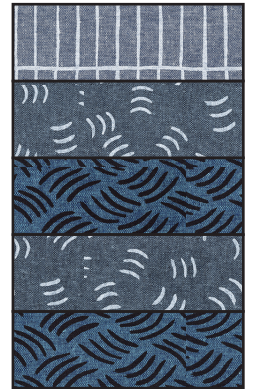
2-1/2" x 6-1/2" Fabric D

2-1/2" x 6-1/2" Fabric E

2-1/2" x 6-1/2" Fabric D

2-1/2" x 6-1/2" Fabric E

Press toward the darker fabric. Repeat to make six of this block.



## Assemble the Block 12

**Step 12:** Sew together in this order, along the longest edges:

2-1/2" x 10-1/2" Fabric D

2-1/2" x 10-1/2" Fabric E

2-1/2" x 10-1/2" Fabric D

Press toward the darker fabric. Repeat to make five of this block.



## Assemble the Block 13

**Step 13:** Sew together in this order, along the longest edges:

2-1/2" x 10-1/2" Fabric E

2-1/2" x 10-1/2" Fabric F

2-1/2" x 10-1/2" Fabric E

Press toward the darker fabric. Repeat to make six of this block.



## Assemble the Block 14

**Step 14:** Sew together in this order, along the longest edges:

2-1/2" x 6-1/2" Fabric D

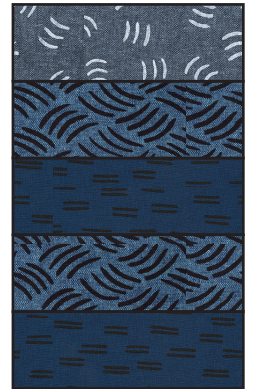
2-1/2" x 6-1/2" Fabric E

2-1/2" x 6-1/2" Fabric F

2-1/2" x 6-1/2" Fabric E

2-1/2" x 6-1/2" Fabric F

Press toward the darker fabric. Repeat to make five of this block.



## Assemble the Upper and Lower Rows

**Step 15:** Gather:

six 2-1/2" x 6-1/2" Fabric C rectangles

five 2-1/2" Fabric C squares

ten 2-1/2" Fabric D squares

Sew together to form the upper row, referring to the Quilt Assembly Diagram for fabric placement. Press the seams inward toward the Fabric C squares. Set aside for Row 1 of the quilt.

**Step 16:** Gather:

six 2-1/2" x 6-1/2" Fabric E rectangles

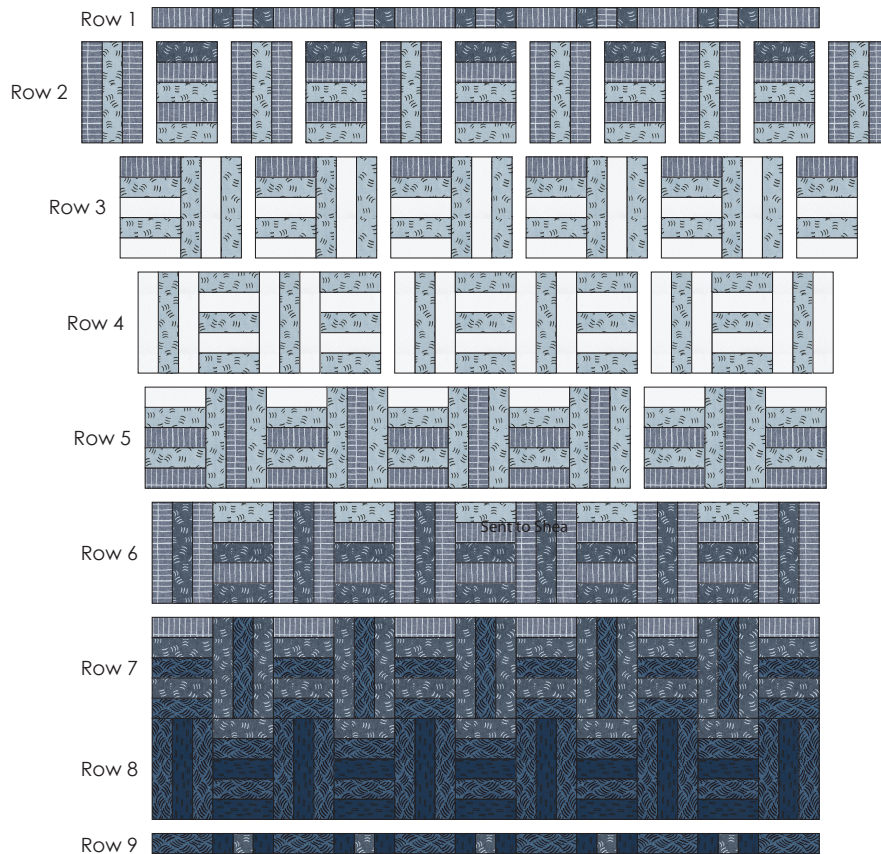
five 2-1/2" Fabric D squares

ten 2-1/2" Fabric F squares

Sew together to form the upper row, referring to the Quilt Assembly Diagram for fabric placement. Press the seams inward toward the Fabric D squares. Set aside for Row 9 of the quilt.



## Assemble the Quilt



**Step 17:** Sew the Block 1 and Block 2 units together to form a row, starting and ending the row with a Block 1 unit. Press the seams toward Block 1. This will be Row 2 of the quilt.

**Step 18:** Sew the Block 3 and Block 4 units together to form a row, starting and ending the row with a Block 3 unit. Press the seams toward Block 4. This will be Row 3 of the quilt.

**Step 19:** Sew the Block 5 and Block 6 units together to form a row, starting and ending the row with a Block 5 unit. Press the seams toward Block 5. This will be Row 4 of the quilt.

**Step 20:** Sew the Block 7 and Block 8 units together to form a row, starting and ending the row with a Block 7 unit. Press the seams toward Block 8. This will be Row 5 of the quilt.

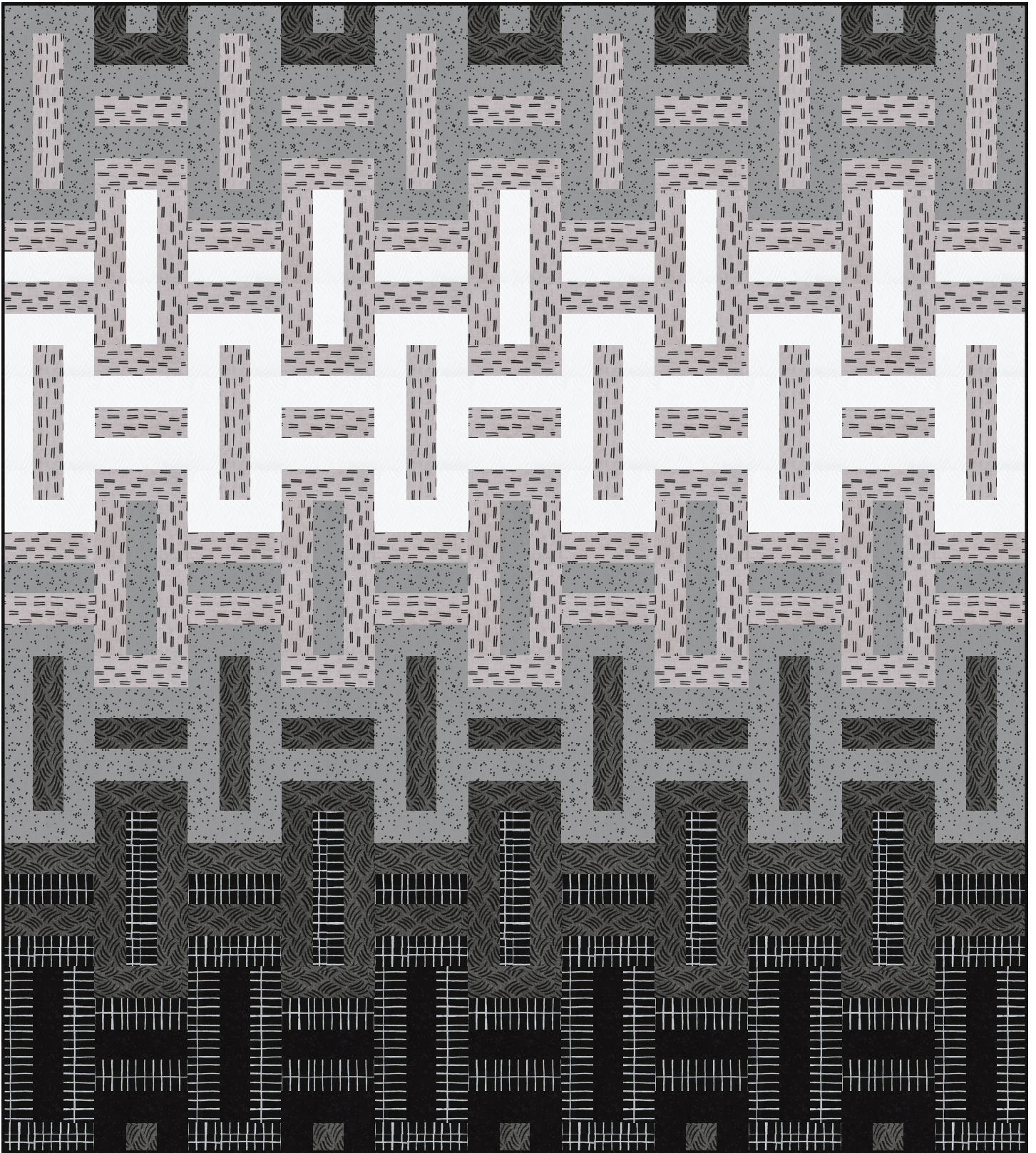
**Step 21:** Sew the Block 9 and Block 10 units together to form a row, starting and ending the row with a Block 9 unit. Press the seams toward Block 9. This will be Row 6 of the quilt.

**Step 22:** Sew the Block 11 and Block 12 units together to form a row, starting and ending the row with a Block 11 unit. Press the seams toward Block 12. This will be Row 7 of the quilt.

**Step 23:** Sew the Block 13 and Block 14 units together to form a row, starting and ending the row with a Block 13 unit. Press the seams toward Block 13. This will be Row 8 of the quilt.

**Step 24:** Sew Rows 1-9 together, in order, nesting the seams and pressing the row seams to one side.

Your quilt top is complete. Baste, quilt, bind and enjoy!



# CITY BLOCKS - Neutral Colorstory

## Fabric and Supplies Needed

*Fabric amounts based on yardage that is 42" wide.*

Color	Fabric	Name/SKU	Yardage	Color	Fabric	Name/SKU	Yardage
	A	AOU-18256-1 WHITE	3/4 yard		E	AOU-18258-2 BLACK	3/4 yard
	B	AOU-18257-414 HEATHER	1-1/4 yard		F	AOU-16875-190 JET	1/2 yard
	C	AOU-16875-185 STEEL	1-1/4 yard		Binding*	AOU-16875-190 JET <i>*Also used for Fabric F</i>	5/8 yard
	D	AOU-18256-184 CHARCOAL	7/8 yard	<div>You will also need: 4-1/8 yards for backing</div>			
Copyright 2018, Robert Kaufman For individual use only - Not for resale							