

# Chirp! Panel Quilt



Chirp! Panel Quilt  
Finished Size: 36" x 48"  
Fabric Requirements: (green/pink/blue colorways listed)

designed by Katie Hennagir for Robert Kaufman Fabrics

**One Chirp! Panel in the color of your choice (2/3 yard)**

**Green Quilt:**

Green Birds: 1/4 yard  
Yellow Stripe: 1/8 yard  
Brown Geo: 1/4 yard  
Green Geo: 1/3 yard  
White Circle Birds: 1/4 yard  
Yellow Hearts: 1/4 yard  
White Trees: Fat Quarter  
Yellow Geo: 1/4 yard  
Green Stripe: 1/6 yard  
Dark Brown Leaf: 5/6 yard\*  
\*includes binding  
Backing: 1 1/2 yards  
Batting: crib size

**Pink Quilt:**

Pink Birds: 1/4 yard  
Green Stripe: 1/8 yard  
Brown Geo: 1/4 yard  
Pink Geo: 1/3 yard  
White Circle Birds: 1/4 yard  
White & Pink Hearts: 1/4 yard  
White Trees: Fat Quarter  
Green Geo: 1/4 yard  
Pink Stripe: 1/6 yard  
Dark Brown Leaf: 5/6 yard\*

**Blue Quilt:**

Blue Birds: 1/4 yard  
Green Stripe: 1/8 yard  
Brown Geo: 1/4 yard  
Blue Geo: 1/3 yard  
White Circle Birds: 1/4 yard  
White & Blue Hearts: 1/4 yard  
White Trees: Fat Quarter  
Green Geo: 1/4 yard  
Blue Stripe: 1/6 yard  
Dark Brown Leaf: 5/6 yard\*

**Cutting Instructions:**

Cut out each block one at a time. I've put an "\*" next to a cutting measurement if you are able to get it out of a piece you've already cut off your yardage. For example, in Block B you will be able to cut the 3 1/2" squares of the Dark Brown Leaf from the 3 1/2" strip you already cut in Block A.

**Piecing Instructions: Use a 1/4" seam allowance. Press as you go.**

Each block will measure 18 1/2" x 16 1/2" (18" x 16" finished size)

Once you've completed each of the six blocks, sew them together following the quilt photo on the front page. To complete your quilt, layer your quilt top with batting & backing, quilt as desired, bind & enjoy.

\*Pink Quilt & Blue Quilt Fabrics are listed on the right. Substitute these Fabrics in the Piecing Instructions.

**Block A:**

Ribbon Panel: cut 15" x 9"  
Green Birds: cut 8 1/2" then x 4" (Pink or Blue Birds)  
Yellow Stripe: cut 4" x 8 1/2" (Green Stripe)  
Brown Geo Print: cut 2" x 15"  
Green Geo Print: cut 3 1/2" x 9 1/2" (Pink or Blue Geo)  
Dark Brown Leaf: cut 3 1/2" x 3 1/2"  
cut 3 1/2" x 3 1/2"  
White Circle Birds: cut 3 1/2" x 3 1/2"  
Yellow Hearts: cut 6" x 6 1/2" (Pink or Blue Hearts)



**Block A:**

Sew the Brown Geo strip to the top of the Ribbon Panel.  
Sew the two Dark Brown Leaf squares to either side of the White Circle Bird square.  
Sew the Green Geo Print to the top of your Dark Brown Leaf unit.  
Sew the Yellow Hearts to the right side of your Green Geo/Dark Brown Leaf unit.  
Sew the Green Geo/Yellow Hearts unit to the bottom of the Ribbon Panel unit.  
Sew the Green Birds rectangle to the top of the Yellow Stripe rectangle.  
Sew the Green Birds/Yellow Rectangle unit to the left side of the Ribbon Panel unit.

### Block B Cutting Instructions:

Announcement Panel: cut 11" x 12 1/2" ~embroider your panel before completing your quilt if you like

White Trees: cut 16 1/2" then x 5"

Yellow Geo Print: cut 3 1/2" x 8" (Green Geo)

Dark Brown Leaf: cut 3 1/2" x 3 1/2" \* (may be cut from previous block's fabric)  
cut 3 1/2" x 3 1/2" \*

White Circle Birds: cut 3 1/2" x 3 1/2" \*  
cut 3 1/2" x 3 1/2" \*

Green Birds: cut 3 1/2" x 6 1/2" \* (Pink or Blue Birds)

Green Geo: cut 14" then cut 1 1/2" \* (Pink or Blue Geo)

### Block B Piecing Instructions:

Sew a Dark Brown Leaf Square on top of a White Circle Bird square

Sew this Dark Brown Leaf unit on top of the Green Birds.

Sew this Dark Brown Leaf/Green Birds unit to the right side of the Panel.

Sew a Dark Brown Leaf square to the side of a White Circle Bird square. Sew the Yellow Geo rectangle to the left side of this unit.

Sew the Yellow Geo/Dark Brown Leaf unit to the top of the Panel unit

Sew the Green Geo rectangle to the bottom of the Panel unit.

Sew the White Trees to the left side of the Panel unit.



### Block C Cutting Instructions:

Swirl Panel: cut 11" x 13"

Green Geo Print: cut 2 1/2" x 18 1/2" \* (Pink or Blue Geo)

Green Stripe: cut 4 1/4" x 7 1/2" \* (Pink or Blue Stripe)

Brown Geo Print: cut 4 1/4" x 6"

Green Bird Print: cut 14 3/4" then x 2" \* (Pink or Blue Birds)

Yellow Geo Print: cut 4 1/4" x 9 1/2" (Green Geo)

White Circle Birds: cut 4 1/4" x 5 1/2"

### Block C Piecing Instructions:

Sew the Green Stripe to the top of the Brown Geo.

Sew the Green Stripe/Brown Geo unit to the right side of the Panel.

Sew the Green Birds to the bottom of the Panel unit.

Sew the White Circle Birds to the top of the Yellow Geo.

Sew the White Circle Birds/Yellow Geo unit to the Left side of the Panel unit.

Sew the Green Geo to the top of the Panel unit.



### Block D Cutting Instructions:

Heart Tree Panel: cut 11 1/2" x 13 1/2"

Dark Brown Leaf: cut 3 1/2" x 3 1/2" \*  
cut 3 1/2" x 3 1/2" \*

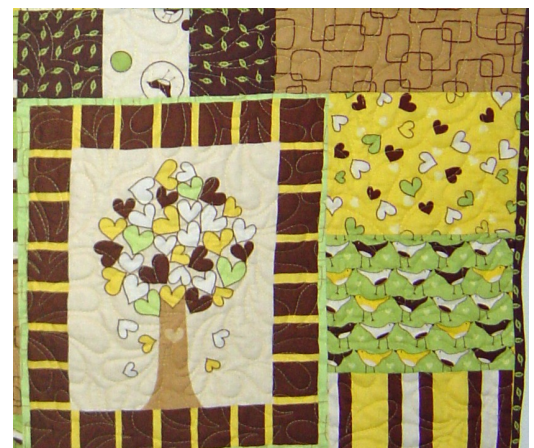
White Circle Bird: cut 3 1/2" x 3 1/2" \*

Brown Geo Print: cut 9 1/2" then x 3 1/2"\*

Yellow Hearts Print: cut 7 1/2" then x 5 1/2" \* (Pink or Blue Hearts)

Green Birds: cut 7 1/2" then x 5 1/2" \* (Pink or Blue Birds)

Yellow Stripe: cut 7 1/2" then x 3 1/2" \* (Green Stripe)



**Block D Piecing Instructions:**

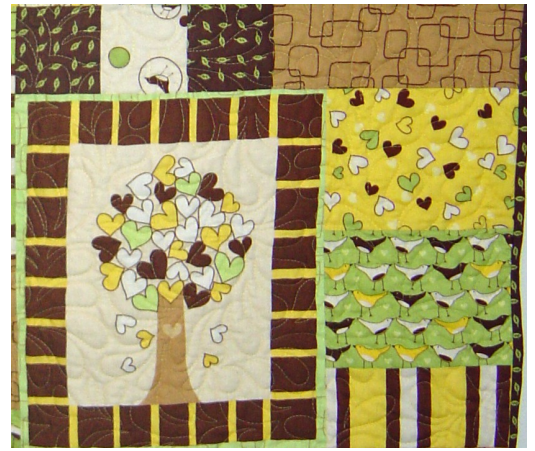
Sew the Yellow Hearts on top of the Green Birds.

Sew the Yellow Hearts/Green Birds unit on top of the Yellow Stripe

Sew the Yellow Hearts/Green Birds unit to the right side of the Panel unit.

Sew a Dark Brown Leaf square on each side of the White Circle Birds square. Sew this unit to the left side of the Brown Geo.

Sew the Dark Brown Leaf/Brown Geo unit to the top of the Panel unit.



**Block E Cutting Instructions:**

Tree with Nest Panel: cut 10 1/2" x 12"

Yellow Hearts Print: cut 18 1/2" then x 2" \*

Green Geo Print: cut 5 1/2" x 8"

Green Birds: cut 5 1/2" x 4 1/2" \*

Yellow Geo Print: cut 3 1/2" x 12 1/2" \*

Green Stripe: cut 6" then x 3 1/2" \*

White Circle Birds: cut 3 1/2" x 3 1/2" \*

cut 3 1/2" x 3 1/2" \*

Dark Brown Leaf: cut 3 1/2" x 3 1/2" \*

cut 3 1/2" x 3 1/2" \*

(Pink or Blue Hearts)

(Pink or Blue Geo)

(Pink or Blue Birds)

(Green Geo)

(Pink or Blue Stripe)



**Block E Piecing Instructions:**

Sew the Green Geo to the top of the Green Birds.

Sew the Green Geo/Green Birds unit to the Panel.

Sew a Dark Brown Leaf square to the left side of the Yellow Geo.

Sew the Dark Brown Leaf/Yellow Geo unit to the bottom of the Panel unit.

Sew the White Circle Bird squares to each side of the Dark Brown Leaf square. Sew the Green Stripe to the top of this unit.

Sew the Green Stripe unit to the left side of the Panel unit.

Sew the Yellow Hearts to the top of the Panel unit.

**Block F Cutting Instructions:**

Bird on Hearts Panel: cut 7 1/2" x 12"

Brown Geo Print: cut 15 1/2" then x 3 1/2" \*

Green Stripe: cut 12" then x 3" \*

Green Geo Print: cut 10" then x 2" \*

White Trees: cut 9" then x 7 1/2" \*

Yellow Hearts Print: cut 6" x 6 1/2" \*

Dark Brown Leaf: cut 3 1/2" x 3 1/2" \*

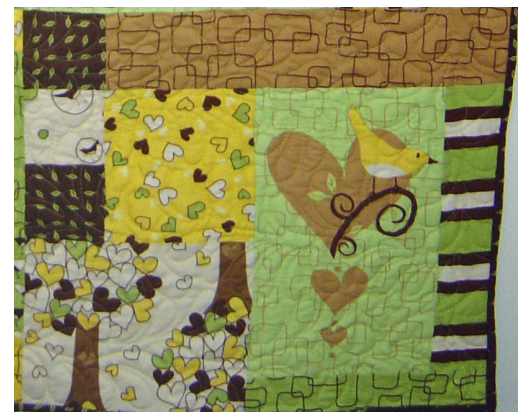
cut 3 1/2" x 3 1/2" \*

White Circle Birds: cut 3 1/2" x 3 1/2" \*

(Pink or Blue Stripe)

(Pink or Blue Geo)

(Pink or Blue Hearts)



**Block F Piecing Instructions:**

Sew the Green Stripe to the right side of the Panel. Sew the Green Geo to the bottom of the Panel unit.

Sew a Dark Brown Leaf and White Circle Bird square together. Sew this unit to the left side of the Yellow Hearts.

Sew the Yellow Hearts/Dark Brown Leaf unit to the top of the White Trees. Sew this White Trees unit to the left side of the Panel unit.

Sew a Dark Brown Leaf square to the left side of the Brown Geo. Sew the Brown Geo/Dark Brown Leaf unit to the top of the Panel unit.