

# Celebration

Designed by Valori Wells

[www.valoriwells.com](http://www.valoriwells.com)

Featuring

Blueprint Basics  
Valori Wells



Finished quilt measures: 78" x 78"

**Pattern Level: Confident Beginner**

*"I have basic block construction down  
and would like to learn a new trick!"*

**ROBERT KAUFMAN**  
F A B R I C S

# Fabric and Supplies Needed

Fabrics are listed by Half Roll Colorstory. You may use 1 of each Half Roll and then add an 1/8 yard to the fabrics which need extra strips (Number of 2-1/2" x WOF strips needed is indicated on each fabric swatch.)



Blueprint Basics  
Spring Half-Roll  
HR-113-20  
Consisting of the  
following fabrics:



AVW-14538-321  
SUNKISSED



AVW-14539-318  
PINK NECTAR



AVW-14540-317  
SALSA



AVW-14541-40  
EMERALD



AVW-14542-313  
ROYAL BLUE



AVW-14543-310  
LEAPFROG



AVW-14544-293  
SMOKE



AVW-14544-306  
GRAPPA



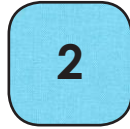
K001-1265  
ORANGE



K001-1295  
POMEGRANATE



K001-1387  
WHITE



K001-1514  
ROBIN EGG



Blueprint Basics  
Autumn Half-Roll  
HR-123-20  
Consisting of the  
following fabrics:



AVW-14538-311  
TURKISH SEA



AVW-14539-45  
MOSS



AVW-14539-62  
INDIGO



AVW-14540-117  
APPLE



AVW-14541-184  
CHARCOAL



AVW-14541-309  
BAMBOO



AVW-14542-307  
CONCORD GRAPE



AVW-14543-316  
COASTAL FOG



AVW-14544-319  
HONEYSUCKLE



K001-7  
TOMATO



K001-136  
BASIL



K001-151  
CYAN



K001-1479  
AMBER



Blueprint Basics  
Summer Half-Roll  
HR-115-20  
Consisting of the  
following fabrics:



AVW-14538-308  
FRESH DEW



AVW-14539-70  
AQUA



AVW-14540-21  
LILAC



AVW-14540-324  
SUNDANCE



AVW-14541-108  
FUCHSIA



AVW-14542-34  
SAGE



AVW-14543-168  
CINNAMON



AVW-14543-315  
VENETIAN



AVW-14544-82  
BLUE JAY



K001-261  
BUBBLE GUM



K001-1056  
BUTTERCUP



K001-1083  
COFFEE



K001-1239  
MUSHROOM



Blueprint Basics  
Winter Half-Roll  
HR-124-20  
Consisting of the  
following fabrics:



AVW-14538-323  
WALNUT



AVW-14539-88  
ICE



AVW-14540-185  
STEEL



AVW-14540-312  
STARRY NIGHT



AVW-14541-314  
CHINESE BLUE



AVW-14542-155  
STONE



AVW-14542-322  
ORANGE SPICE



AVW-14543-320  
SANGRIA



AVW-14544-325  
CELESTIAL



K001-199  
CACTUS



K001-411  
LEPRECHAUN



K001-1019  
BLACK



K001-1301  
PURPLE

If you do not use the Blueprint Basics Half Rolls, you will need:

- 1/8 yard each of 16 fabrics
- 1/4 yard each of 36 fabrics
- 1 - 2 1/2" x 2 1/2" square for the center

Also needed:  
 3/4 yard for binding  
 5 yards for backing  
 84" x 84" quilt batting

## Notes Before You Begin

- Please read through all of the instructions before beginning.
- All of the seam allowances are 1/4" unless otherwise noted.
- Width of fabric (WOF) is equal to at least 42" wide.
- Remember to measure twice and cut once!

## Cutting Instructions

This quilt uses a total of 52 fabrics.

You will need between 1 and 3 - 2 1/2" x 42" strips of each – see quantities below.

*For the purposes of this quilt pattern, we are calling the fabrics for each row a "color family," and they are designated on the illustrations as a single color.*

<b>Row 1:</b> Kona K001-1387 White . . . . . 1 strip AVW-14543-316 Coastal Fog . . . . . 2 strips AVW-14544-293 Smoke . . . . . 2 strips	<b>Row 10:</b> Kona K001-1019 Black . . . . . 1 strip AVW-14541-184 Charcoal . . . . . 2 strips AVW-14542-155 Stone . . . . . 2 strips
<b>Row 2:</b> Kona K001-1056 Buttercup . . . . . 1 strip AVW-14540-324 Sundance . . . . . 1 strip AVW-14538-321 Sunkissed . . . . . 1 strip AVW-14541-309 Bamboo . . . . . 2 strips	<b>Row 11:</b> AVW-14540-312 Starry Night . . . 1 strip AVW-14538-295 Iron . . . . . 2 strips AVW-14540-185 Steel . . . . . 2 strips
<b>Row 3:</b> Kona K001-199 Cactus . . . . . 2 strips AVW-14538-308 Fresh Dew . . . . . 1 strip AVW-14540-117 Apple . . . . . 2 strips	<b>Row 12:</b> AVW-14539-62 Indigo . . . . . 1 strip AVW-14544-82 Blue Jay . . . . . 2 strips AVW-14538-311 Turkish Sea . . . . . 2 strips
<b>Row 4:</b> Kona K001-1479 Amber . . . . . 1 strip Kona K001-1265 Orange . . . . . 2 strips AVW-14542-322 Orange Spice . . . . . 2 strips	<b>Row 13:</b> AVW-14541-314 Chinese Blue . . 1 strip AVW-14542-313 Royal Blue . . . . . 2 strips AVW-14543-315 Venetian . . . . . 2 strips
<b>Row 5:</b> Kona K001-7 Tomato . . . . . 1 strip AVW-14540-317 Salsa . . . . . 2 strip AVW-14543-320 Sangria . . . . . 2 strips	<b>Row 14:</b> Kona K001-1514 Robin Egg . . . . 2 strips AVW-14539-88 Ice . . . . . 3 strips
<b>Row 6:</b> Kona K001-1295 Pomegranate . . 2 strips AVW-14541-108 Fuchsia . . . . . 3 strips	<b>Row 15:</b> AVW-14539-70 Aqua . . . . . 2 strips AVW-14541-40 Emerald . . . . . 3 strips
<b>Row 7:</b> Kona K001-261 Bubble Gum . . . . 1 strip AVW-14544-319 Honeysuckle . . . . . 2 strips AVW-14539-318 Pink Nectar . . . . . 2 strips	<b>Row 16:</b> Kona K001-151 Cyan . . . . . 2 strips AVW-14544-325 Celestial . . . . . 3 strips
<b>Row 8:</b> Kona K001-1301 Purple . . . . . 1 strip AVW-14544-306 Grappa . . . . . 1 strip AVW-14540-21 Lilac . . . . . 1 strip AVW-14542-307 Concord Grape . . . . 2 strips	<b>Row 17:</b> Kona K001-136 Basil . . . . . 2 strips AVW-14542-34 Sage . . . . . 3 strips
<b>Row 9:</b> Kona K001-1083 Coffee . . . . . 2 strips AVW-14543-168 Cinnamon . . . . . 3 strips	<b>Row 18:</b> Kona K001-411 Leprechaun . . . 2 strips AVW-14543-310 Leapfrog . . . . . 1 strip AVW-14539-45 Moss . . . . . 2 strips
	<b>Row 19:</b> Kona K001-1239 Mushroom . . . . 2 strips AVW-14538-323 Walnut . . . . . 3 strips
	<b>You will also need:</b> 1 - 2 1/2" x 2 1/2" square of any color you choose for the center

## Cutting Instructions, continued...

1. From each fabric cut the number of 2 1/2" x 42" strips indicated on the cutting chart.
2. Lay out your strips, putting all the color families for each row together. You should have 5 strips in the same color family for each row. Mix up the colors within their separate rows/color families, i.e. Smoke, Coastal Fog, White, Smoke, Coastal Fog for Row 1. (Refer to cutting chart for color families.)

## Assembly Instructions

The strips will be sewn together in sections.

1. Starting with a strip from the Row 1 stack, and using one fabric from each of the 19 row stacks, lay them out in numerical order, then sew them together. **Figure 1.**

*Sewing Hints: To keep the strips from stretching and curving, sew the first two strips together from top to bottom.*

*Add the third strip, sewing from bottom to top.*

*Keep alternating directions.*

*Also, it is much easier to press after each addition of a strip.*

*Sometimes fabric strips are different lengths--*

*try to keep the selveges aligned evenly along one edge as you sew.*

*This will make it easier when you start to cut the rings.*

**Make sure you like the way the first strip looks with the very last strip, as they are eventually going to be side by side in the quilt.**

Press the seams in one direction.

*Pressing Hint: To encourage the seams to nest together, press all the seams in two of the units in one direction (toward strip #1), and press the seams in the other three units in the opposite direction (toward strip #19).*

Make a total of 5 of these units, the same as the first one.

2. Sew the first strip (#1) to the last strip (#19), making a tube. Press. **Figure 2.**

Turn your strip unit so the right side is facing the inside of the tube. The seams are on the outside.

Lay the tube flat on your cutting mat.

Cut the tube into 2 1/2" wide strips, making sure the fabrics line up on top of each other and they don't pull. Keeping the cutting edge even and cutting carefully, cut a total of 16 rings from each unit. **Figure 3.**

You need a total of 80 rings.

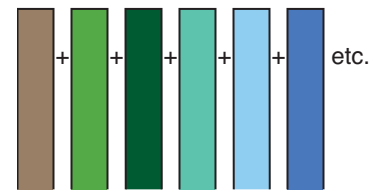


Figure 1

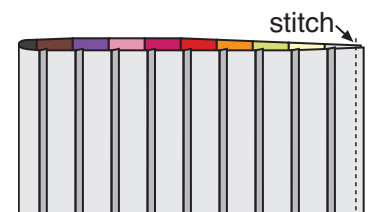


Figure 2

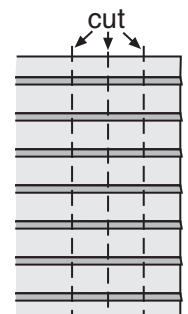
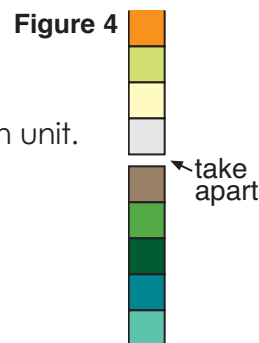


Figure 3

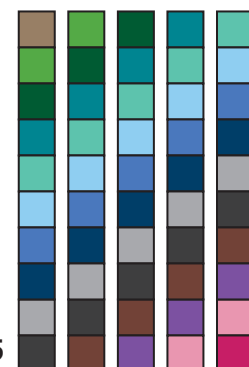
After cutting the rings, you should have enough fabric left in your scraps to cut a 2 1/2" x 2 1/2" square for the center.

3. Arrange one unit at a time on your design wall. You need a total of 19 rings for each unit. Taking one ring, find the fabric you designated as #1, and using your seam ripper, take apart the seam between #1 and #19. **Figure 4.**



Starting in the left-hand corner of your design wall, put the strip on the wall with #1 fabric at the top.

Using another ring, find the #2 fabric, take the seam apart between #1 and #2. Put the strip on your design wall, next to the first one with the #2 fabric at the top. You will be laying out the strips from left to right. **Figure 5.**



As you put the strips on the wall, try to have the first one with the seams pressed toward #1, the second with the seams pressed toward #19, and so on.

Continue this process for the remainder of the strips sewn for this first unit. Put each strip up as the seams are taken apart, creating diagonal rows of color across unit 1. Be sure to **keep them in numerical order** (with #1 at the top, then #2 at the top, #3, and so on).

**Figure 5**

Sew together in rows, starting with the first two strips and keeping the strips in order. Press.

4. Working one unit at a time, repeat step 3 for each unit.
5. Referring to the quilt illustration, lay out the finished sections. **Figure 6.**

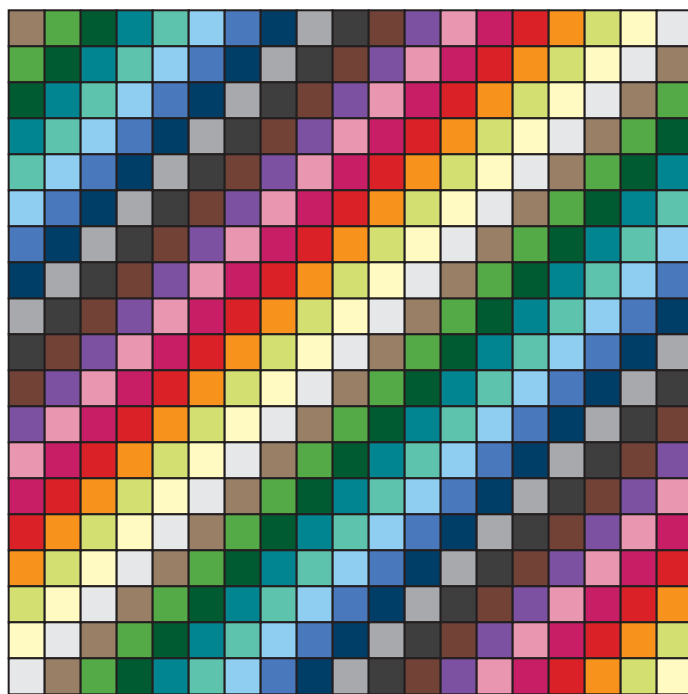
*Notice you need one more strip between unit #1 and unit #2 before you join these two units together.*

Using one of your leftover rings (you will have four), take the seam apart between fabric #1 and fabric #19.

Sew this between unit #1 and unit #2. Press.

Repeat for units #3 and #4.

6. The remaining two rings will join the top and the bottom sections together. Again, take the seams between #1 and #19 apart in both of the rings.



**Figure 6**

Sew the two rings to the 2 1/2" x 2 1/2" center square, making sure you sew the #19 fabric next to the center square.

**Figure 7.**

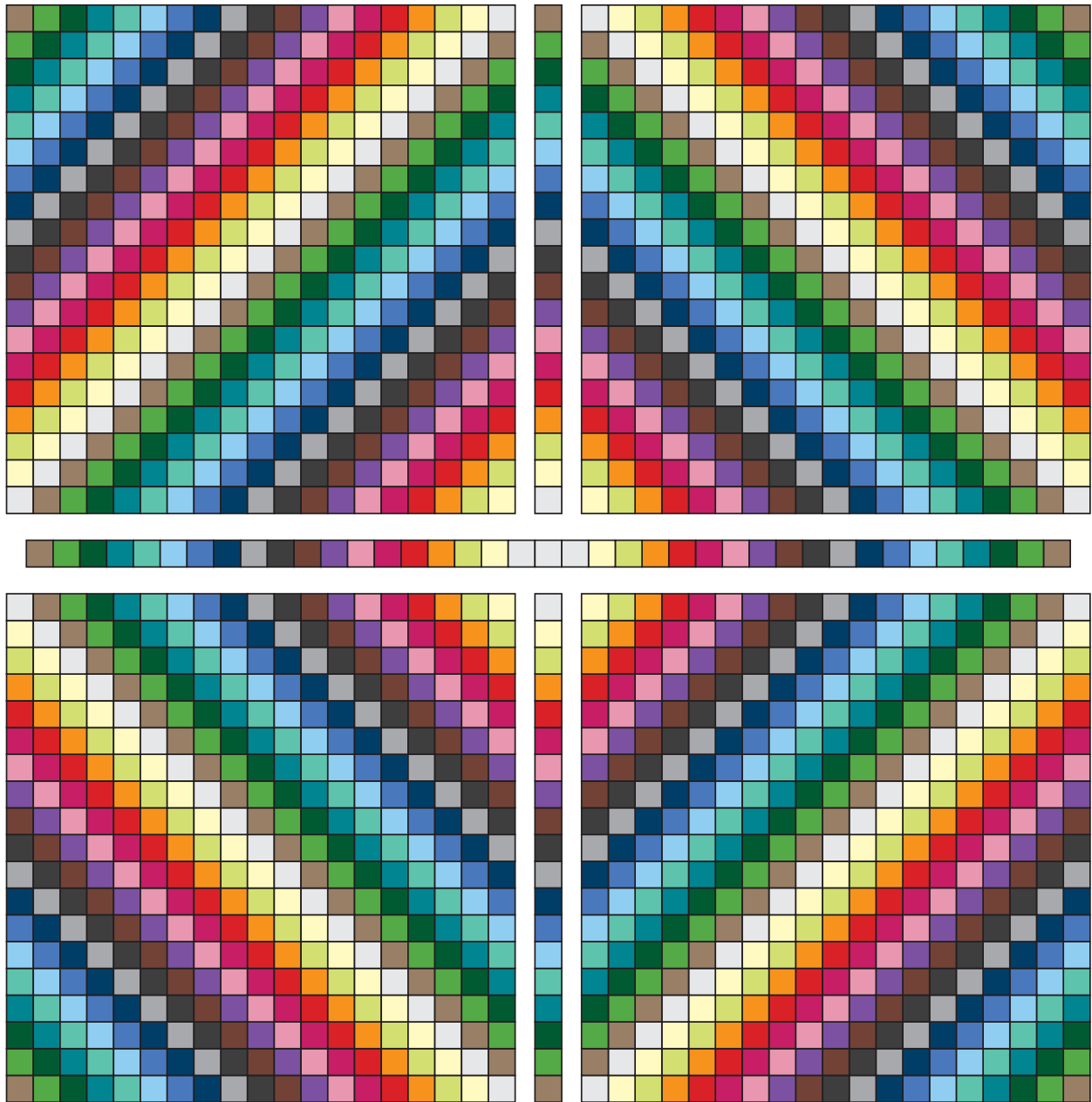


**Figure 7**

7. Sew the sections together. **Figure 8.** Press.

8. Layer, quilt, and finish the quilt.

*I quilted leaves, squiggles, and swirls diagonally around the quilt, following each band of color.*



**Figure 8 - Quilt Assembly Diagram**

*Note: Each color family is indicated by a single color on the diagram, even though there are two or three different fabrics in the family.*