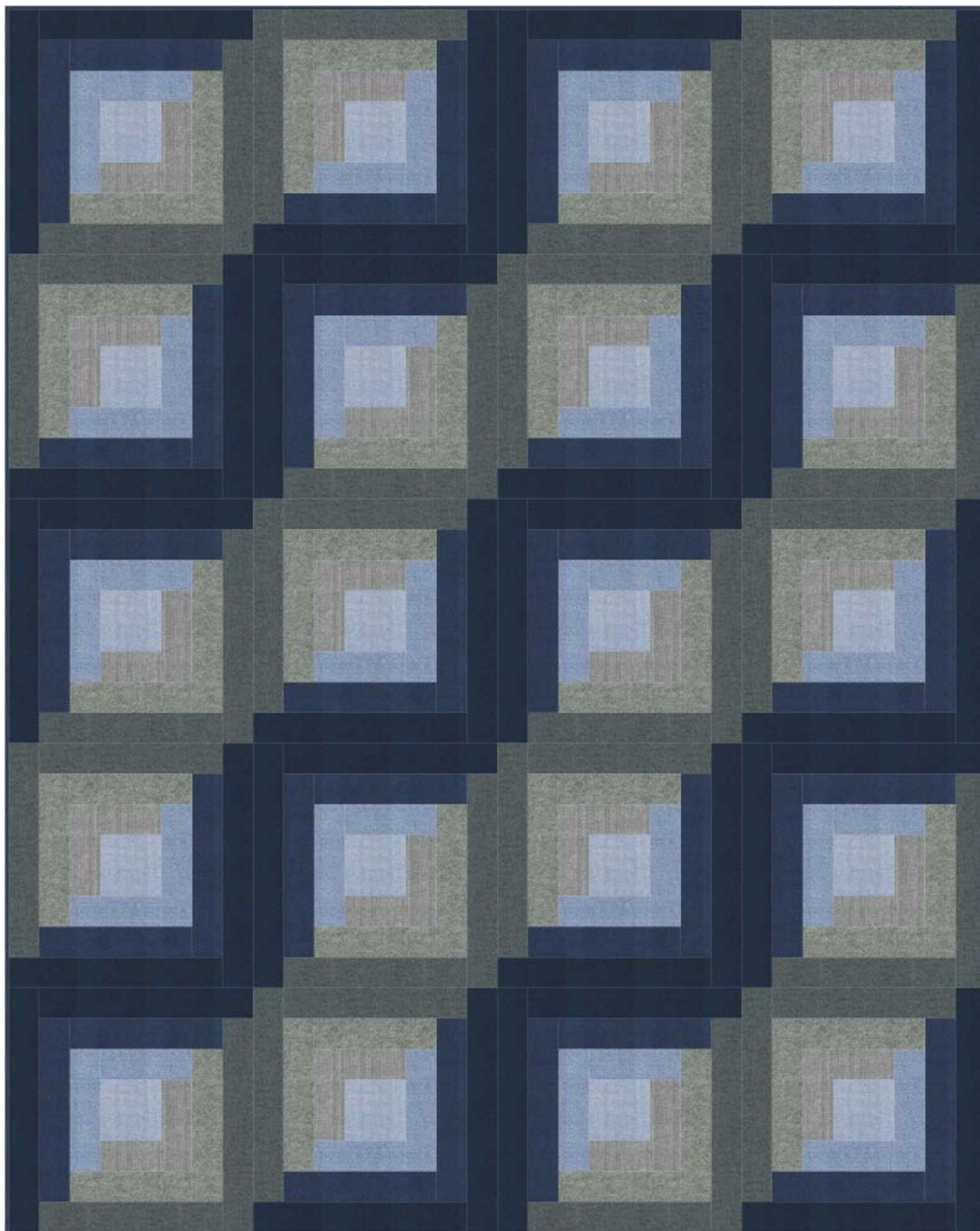


# CABIN TRAILS

Designed by Robert Kaufman Fabrics  
[www.robertkaufman.com](http://www.robertkaufman.com)

Featuring Shetland Flannel



Finished quilt measures: 64-1/2" x 80-1/2"  
Quilt shown in "GREY AND BLUE" colorstory.  
For alternate "RED AND TAN" colorstory see pages 6-7.

**Pattern Level: Enthusiastic Novice**

**"I am a total beginner and want to learn more!"**

**ROBERT KAUFMAN**  
F A B R I C S

*For questions about this pattern, please email [Patterns@RobertKaufman.com](mailto:Patterns@RobertKaufman.com).*

## Fabric and Supplies Needed

*Fabric amounts based on yardage that is 42" wide.*

Color	Fabric	Name/SKU	Yardage	Color	Fabric	Name/SKU	Yardage
	A	SRKF-13936-67 DENIM	1/2 yard		E	SRKF-13937-9 NAVY	1 yard
	B	SRKF-13936-12 GREY	5/8 yards		F	SRKF-13937-190 JET	1-1/3 yard
	C	SRKF-13937-67 DENIM	3/4 yard		G	SRKF-14770-9 NAVY	1-1/2 yard
	D	SRKF-13937-12 GREY	7/8 yard		Binding*	SRKF-13937-9 NAVY <i>*Also used for Fabric E</i>	5/8 yard
<p>Copyright 2017, Robert Kaufman For individual use only - Not for resale</p>				<p>You will also need: 5 yards for backing</p>			

### Notes Before You Begin

- Read through all of the instructions before beginning.
- All of the seam allowances are 1/4" unless otherwise noted.
- Press seam allowances open unless otherwise noted.
- Width of fabric (WOF) is equal to at least 42" wide.
- Right sides together has been abbreviated to RST.
- Remember to measure twice and cut once!

## Cutting Instructions

*Tip: For ease of piecing, stack the fabrics by piece number and label each stack. Example: "Piece 1", "Piece 2", etc.*

### **From Fabric A, cut:**

three 4-1/2" x WOF strips. Subcut:  
twenty 4-1/2" squares

### **From Fabric B, cut:**

seven 2-1/2" x WOF strips. Subcut:  
twenty 2-1/2" x 4-1/2" rectangles for piece 2  
twenty 2-1/2" x 6-1/2" rectangles for piece 3

### **From Fabric C, cut:**

nine 2-1/2" x WOF strips. Subcut:  
twenty 2-1/2" x 6-1/2" rectangles for piece 4  
twenty 2-1/2" x 8-1/2" rectangles for piece 5

### **From Fabric D, cut:**

ten 2-1/2" x WOF strips. Subcut:  
twenty 2-1/2" x 8-1/2" rectangles for piece 6  
twenty 2-1/2" x 10-1/2" rectangles for piece 7

### **From Fabric E, cut:**

eleven 2-1/2" x WOF strips. Subcut:  
twenty 2-1/2" x 10-1/2" rectangles for piece 8  
twenty 2-1/2" x 12-1/2" rectangles for piece 9

### **From Fabric F, cut:**

one 12-1/2" x WOF strip. Subcut:  
sixteen 2-1/2" x 12-1/2" rectangles for piece 10  
two 14-1/2" x WOF strips. Subcut:  
twenty 2-1/2" x 14-1/2" rectangles for piece 11  
Trim the remainder of the second strip to 12-1/2" wide and cut:  
four 2-1/2" x 12-1/2" rectangles for piece 10

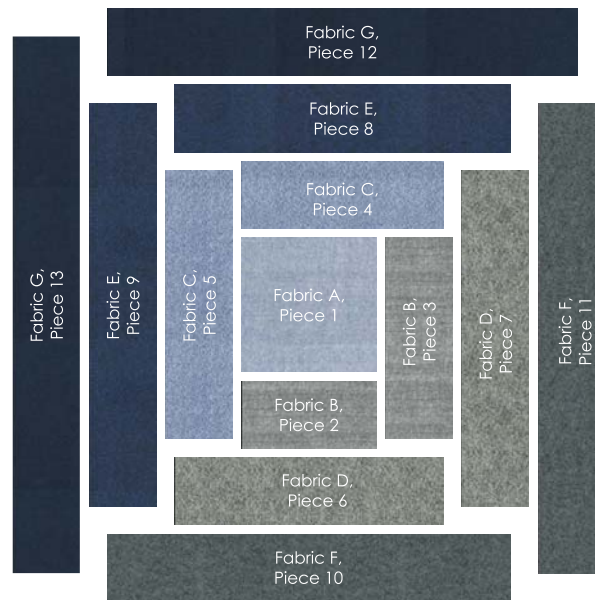
### **From Fabric G, cut:**

one 14-1/2" x WOF strip. Subcut:  
sixteen 2-1/2" x 14-1/2" rectangles for piece 12  
two 16-1/2" x WOF strips. Subcut:  
twenty 2-1/2" x 16-1/2" rectangles for piece 13  
Trim the remainder of the second strip to 14-1/2" wide and cut:  
four 2-1/2" x 14-1/2" rectangles for piece 12

### **From the binding fabric, cut:**

eight 2-1/2" x WOF strips

## Assemble the Blocks



Pressing note: Press all seams away from the center square.

**Step 1:** Sew a Fabric B, Piece 2 rectangle to the bottom edge of a Fabric A, Piece 1 square. Press.

**Step 2:** Sew a Fabric B, Piece 3 rectangle to the right edge of the Fabric A, Piece 1 square. Press.

**Step 3:** Sew a Fabric C, Piece 4 rectangle to the top edge of the Fabric A, Piece 1 square. Press.

**Step 4:** Sew a Fabric C, Piece 5 rectangle to the left edge of the Fabric A, Piece 1 square. Press.

**Step 5:** Sew a Fabric D, Piece 6 rectangle to the bottom edge of the the block. Press.

**Step 6:** Sew a Fabric D, Piece 7 rectangle to the right edge of the the block. Press.

**Step 7:** Sew a Fabric E, Piece 8 rectangle to the top edge of the the block. Press.

**Step 8:** Sew a Fabric E, Piece 9 rectangle to the left edge of the the block. Press.

**Step 9:** Sew a Fabric F, Piece 10 rectangle to the bottom edge of the the block. Press.

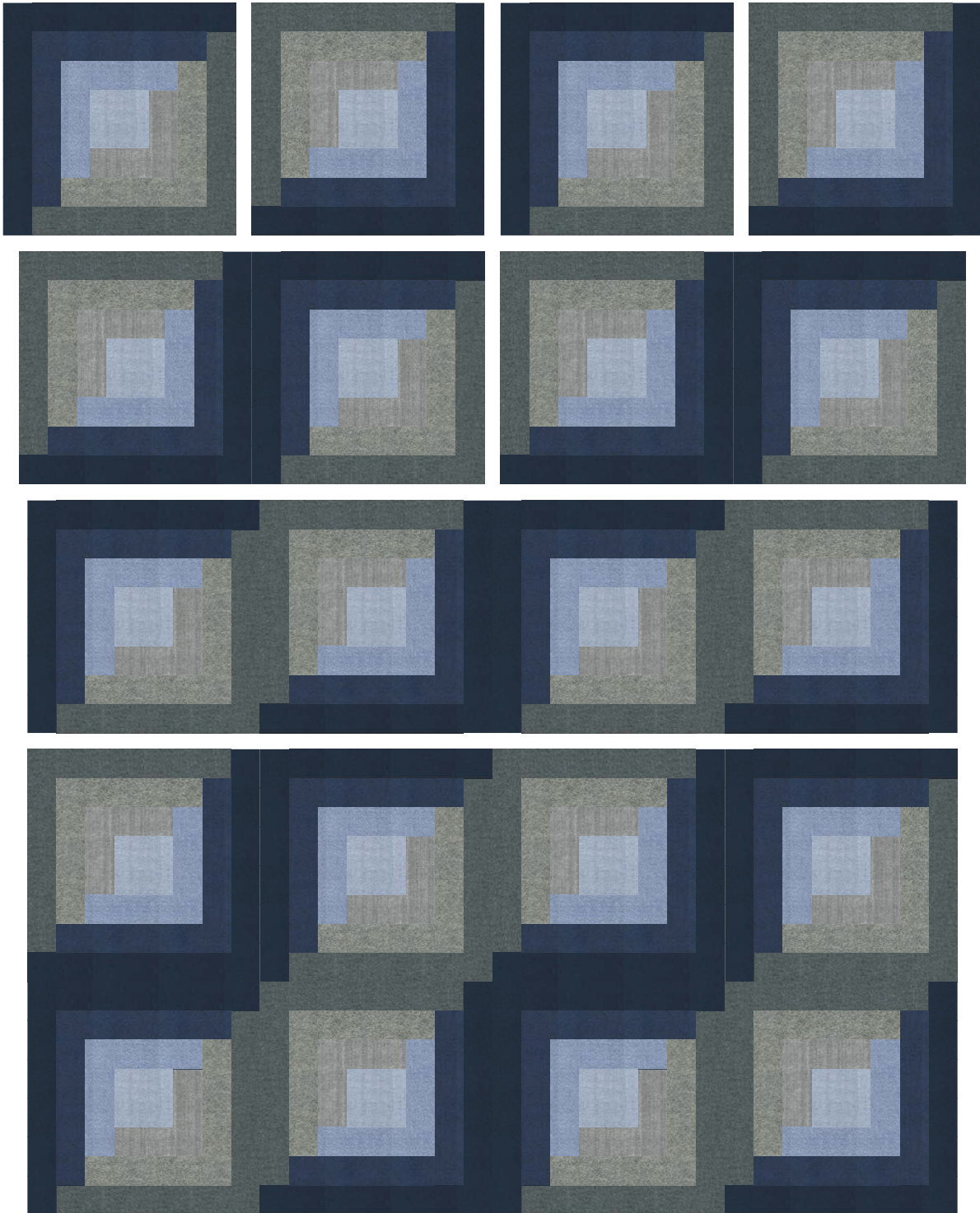
**Step 10:** Sew a Fabric F, Piece 11 rectangle to the right edge of the the block. Press.

**Step 11:** Sew a Fabric G, Piece 12 rectangle to the top edge of the the block. Press.

**Step 12:** Sew a Fabric G, Piece 13 rectangle to the left edge of the the block. Press.

The resulting block should measure 16-1/2" square. Repeat Steps 1-12 to make a total of twenty blocks.

## Assemble the Quilt



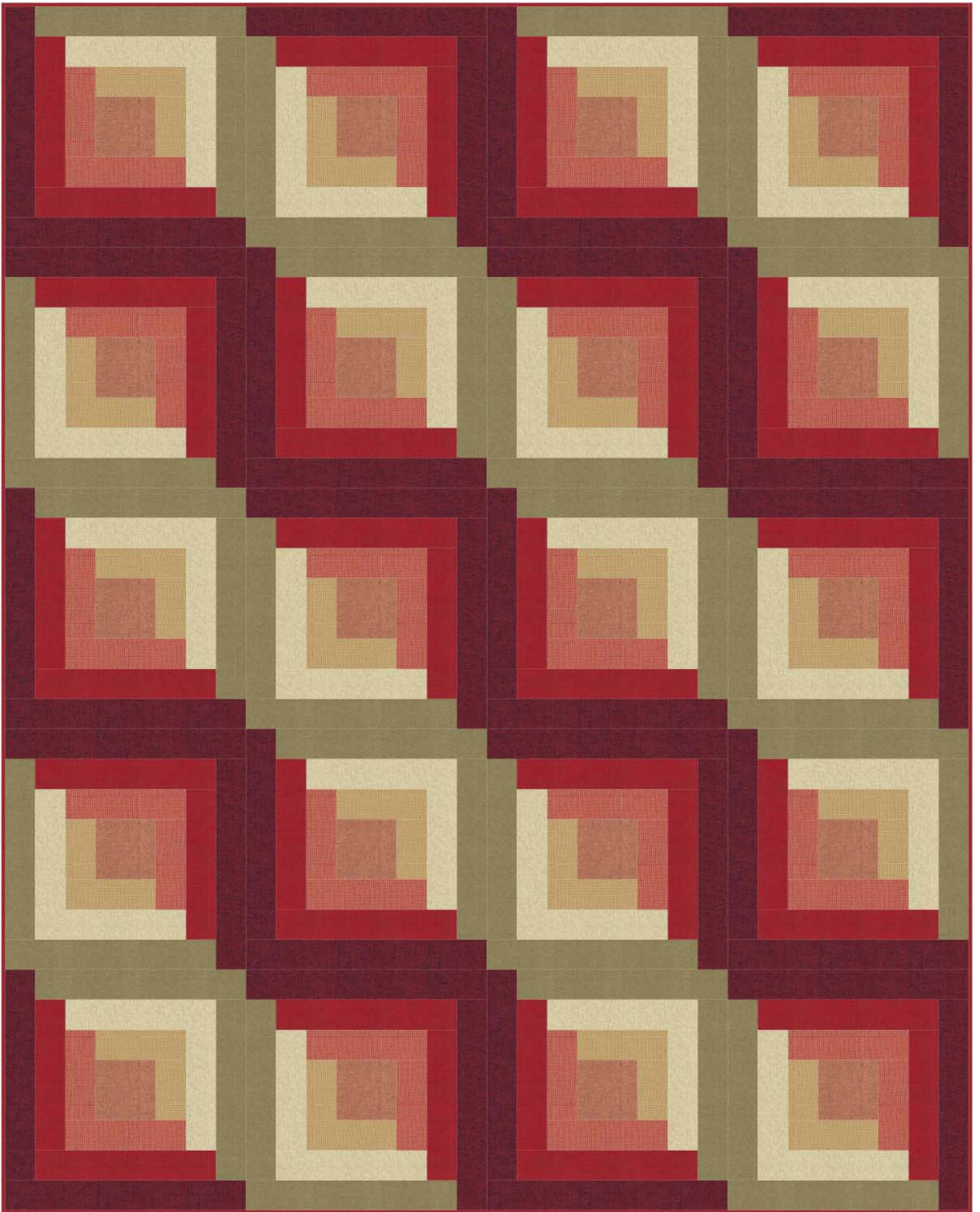
**Step 13:** Arrange the blocks into five rows of four blocks. Note the fabric placement and block orientation in the Quilt Assembly Diagram.

**Step 14:** Sew the blocks together to form rows. Press the rows to the left in the odd numbered rows and to the right in the even numbered rows.

**Step 15:** Sew the rows together to form the quilt center. Press the row seams open.

Your quilt top is now complete! Baste, quilt, bind and enjoy!









CABIN TRAILS - Red and Tan Colorstory



# CABIN TRAILS - Red and Tan Colorstory

## Fabric and Supplies Needed

*Fabric amounts based on yardage that is 42" wide.*

Color	Fabric	Name/SKU	Yardage	Color	Fabric	Name/SKU	Yardage
	A	SRKF-15616-342 CHESTNUT	1/2 yard		E	SRKF-15617-3 RED	1 yard
	B	SRKF-14769-13 TAN	5/8 yards		F	SRKF-15611-34 SAGE	1-1/3 yard
	C	SRKF-14769-3 RED	3/4 yard		G	SRKF-13936-222 REDWOOD	1-1/2 yard
	D	SRKF-15610-58 CACTUS	7/8 yard		Binding*	SRKF-15617-3 RED	5/8 yard
<p>Copyright 2017, Robert Kaufman For individual use only - Not for resale</p>				<p>You will also need: 5 yards for backing</p>			