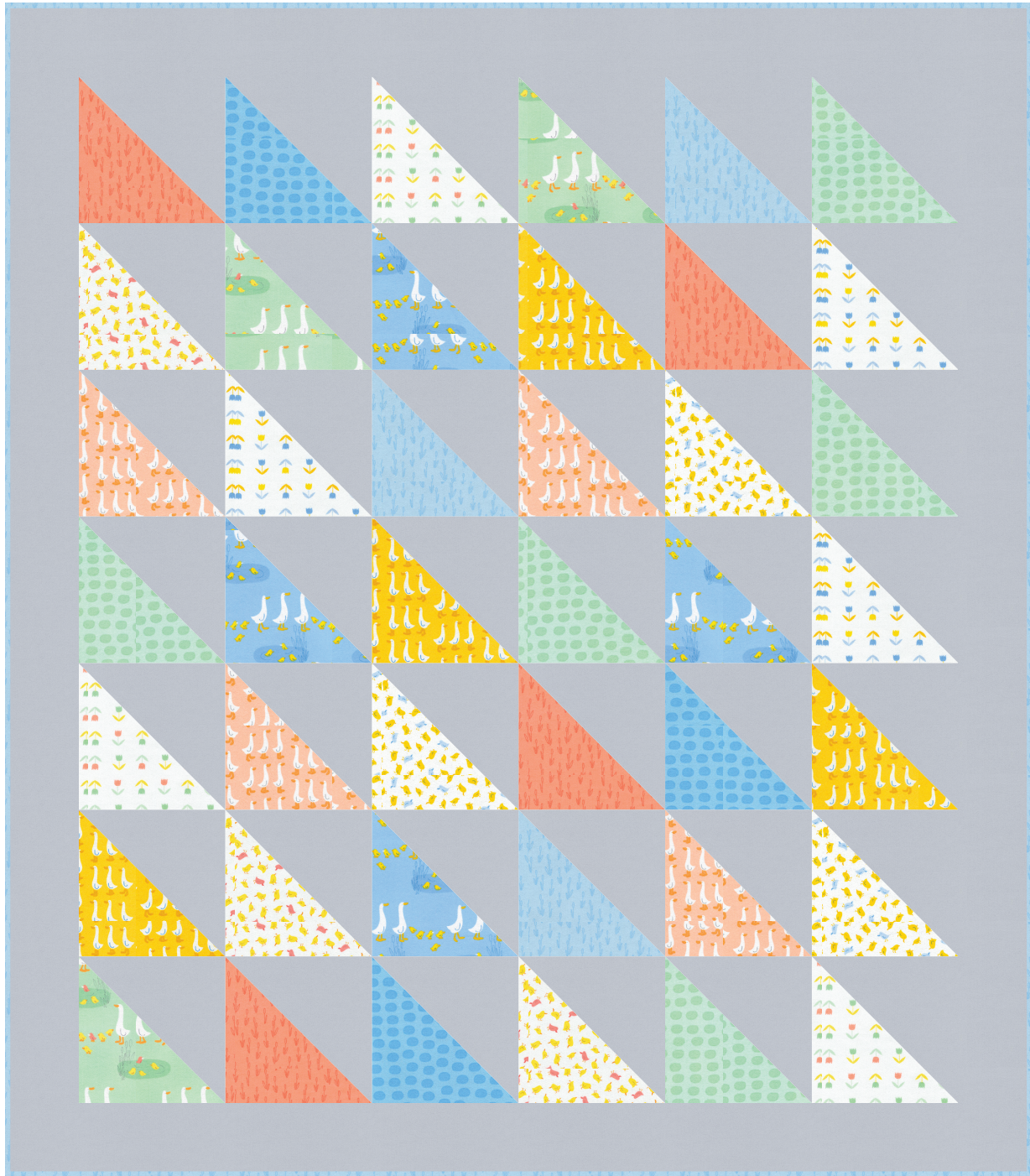


BABY GEESE

Designed by Ariga Mahmoudlou for RK Featuring
www.robertkaufman.com

Goose Pond



Finished quilt measures: 42" x 48"

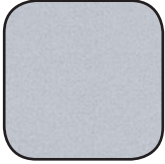










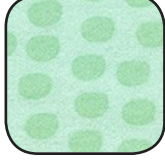


Difficulty Rating: **Beginner**

ROBERTKAUFMAN
F A B R I C S

For questions about this pattern, please email Patterns@RobertKaufman.com.

Fabric and Supplies Needed

Fabric amounts based on yardage that is 42" wide.

Color	Fabric	Name/SKU	Yardage	Color	Fabric	Name/SKU	Yardage
	A	F019-959 DOLPHIN	1-7/8 yards		H	AZVF-18369-269 PARK	1/4 yard
	B	AZVF-18366-269 PARK	1/4 yard		I	AZVF-18369-287 SWEET	1/4 yard
	C	AZVF-18366-287 SWEET	1/4 yard		J	AZVF-18370-269 PARK	1/4 yard
	D	AZVF-18367-269 PARK	1/4 yard		K	AZVF-18370-287 SWEET	1/4 yard
	E	AZVF-18367-287 SWEET	1/4 yard		L	AZVF-18371-269 PARK	1/4 yard
	F	AZVF-18368-269 PARK	1/4 yard		M	AZVF-18371-287 SWEET	1/4 yard
	G	AZVF-18368-287 SWEET	1/4 yard		Binding*	AZVF-18370-269 PARK <i>*Also used for Fabric J</i>	1/2 yard

Copyright 2019, Robert Kaufman
For individual use only - Not for resale

You will also need:
3 yards for backing

Notes Before You Begin

- Read through all of the instructions before beginning.
- All of the seam allowances are 1/4" unless otherwise noted.
- Press seam allowances open unless otherwise noted.
- Width of fabric (WOF) is equal to at least 42" wide.
- Right sides together has been abbreviated to RST.
- Remember to measure twice and cut once!

Cutting Instructions

From Fabric A, cut:

six 7" x WOF strips. Subcut:

thirty-two 7" squares for the HSTs

five 3-1/2" x WOF strips. Sew together, end-to-end, then subcut:

two 3-1/2" x 36-1/2" top/bottom outer borders

two 3-1/2" x 48-1/2" side outer borders

From each of Fabrics B, D, E and K cut:

one 7" x WOF strip. Subcut:

four 7" squares for the HSTs

From each of Fabrics C, J and M, cut:

one 7" x WOF strip. Subcut:

three 7" squares for the HSTs

From each of Fabrics F-I and L, cut:

one 7" x WOF strip. Subcut:

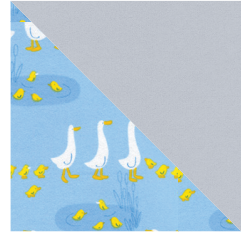
two 7" squares for the HSTs

From the Binding Fabric, cut:

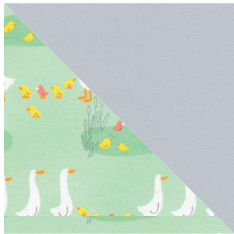
five 2-1/2" x WOF strips

Assemble the Half-Square Triangles (HSTs)

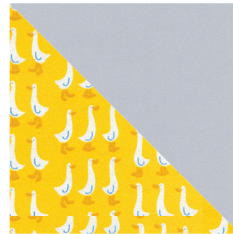
Step 1: Pair a Fabric A square with a Fabric B square, RST. Mark a diagonal line on the wrong side of one square. Sew 1/4" away from both sides of the marked line. Cut on the marked line, creating two half-square triangles (HSTs). Press toward the darker fabric. Trim to 6-1/2" square. Repeat to make eight A/B HSTs. Select the four that match the orientation shown in the finished quilt. Set the remaining HSTs aside for use in another project.



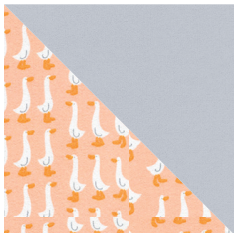
Step 2: Repeat Step 1 to make:



six A/C HSTs
(select the three that match the orientation shown in the quilt)



eight A/D HSTs (select the four that match the orientation shown in the quilt)



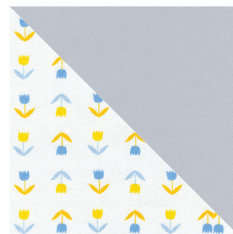
eight A/E HSTs (select the four that match the orientation shown in the quilt)



three A/F HSTs (set aside the 4th HST. It will not be used)



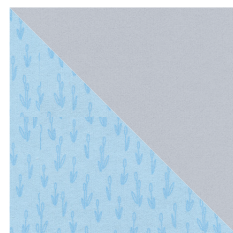
three A/G HSTs (set aside the 4th HST. It will not be used)



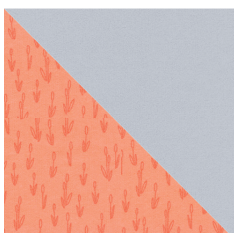
three A/H HSTs (set aside the 4th HST. It will not be used)



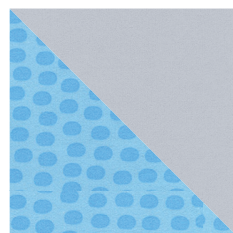
three A/I HSTs (set aside the 4th HST. It will not be used)



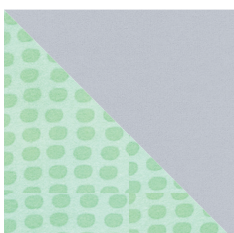
six A/J HSTs
(select the three that match the orientation shown in the quilt)



eight A/K HSTs
(select the four that match the orientation shown in the quilt)

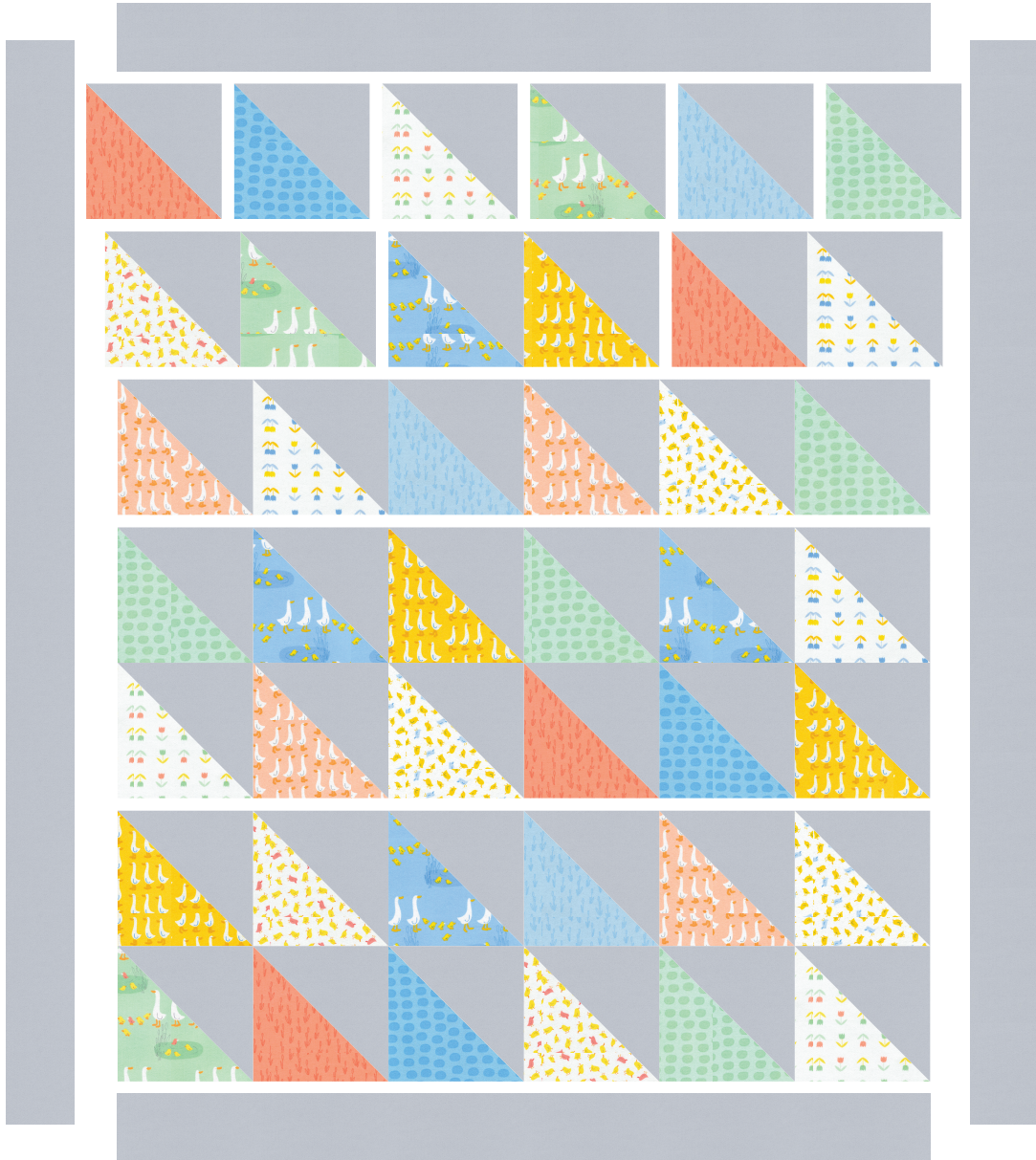


three A/L HSTs (set aside the 4th HST. It will not be used)



five A/M HSTs (set aside the 6th HST. It will not be used)

Assemble the Quilt



Step 3: Arrange the blocks into seven rows of six blocks. Note the fabric placement and block orientation in the Quilt Assembly Diagram.

Step 4: Sew the blocks together to form rows. Press the rows to the left in the odd numbered rows and to the right in the even numbered rows.

Step 5: Sew the rows together to form the quilt center. Press the row seams open.

Step 6: Sew the top and bottom outer borders to the quilt center. Press toward the borders. Sew the side outer borders to the sides of the quilt center. Press toward the borders.

Your quilt top is complete. Baste, quilt, bind and enjoy!

This pattern may be used for personal purposes only and may not be reproduced in any form without the express permission from Robert Kaufman Fabrics. This pattern is not for resale. All patterns, unless otherwise attributed, are © Robert Kaufman Co., Inc. 2005-2018. All rights reserved.