

HOLIDAY GALA WALL HANGING

Designed by Ariga Wilson for RK
www.robertkaufman.com

Featuring *Holiday Charms*



Finished quilt measures: 38" x 43-1/2"















Difficulty Rating: **Beginner**

ROBERTKAUFMAN
F A B R I C S

For questions about this pattern, please email Patterns@RobertKaufman.com.

Fabric and Supplies Needed

Fabric amounts based on yardage that is 42" wide.

Color	Fabric	Name/SKU	Yardage	Color	Fabric	Name/SKU	Yardage
	A	K001-1387 WHITE	1-1/3 yards		H	SRKM-19949-3 RED	1/8 yard
	B	SRKM-19950-3 RED	1/8 yard		I	SRKM-19950-7 GREEN	1/4 yard
	C	SRKM-19952-7 GREEN	1/4 yard		J	SRKM-19948-3 RED	1/2 yard
	D	SRKM-19926-2 BLACK	1/8 yard		K	SRKM-19954-91 CRIMSON	1/4 yard
	E	SRKM-19952-3 RED	1/8 yard		L	SRKM-19948-223 HOLIDAY	1/8 yard
	F	SRKM-19954-7 GREEN	1/3 yard		M	SRKM-19948-2 BLACK	1/8 yard
	G	SRKM-19952-2 BLACK	1/8 yard		Binding*	SRKM-19954-91 CRIMSON	3/8 yard
<p>Copyright 2021, Robert Kaufman For individual use only - Not for resale</p>				<p>You will also need: 2-5/8 yards for backing</p>			

**Also used for Fabric K*

Notes Before You Begin

- Read through all of the instructions before beginning.
- All of the seam allowances are 1/4" unless otherwise noted.
- Press seam allowances open unless otherwise noted.
- Width of fabric (WOF) is equal to at least 42" wide.
- Right sides together has been abbreviated to RST.
- Remember to measure twice and cut once!

Cutting Instructions

Tip: Label six stacks: Wreath, Tree, Heart, Candy Cane, Star and Ornament. As you cut, place the cut pieces in these stacks to help organize for piecing.

From Fabric A, cut:

one 3-1/2" x WOF strip. Subcut:

ten 3-1/2" squares for the Candy Cane Blocks

eight 2-1/2" x WOF strips. Subcut:

two 2-1/2" x 32-1/2" top/bottom inner borders

two 2-1/2" x 34" side inner borders

four 2-1/2" x 5-1/2" rectangles for the Wreath Block sashing

three 2-1/2" x 5-1/2" rectangles for the Tree Block sashing

ten 2-1/2" squares for the Heart Blocks

four 2-1/2" x 4-1/2" rectangles for the Heart Block sashing

four 2-1/2" x 6-1/2" rectangles for the Candy Cane Block sashing

four 2-1/2" x 4-1/2" rectangles for the Star Block sashing

four 2-1/2" x 5" rectangles for the Ornament Block sashing

two 2" x WOF strips. Subcut:

five 2" squares for the Wreath Block HSTs

twenty 2" squares for the Star Block HSTs

thirteen 1-1/2" x WOF strips. Subcut:

five 1-1/2" x 28-1/2" row sashing strips

fifty 1-1/2" squares for the Wreath Blocks

eight 1-1/2" x 2-3/4" rectangles for the Tree Blocks

forty 1-1/2" squares for the Tree Blocks

two 1-1/2" x 5-1/2" rectangles for the Tree Block end sashing

eight 1-1/2" x 1" rectangles for the Tree Blocks

eight 1-1/2" x 2" rectangles for the Tree Blocks

twenty 1-1/2" squares for the Heart Blocks

twenty-five 1-1/2" squares for the Candy Cane Blocks

twenty 1-1/2" squares for the Star Blocks

ten 1" x 1-1/2" rectangles for the Ornament Blocks

twenty 1-1/2" squares for the Ornament Blocks

From Fabric B, cut:

one 2-1/2" x WOF strip. Subcut:

twelve 2-1/2" squares for the Wreath Blocks

From Fabric C, cut:

one 2" x WOF strip. Subcut:
three 2" squares for the Wreath Block HSTs.

one 1-1/2" x WOF strip. Subcut:
two 1-1/2" x 5-1/2" rectangles for the Tree Blocks
two 1-1/2" x 4-1/2" rectangles for the Tree Blocks
two 1-1/2" x 3-1/2" rectangles for the Tree Blocks
two 1-1/2" x 2-1/2" rectangles for the Tree Blocks

one 1" x WOF strip. Subcut:
three 1" x 4-1/2" rectangle for the Ornament Blocks

From Fabric D, cut:

one 2-1/2" x WOF strip. Subcut:
eight 2-1/2" squares for the Wreath Block HSTs

From Fabric E, cut:

one 2" x WOF strip. Subcut:
two 2" squares for the Wreath Block HSTs
Trim the remainder of the strip to 1" wide, then subcut:
two 1" x 4-1/2" rectangles for the Ornament Blocks

From Fabric F, cut:

one 2-1/4" x WOF strips. Subcut:
four 2-1/4" x 4-1/2" rectangles for the Ornament Blocks

five 1-1/2" x WOF strip. Subcut:
two 1-1/2" x 38-1/2" top/bottom middle borders
two 1-1/2" x 34" side middle borders
two 1-1/2" x 5-1/2" rectangles for the Tree Blocks
two 1-1/2" x 4-1/2" rectangles for the Tree Blocks
two 1-1/2" x 3-1/2" rectangles for the Tree Blocks
two 1-1/2" x 2-1/2" rectangles for the Tree Blocks

From Fabric G, cut:

one 1" x WOF strip. Subcut:
four 1" x 1-1/2" rectangles for the Tree Blocks
five 1" x 2-1/2" rectangles for the Ornament Blocks

From Fabric H, cut:

one 3-1/2" x WOF strip. Subcut:
three 3-1/2" x 4-1/2" rectangles for the Heart Blocks
trim the remainder of the strip to 2-1/2" wide, then subcut:
six 1-1/2" x 2-1/2" rectangles for the Heart Blocks

From Fabric I, cut:

one 3-1/2" x WOF strip. Subcut:

two 3-1/2" x 4-1/2" rectangles for the Heart Blocks
trim the remainder of the strip to 2-1/2" wide, then subcut:
four 1-1/2" x 2-1/2" rectangles for the Heart Blocks

one 2-1/2" x WOF strip. Subcut:

three 2-1/2" squares for the Star Blocks
Trim the remainder of the strip to 2" wide, then subcut:
twelve 2" squares for the Star Blocks HSTs

From Fabric J, cut:

one 4-1/2" x WOF strip. Subcut:

three 4-1/2" squares for the Candy Candy Blocks
Trim the remainder of the strip to 2-1/2" wide, then subcut:
six 2-1/2" squares for the Candy Cane Blocks

four 2-1/2" x WOF strips. Subcut:

two 2-1/2" x 38-1/2" top/bottom outer borders
two 2-1/2" x 40" side outer borders

From Fabric K, cut:

one 4-1/2" x WOF strip. Subcut:

two 4-1/2" squares for the Candy Candy Blocks
Trim the remainder of the strip to 2-1/2" wide, then subcut:
four 2-1/2" squares for the Candy Cane Blocks

From Fabric L, cut:

one 2-1/2" x WOF strip. Subcut:

two 2-1/2" squares for the Star Blocks
Trim the remainder of the strip to 2" wide, then subcut:
eight 2" squares for the Star Blocks HSTs

From Fabric M, cut:

one 2-1/4" x WOF strips. Subcut:

six 2-1/4" x 4-1/2" rectangles for the Ornament Blocks

From the Binding Fabric, cut:

five 2-1/2" x WOF strips

Assemble the Wreath Blocks

Prep: Mark a diagonal line on the wrong side of forty 1-1/2" Fabric A squares.



Step 1: Pair a 2" Fabric A square with a 2" Fabric C square, RST. Mark a diagonal line on the wrong side of one square. Sew 1/4" away from both sides of the marked line. Cut on the marked line, creating two half-square triangles (HSTs). Press toward the darker fabric. Trim to 1-1/2" square. Repeat to make six A/C HSTs and four A/E HSTs.



Step 2: Place a 1-1/2" Fabric A square in the upper right corner of a 2-1/2" Fabric B square, right sides together. Note the orientation of the marked diagonal line. Sew on the marked line, then trim away the excess fabric, leaving a 1/4" seam allowance. Press.



Repeat on the lower left corner with another 1-1/2" Fabric A square. Repeat to make twelve B/A units and eight D/A units.



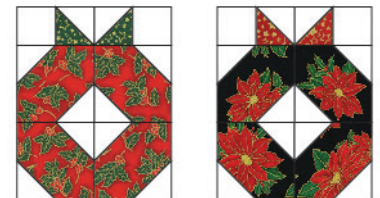
Step 3: Gather:

four B/A units from Step 2
two A/C HSTs from Step 1
two 1-1/2" Fabric A squares

Arrange the units into rows. Note the fabric placement and block orientation in the Block Assembly Diagram.

Step 4: Sew the squares together to form the rows. Press the seams in opposite directions every other row.

Step 5: Sew the rows together, nesting the seams and pressing the seams to one side to form the block.



The resulting Wreath Block should measure 4-1/2" x 5-1/2". Repeat to make three B/C Wreath Blocks and two D/E Wreath Blocks.

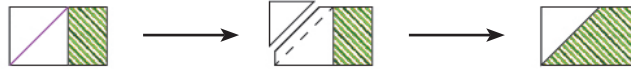
Sew the five Wreath Blocks and four 2-1/2" x 5-1/2" Fabric A Wreath sashing pieces together to form the Wreath Row (Row 1). Press.



Assemble the Tree Blocks

Prep: Mark a diagonal line on the wrong side of thirty-two 1-1/2" Fabric A squares.

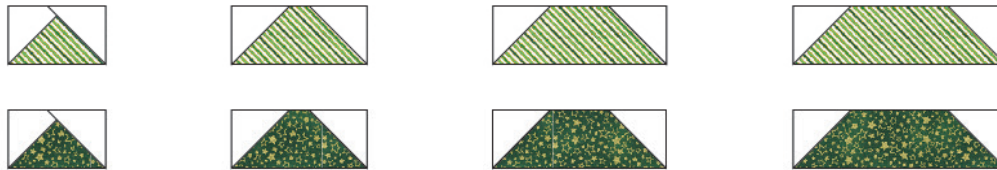
Step 6: Place a 1-1/2" Fabric A square at one end of a 1-1/2" x 2-1/2" Fabric F rectangle, right sides together. Note the orientation of the marked diagonal line. Sew on the marked line, then trim away the excess fabric, leaving a 1/4" seam allowance. Press.



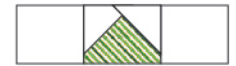
Repeat on the opposite end of the rectangle with another 1-1/2" Fabric A square.



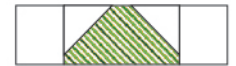
Repeat for all 2-1/2", 3-1/2", 4-1/2" and 5-1/2" rectangles for the Tree Blocks.



Step 7: Sew a 1-1/2" x 2" Fabric A rectangle to both sides of the 2-1/2" Step 6 units. Press.



Step 8: Sew a 1-1/2" Fabric A square to both sides of the 3-1/2" Step 6 units. Press.



Step 9: Sew a 1-1/2" x 1" Fabric A rectangle to both sides of the 4-1/2" Step 6 units. Press.



Step 10: Sew a 1-1/2" x 2-3/4" Fabric A rectangle to both sides of the 1" x 1-1/2" Fabric G rectangles. Press.

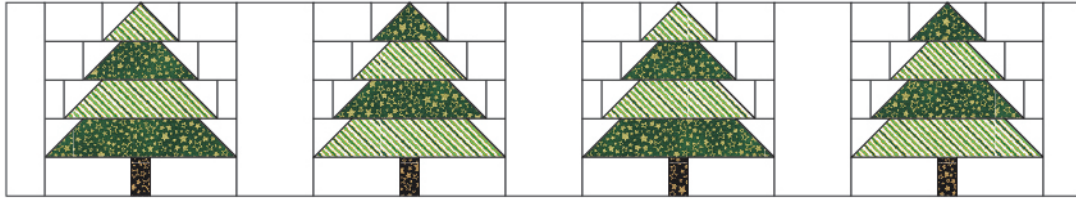


Step 11: Arrange the units into five rows, as shown. Note the fabric placement and block orientation in the Block Assembly Diagram.

Step 12: Sew the rows together, pressing the seams to one side to form the block.

The resulting Tree Block should measure 5-1/2" square. Repeat to make a total of four Tree Blocks, noting the fabric placement in the Quilt Assembly Diagram.

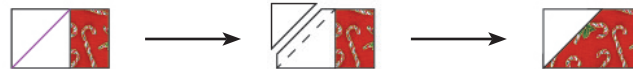
Sew the five Tree Blocks together with, two 1-1/2" x 5-1/2" Fabric A rectangles and three 2-1/2" x 5-1/2" Fabric A Tree sashing pieces to form the Tree Row (Row 2). Press.



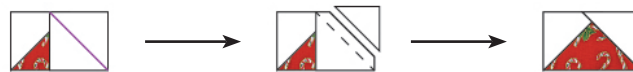
Assemble the Heart Blocks

Prep: Mark a diagonal line on the wrong side of twenty 1-1/2" Fabric A squares and ten of the 2-1/2" Fabric A squares.

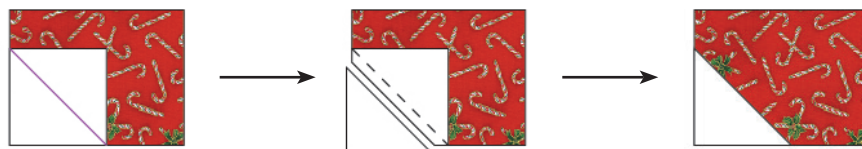
Step 13: Place a 1-1/2" Fabric A square at one end of a 1-1/2" x 2-1/2" Fabric H rectangle, right sides together. Note the orientation of the marked diagonal line. Sew on the marked line, then trim away the excess fabric, leaving a 1/4" seam allowance. Press.



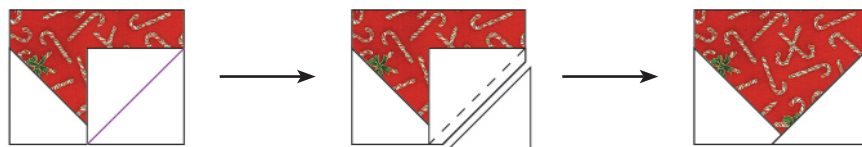
Repeat on the opposite end of the rectangle with another 1-1/2" Fabric A square. Repeat with all ten of the 1-1/2" x 2-1/2" Fabric H and I rectangles for the Heart Blocks.



Step 14: Place a 2-1/2" Fabric A square in the lower left corner of a 3-1/2" x 4-1/2" Fabric H rectangle, right sides together. Note the orientation of the marked diagonal line. Sew on the marked line, then trim away the excess fabric, leaving a 1/4" seam allowance. Press.



Repeat on the lower right corner of the rectangle with another 2-1/2" Fabric A square. Repeat with all five of the 3-1/2" x 4-1/2" Fabric H and I rectangles for the Heart Blocks.



Step 15: Arrange the units into two rows, as shown. Note the fabric placement and block orientation in the Block Assembly Diagram. Sew the top two units together to form a row. Press.

Step 16: Sew the rows together, pressing the seams to one side to form the block.

The resulting Heart Block should measure 4-1/2" square. Repeat to make a total of five Heart Blocks, noting the fabric placement in the Quilt Assembly Diagram.

Sew the five Heart Blocks and four 2-1/2" x 4-1/2" Fabric A Heart sashing pieces together to form the Heart Row (Row 3). Press.



Assemble the Candy Cane Blocks

Prep: Mark a diagonal line on the wrong side of twenty-five 1-1/2" Fabric A squares and ten 3-1/2" Fabric A squares.

Step 17: Place a 1-1/2" Fabric A square in the upper left corner of a 2-1/2" Fabric J square, right sides together. Note the orientation of the marked diagonal line. Sew on the marked line, then trim away the excess fabric, leaving a 1/4" seam allowance. Press.



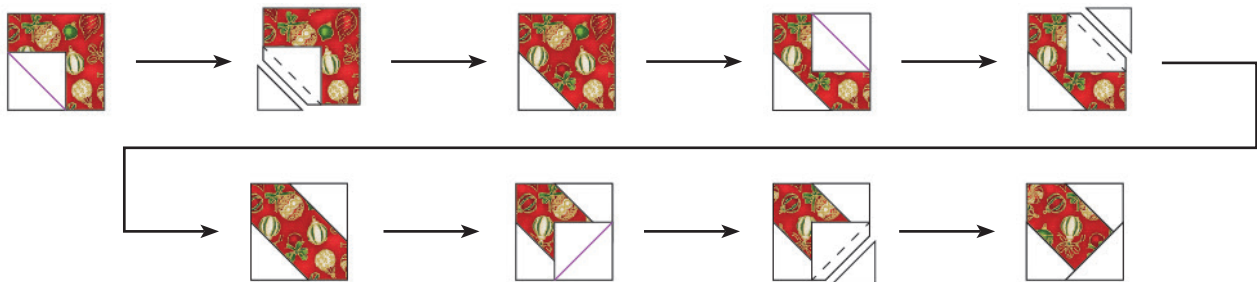
Repeat on the lower right corner with another 1-1/2" Fabric A square.



Repeat to make three J/A units and two K/A units, noting the orientation of the stripe in the Fabric K piece.



Step 18: Repeat Step 17 with a Fabric J square, this time adding a 1-1/2" Fabric A square to the lower right corner. Note the difference in Fabric A placements between Steps 17 and 18.



Repeat to make three units from Fabric J and two from Fabric K, again noting the orientation of the stripe in the Fabric K unit.



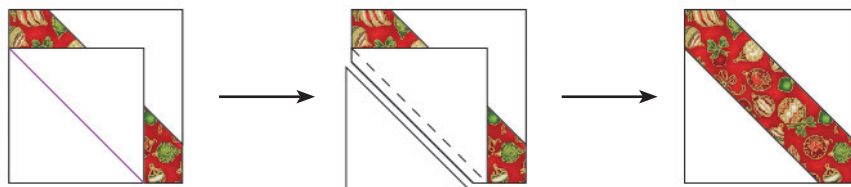
Step 19: Sew a Fabric J Step 17 and Step 18 unit together. Press. Repeat to make three units from Fabric J and two units from Fabric K, noting the orientation of the stripe shown.



Step 20: Place a 3-1/2" Fabric A square in the upper right corner of a 4-1/2" Fabric J square, right sides together. Note the orientation of the marked diagonal line. Sew on the marked line, then trim away the excess fabric, leaving a 1/4" seam allowance. Press.



Repeat on the lower left corner with another 3-1/2" Fabric A square.



Repeat to make three J/A units and two K/A units, noting the orientation of the strip in the Fabric K piece.



Step 21: Arrange the units into two rows, as shown. Note the fabric placement and block orientation in the Block Assembly Diagram.

Step 22: Sew the rows together, pressing the seam to one side to form the block.

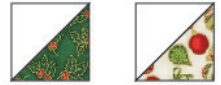
The resulting Candy Cane Block should measure 4-1/2" x 6-1/2". Repeat to make a total of five Candy Cane Blocks, noting the fabric placement in the Quilt Assembly Diagram.

Sew the five Candy Cane Blocks and four 2-1/2" x 6-1/2" Fabric A Candy Cane sashing pieces together to form the Candy Cane Row (Row 4). Press.

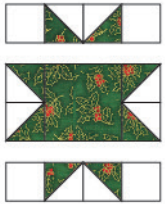
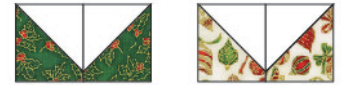


Assemble the Star Blocks

Step 23: Pair a 2" Fabric A square with a 2" Fabric I square, RST. Mark a diagonal line on the wrong side of one square. Sew 1/4" away from both sides of the marked line. Cut on the marked line, creating two half-square triangles (HSTs). Press toward the darker fabric. Trim to 1-1/2" square. Repeat to make twenty-four A/I HSTs and sixteen A/L HSTs.



Step 24: Sew two matching HSTs together, as shown, noting the orientation of the units. Repeat to make twelve HST pairs from Fabric I and eight HST pairs from Fabric L. Press.



Step 25: Gather:
 one 2-1/2" Fabric I square
 four Fabric A/I HST pairs
 four 1-1/2" Fabric A squares

Arrange the units into three rows of three, as shown. Note the fabric placement and block orientation in the Block Assembly Diagram. Sew together to form rows, pressing the seams in opposite directions every other row.

Step 26: Sew the rows together, nesting the seams and pressing the row seams to one side to form the block.



The resulting Star Block should measure 4-1/2". Repeat to make a total of five Star Blocks, three from Fabric I and two from Fabric L.

Sew five Star Blocks and four 2-1/2" x 4-1/2" Fabric A Star Block sashing pieces together to form the Star Row (Row 5). Press.



Assemble the Ornament Blocks

Prep: Mark a diagonal line on the wrong side of twenty 1-1/2" Fabric A squares.

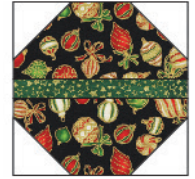
Step 27: Place a 1-1/2" Fabric A square in the upper left corner of a 2-1/4" x 4-1/2" Fabric M rectangle, right sides together. Note the orientation of the marked diagonal line. Sew on the marked line, then trim away the excess fabric, leaving a 1/4" seam allowance. Press.



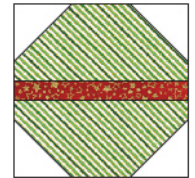
Repeat on the upper right corner with another 1-1/2" Fabric A square. Repeat to make six M/A units and four F/A units, noting the orientation of the stripe in the Fabric F piece.



Step 28: Sew a 1" x 4-1/2" Fabric C strip between two completed Step 27 units from Fabric M. Press. Repeat to make three like this.



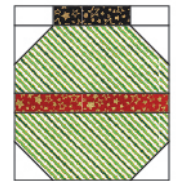
Repeat to make two units, using the Fabric F/A units and Fabric E strips.



Step 29: Sew a 1" x 1-1/2" Fabric A rectangle to both sides of the 1" x 2-1/2" Fabric G rectangles. Press.



Step 30: Sew a completed Step 29 unit to the top of each completed Step 28 unit. Press.



The resulting Ornament Block should measure 4-1/2" x 5". Repeat to make a total of five Star Blocks, three from Fabric M and two from Fabric F.

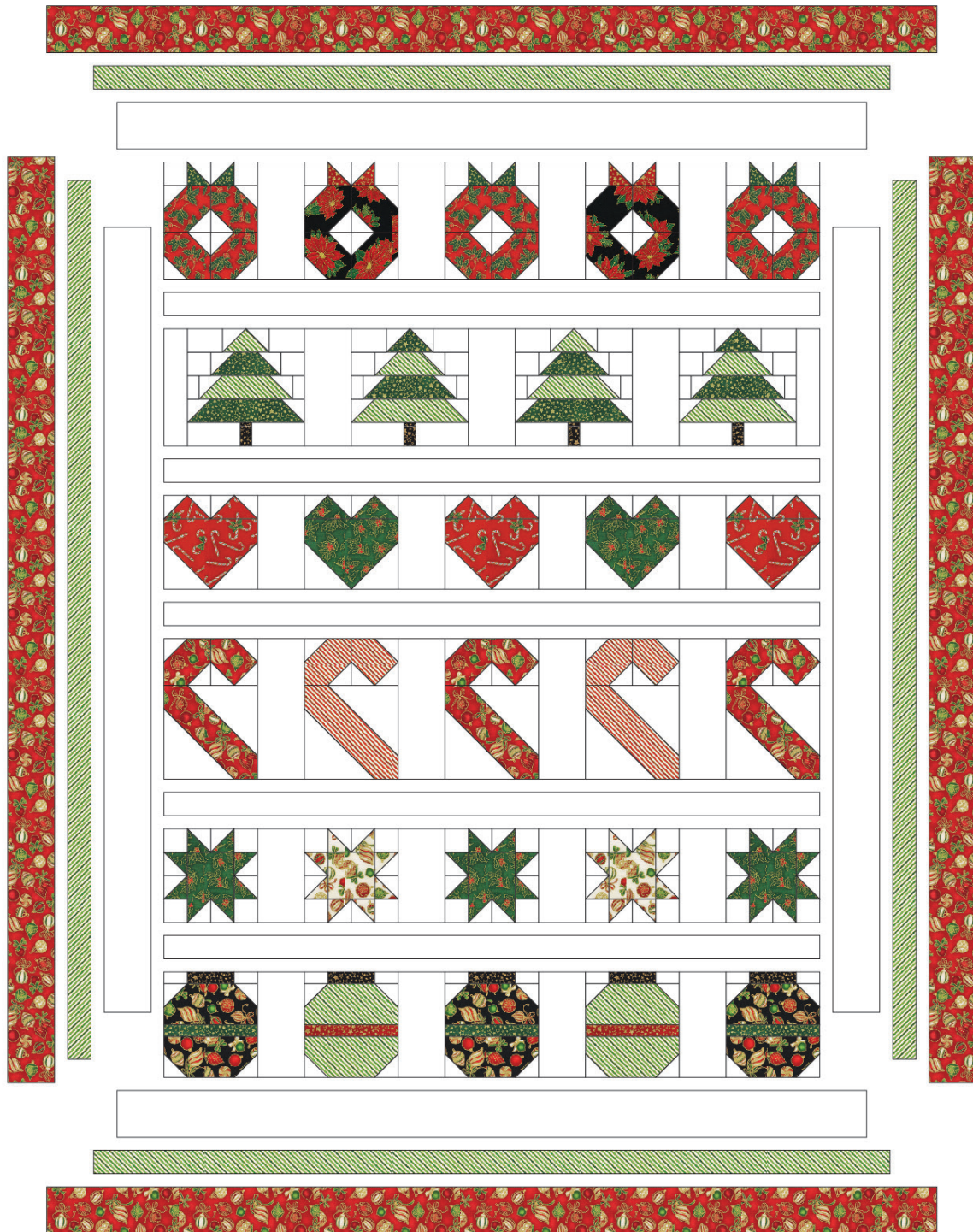
Sew five Star Blocks and four 2-1/2" x 5" Fabric A Ornament Block sashing pieces together to form the Ornament Row (Row 6). Press.



Assemble the Quilt

Step 31: Arrange the rows together as indicated in the Quilt Assembly Diagram. Sew each row together, using row sashing strips between each row. Press seams toward the sashing.

Step 32: Sew the side inner borders to the sides of the quilt center. Press toward the borders. Sew the top and bottom inner borders to the quilt center. Press toward the borders.



Step 33: Sew the side middle borders to the sides of the quilt center. Press toward the borders. Sew the top and bottom middle borders to the quilt center. Press toward the borders.

Step 34: Sew the side outer borders to the sides of the quilt center. Press toward the borders. Sew the top and bottom outer borders to the quilt center. Press toward the borders.

Your quilt top is complete! Baste, quilt, bind and enjoy!

This pattern may be used for personal purposes only and may not be reproduced in any form without the express permission from Robert Kaufman Fabrics. This pattern is not for resale. All patterns, unless otherwise attributed, are © Robert Kaufman Co., Inc. 2005-2021. All rights reserved.